

Sotheby's | Canada

INTERNATIONAL REALTY

MONIQUE BADUN | KIM CRAIG | VITO LONGO

#31-5650 Hampton Place,
Vancouver, B.C.

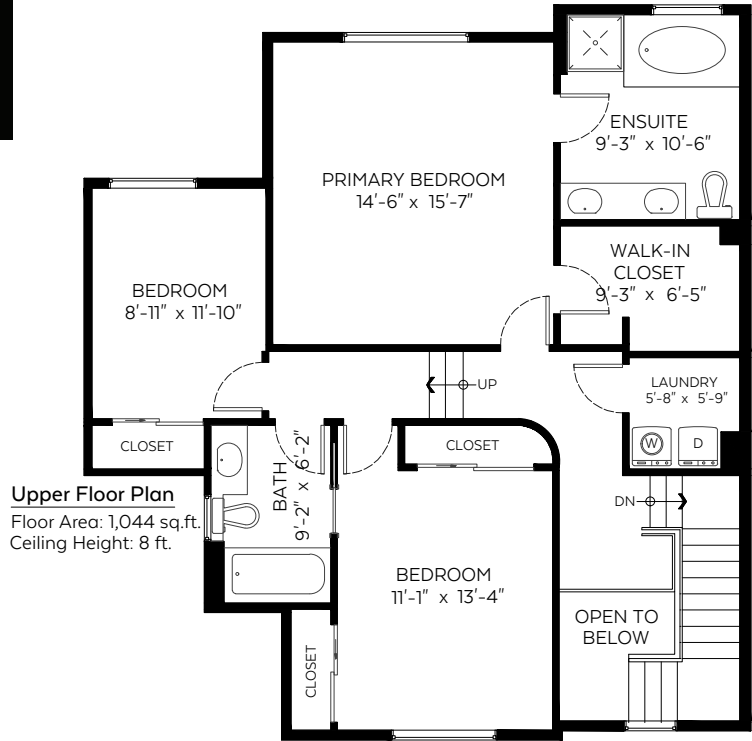
Main Floor: 1,111 sq.ft.
Upper Floor: 1,044 sq.ft.
Lower Floor: 1,111 sq.ft.

Total: 3,266 sq.ft.

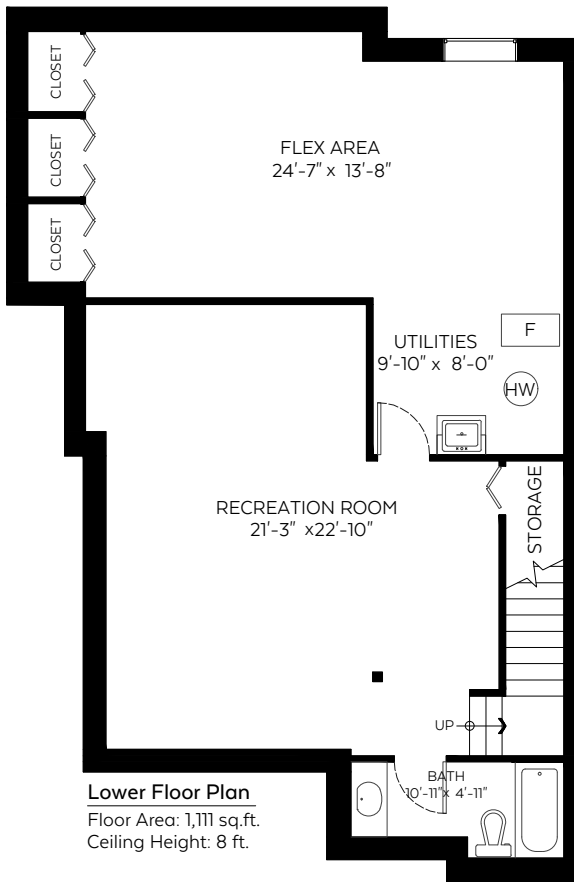
Open to Below: 33 sq.ft.

Auxiliary Area

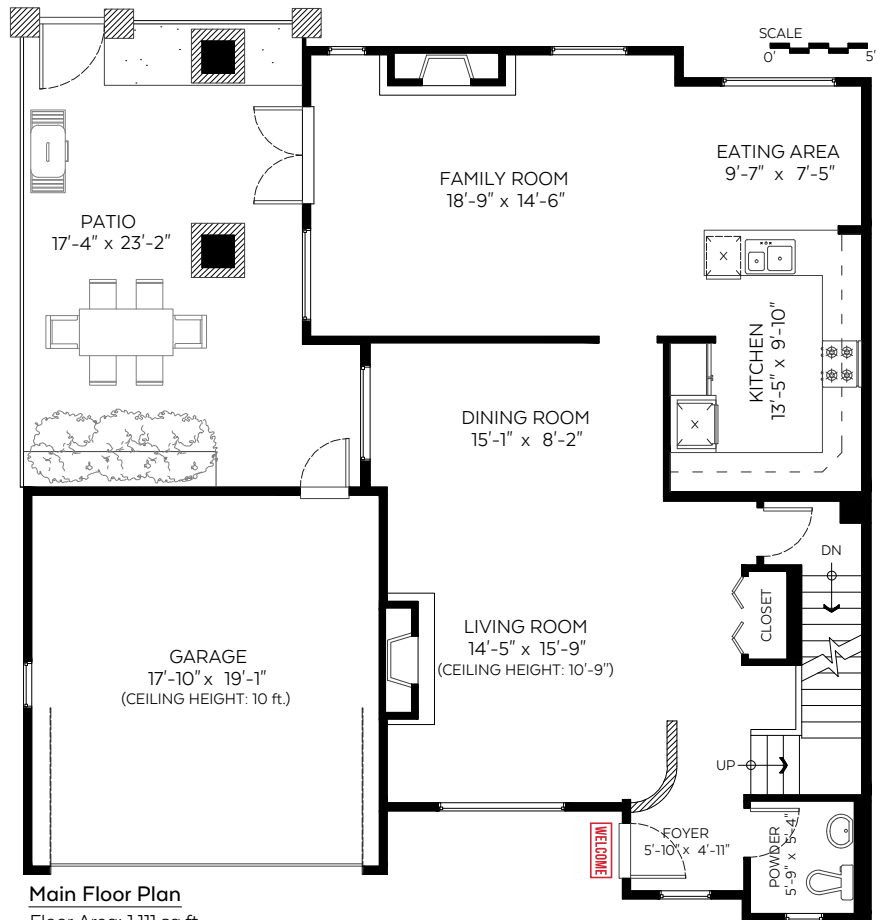
Garage: 365 sq.ft.
Patio: 310 sq.ft.



Upper Floor Plan
Floor Area: 1,044 sq.ft.
Ceiling Height: 8 ft.



Lower Floor Plan
Floor Area: 1,111 sq.ft.
Ceiling Height: 8 ft.



Main Floor Plan
Floor Area: 1,111 sq.ft.
Ceiling Height: 9.75 ft.

Valid Until: July 2, 2024

The floor plan is not suitable for architectural/construction and is covered under E&O. © Excelsior Measuring Inc. 2023. All rights reserved for Excelsior Measuring Inc. Users shall not publish and distribute such material (in whole or in part) and/or incorporate it in other works in any form.



NORTH