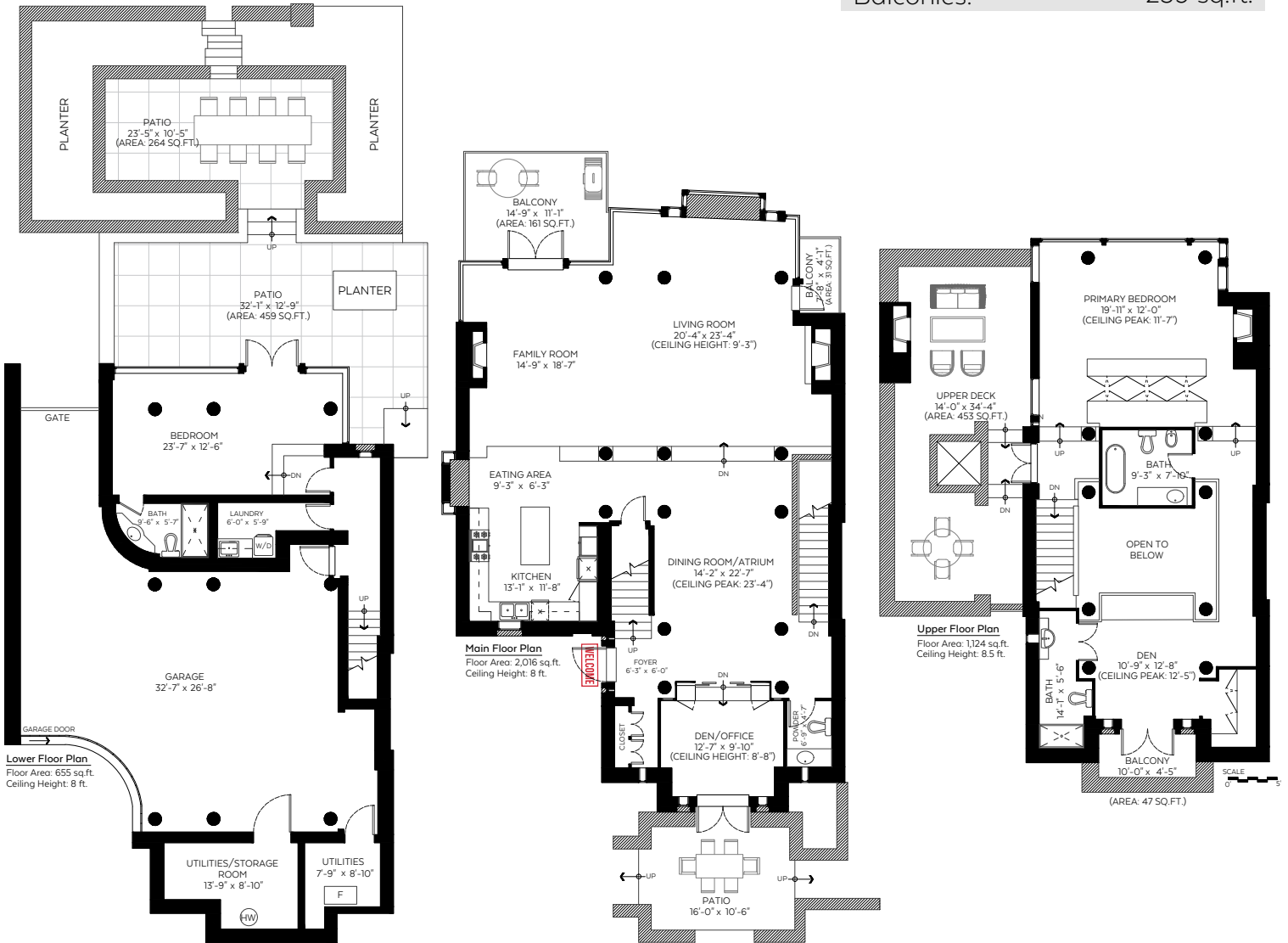


2505 Point Grey Road,
Vancouver, B.C.

Main Floor:	2,016 sq.ft.
Upper Floor:	1,124 sq.ft.
Lower Floor:	655 sq.ft.
Total:	3,795 sq.ft.
Open to Below:	147 sq.ft.

Auxiliary Area

Garage:	1,315 sq.ft.
Deck (Upper Floor):	453 sq.ft.
Patios (Lower Floor):	723 sq.ft.
Patio (Main Floor):	170 sq.ft.
Balconies:	239 sq.ft.



Valid Until: December 6, 2023

The floor plan is not suitable for architectural/construction and is covered under E&O. © Excelsior Measuring Inc. 2022. All rights reserved for Excelsior Measuring Inc. Users shall not publish and distribute such material (in whole or in part) and/or incorporate it in other works in any form.



NORTH