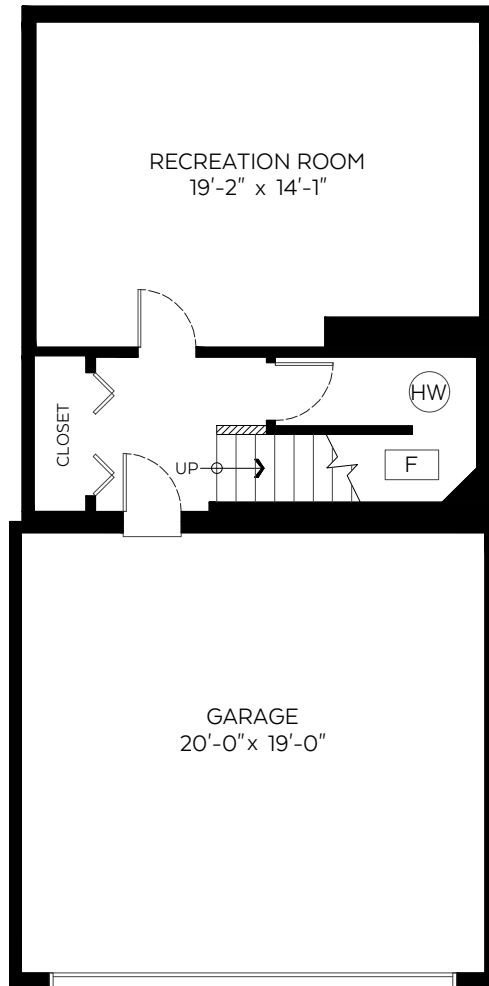


#9-5880 Hampton Place,
Vancouver, B.C.

Main Floor:	712 sq.ft.
Upper Floor:	658 sq.ft.
Lower Floor:	460 sq.ft.
Total:	1,830 sq.ft.

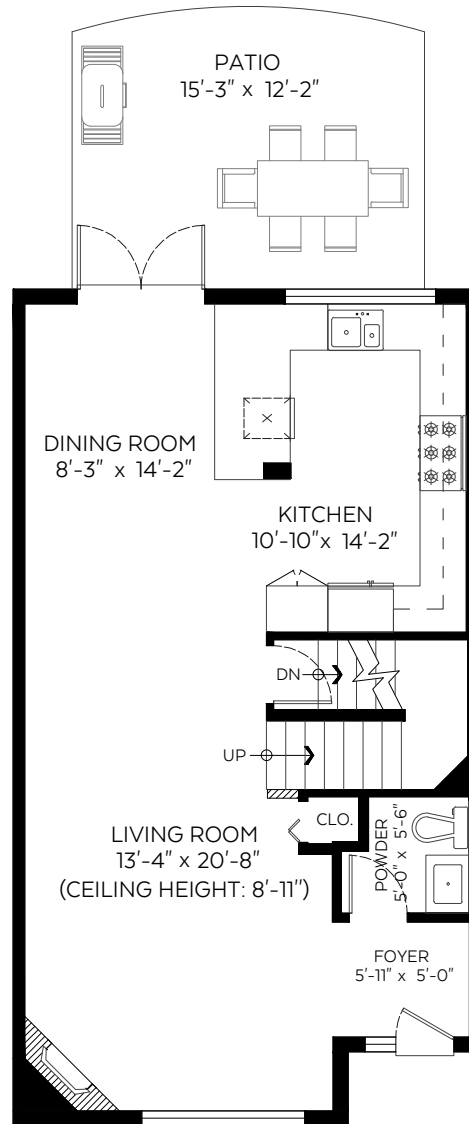
Auxiliary Area

Garage:	414 sq.ft.
Patio:	180 sq.ft.



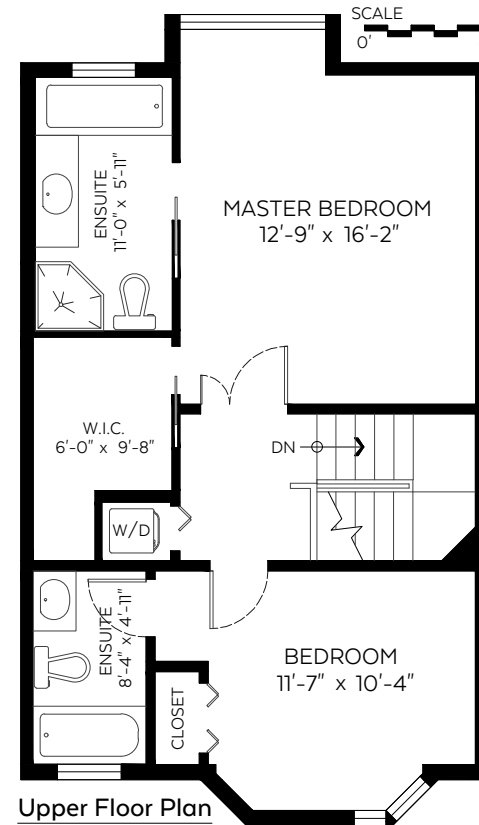
Lower Floor Plan

Floor Area: 460 sq.ft.
Ceiling Height: 8 ft.



Main Floor Plan

Floor Area: 712 sq.ft.
Ceiling Height: 8 ft.



Upper Floor Plan

Floor Area: 658 sq.ft.
Ceiling Height: 8 ft.



Valid Until: May 30, 2023

The floor plan is not suitable for architectural/construction and is covered under E&O. © Excelsior Measuring Inc. 2022. All rights reserved for Excelsior Measuring Inc. Users shall not publish and distribute such material (in whole or in part) and/or incorporate it in other works in any form.



NORTH