

Sotheby's | Canada

INTERNATIONAL REALTY

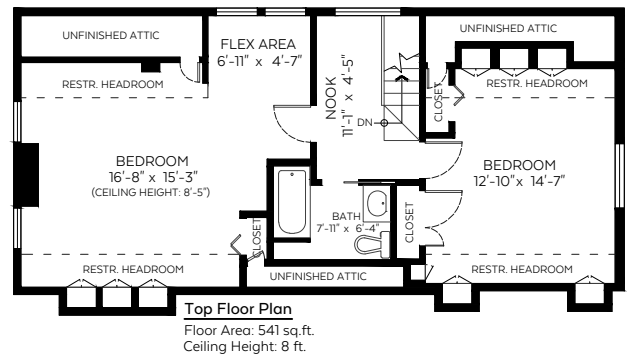
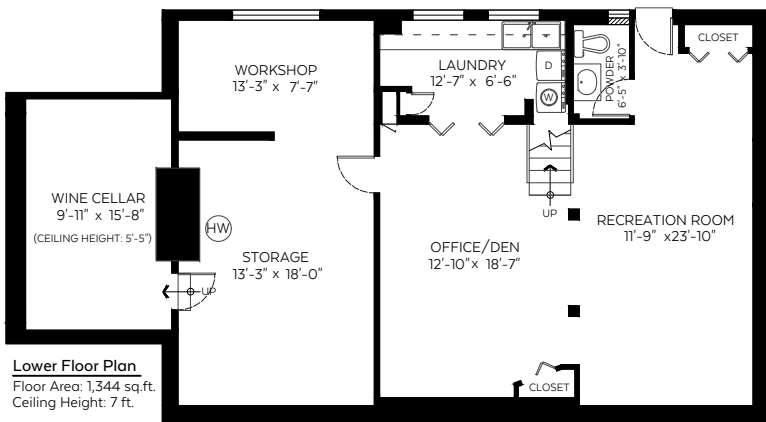
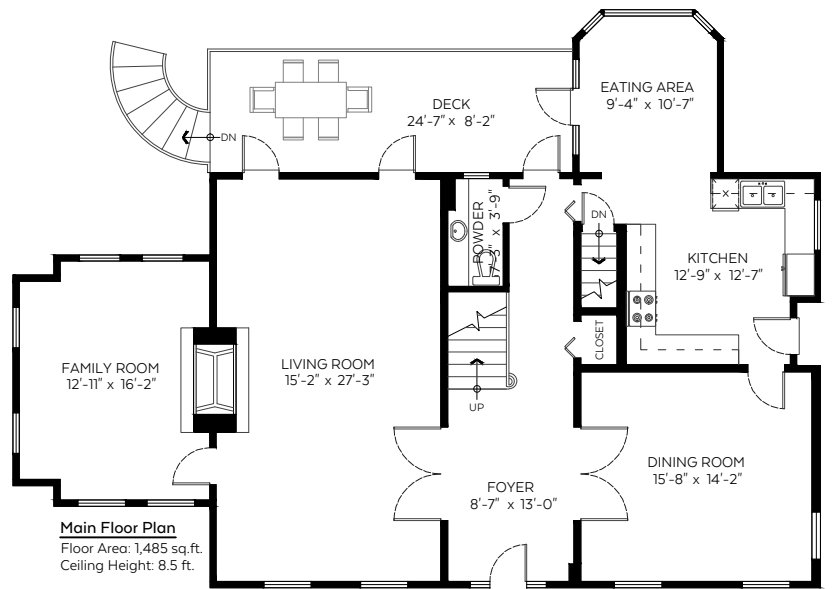
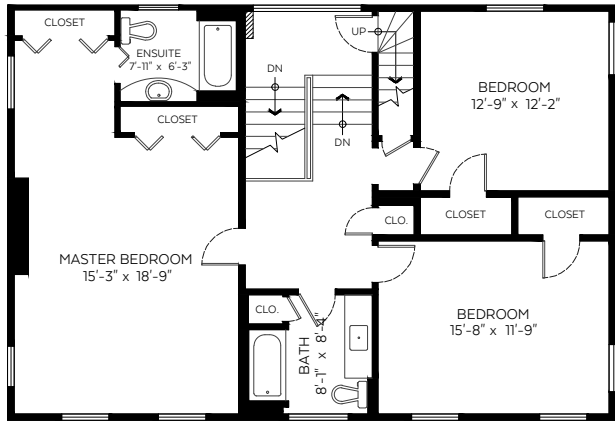
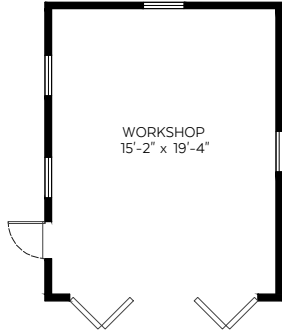
MONIQUE BADUN | KIM CRAIG | VITO LONGO

4675 Connaught Drive,
Vancouver, B.C.

| | |
|------------------|---------------------|
| Main Floor: | 1,485 sq.ft. |
| Upper Floor: | 1,164 sq.ft. |
| Top Floor: | 541 sq.ft. |
| Lower Floor: | 1,344 sq.ft. |
| Total: | 4,534 sq.ft. |
| Restr. Headroom: | 177 sq.ft. |

Auxiliary Area

| | |
|--------------|------------|
| Attic Space: | 101 sq.ft. |
| Deck: | 202 sq.ft. |
| Workshop: | 325 sq.ft. |



Valid Until: December 21, 2022

The floor plan is not suitable for architectural/construction and is covered under E&O. © Excelsior Measuring Inc. 2022. All rights reserved for Excelsior Measuring Inc. Users shall not publish and distribute such material (in whole or in part) and/or incorporate it in other works in any form.

