



ENGEL & VÖLKERS

MONIQUE BADUN | KIM CRAIG | VITO LONGO

3548 W 12th Avenue,
Vancouver, B.C.

Main Floor:	829 sq.ft.
Upper Floor:	645 sq.ft.
Lower Floor:	774 sq.ft.
Total:	2,248 sq.ft.

R.H.R.: 63 sq.ft.

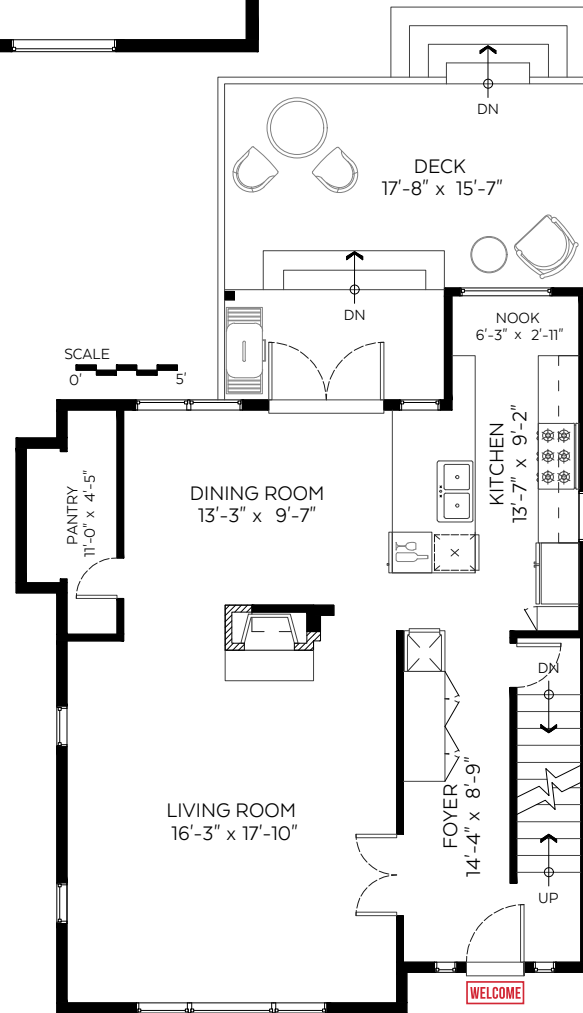
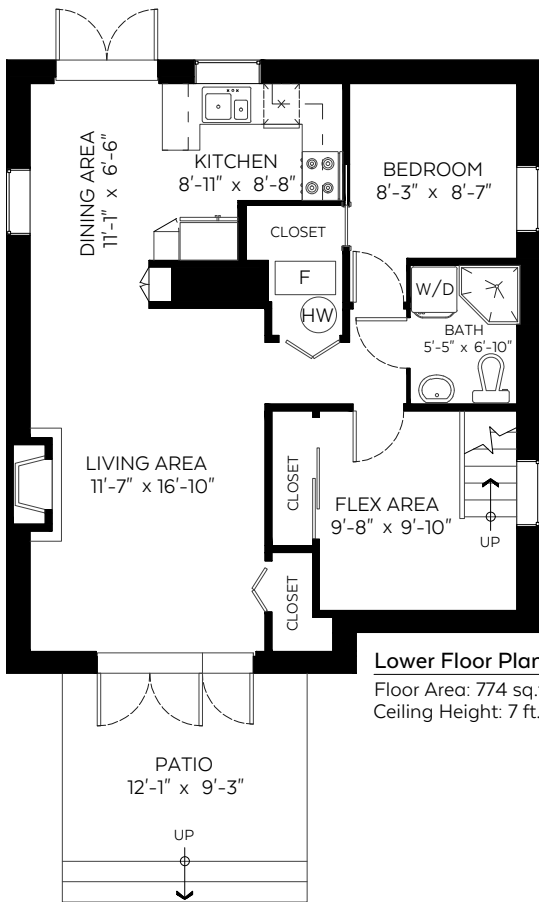
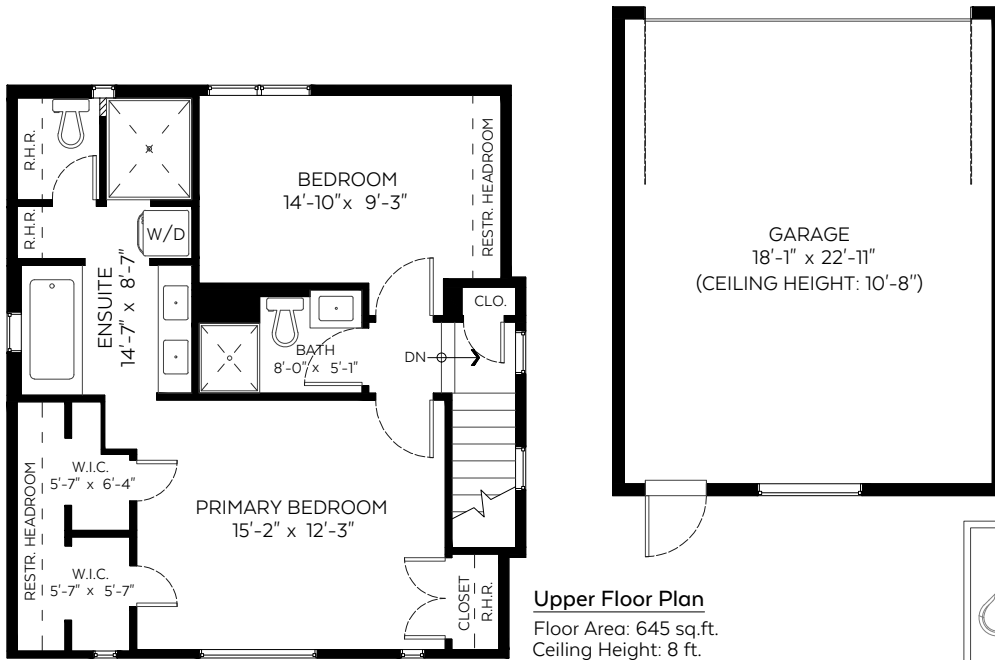
Grand Total: 2,311 sq.ft.

Auxiliary Area

Garage: 463 sq.ft.

Patio: 111 sq.ft.

Deck: 237 sq.ft.



Valid Until: February 7, 2025

The floor plan is not suitable for architectural/construction and is covered under E.O. © Excelsior Measuring Inc. 2024. All rights reserved for Excelsior Measuring Inc. Users shall not publish and distribute such material (in whole or in part) and/or incorporate it in other works in any form.



NORTH