

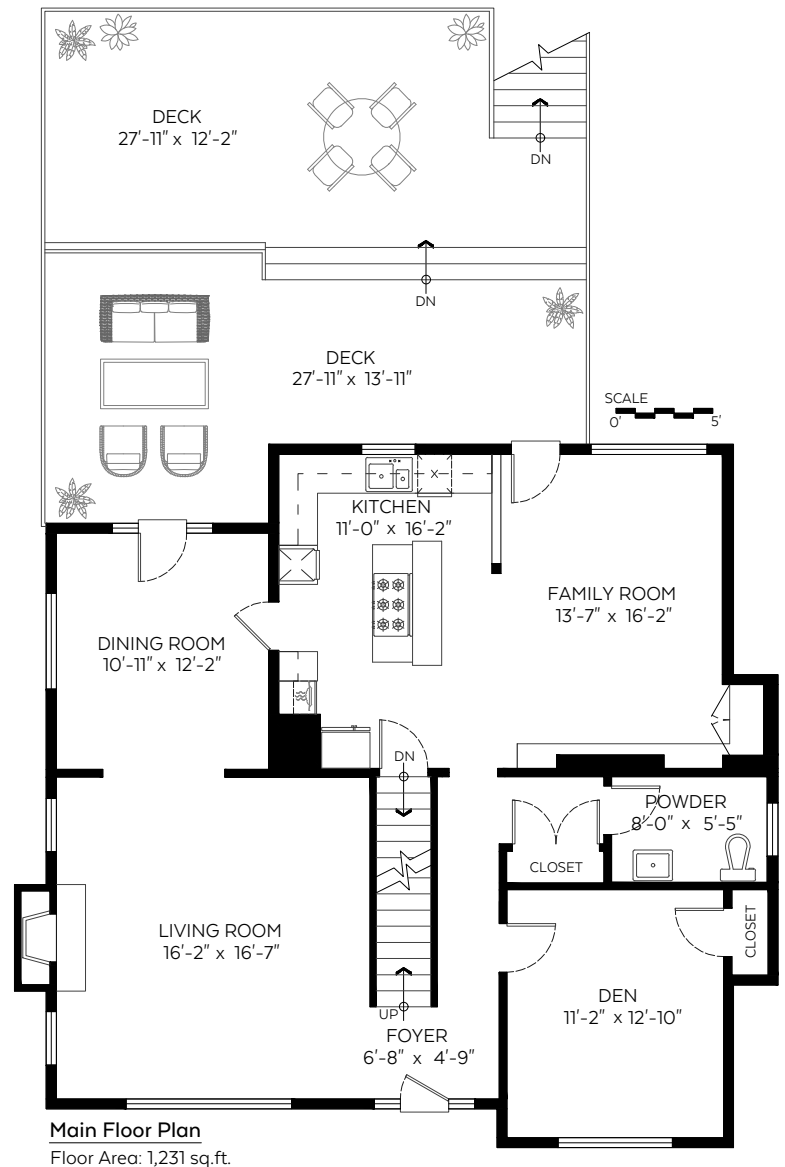
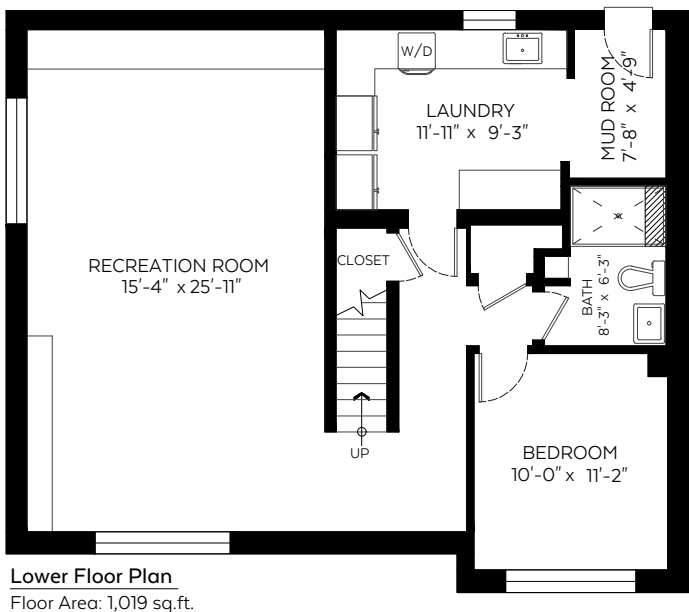
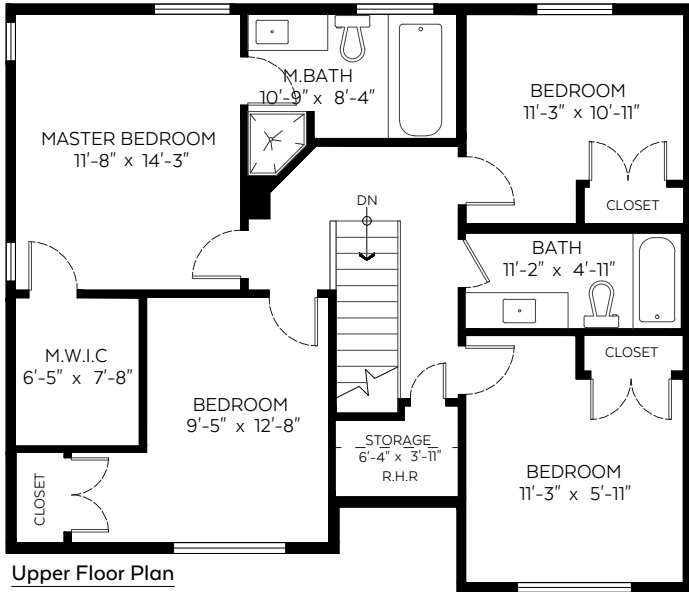
5611 Elm Street,
Vancouver, B.C.

Main Floor:	1,231 sq.ft.
Upper Floor:*	1,016 sq.ft.
Lower Floor:	1,019 sq.ft.
Total:	3,266 sq.ft.

Auxiliary Area

Deck:	639 sq.ft.
-------	------------

*RESTRICTED HEADROOM INCLUDED



Measured on: March 11, 2020

The floor plan is not suitable for architectural/construction and is covered under E&O. © Excelsior Measuring Inc. 2020. All rights reserved for Excelsior Measuring Inc. Users shall not publish and distribute such material (in whole or in part) and/or incorporate it in other works in any form.

