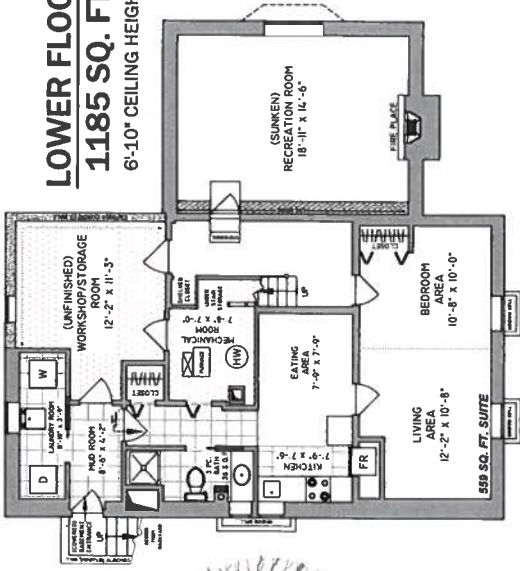
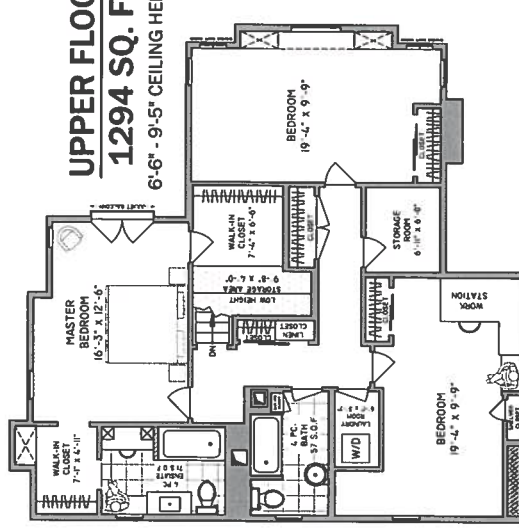


LOWER FLOOR
1185 SQ. FT.
6'-10" CEILING HEIGHT



UPPER FLOOR
1294 SQ. FT.
6'-6" - 9'-5" CEILING HEIGHTS



5844 OLYMPIC STREET, VANCOUVER

FLOOR	FINISHED	WORKSHOP	DET. SUITE	GARAGE	DECK/PATIO
MAIN	1307	-	256	227	895
UPPER	1294	-	-	-	-
LOWER	1185	165	-	-	-
TOTAL	3786	165	256	227	895



MAIN FLOOR
1307 SQ. FT.
8'-4" - 9'-2" CEILING HEIGHTS

