

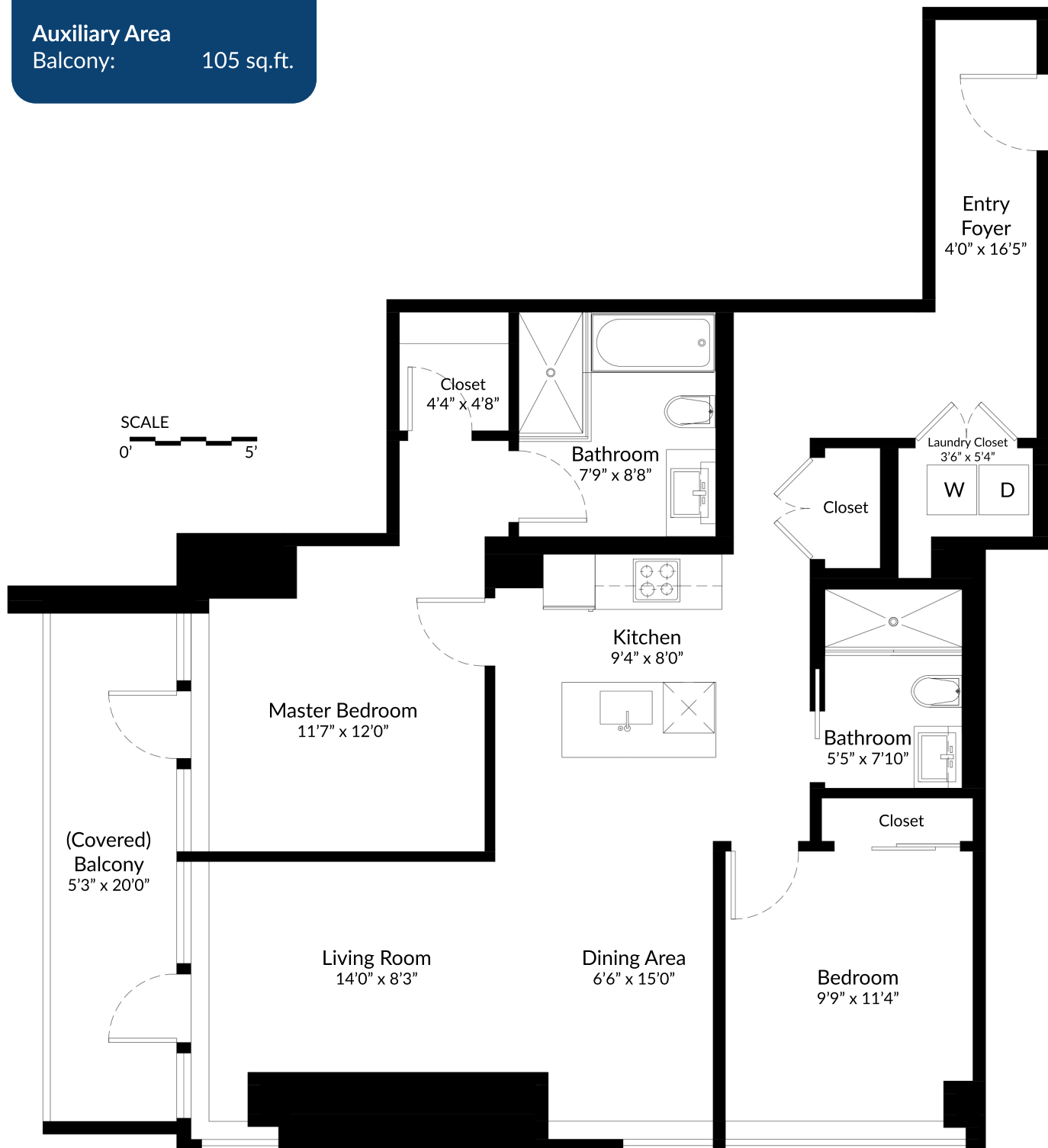
#4508 - 1480 Howe Street,
Vancouver, B.C.

Sotheby's | Canada
INTERNATIONAL REALTY

MONIQUE BADUN | KIM CRAIG | VITO LONGO

Main Area: 1,059 sq.ft.
Ceiling Height: 8'0" - 9'0"

Auxiliary Area
Balcony: 105 sq.ft.



ALL IN ONE
PRODUCTIONS

The floor plan is not suitable for architectural/construction purposes and is covered under E&O. © All in One Productions Incorporated 2020.
Users shall not publish and distribute such material (in whole or in part) and/or incorporate it in other works of any form.



NORTH