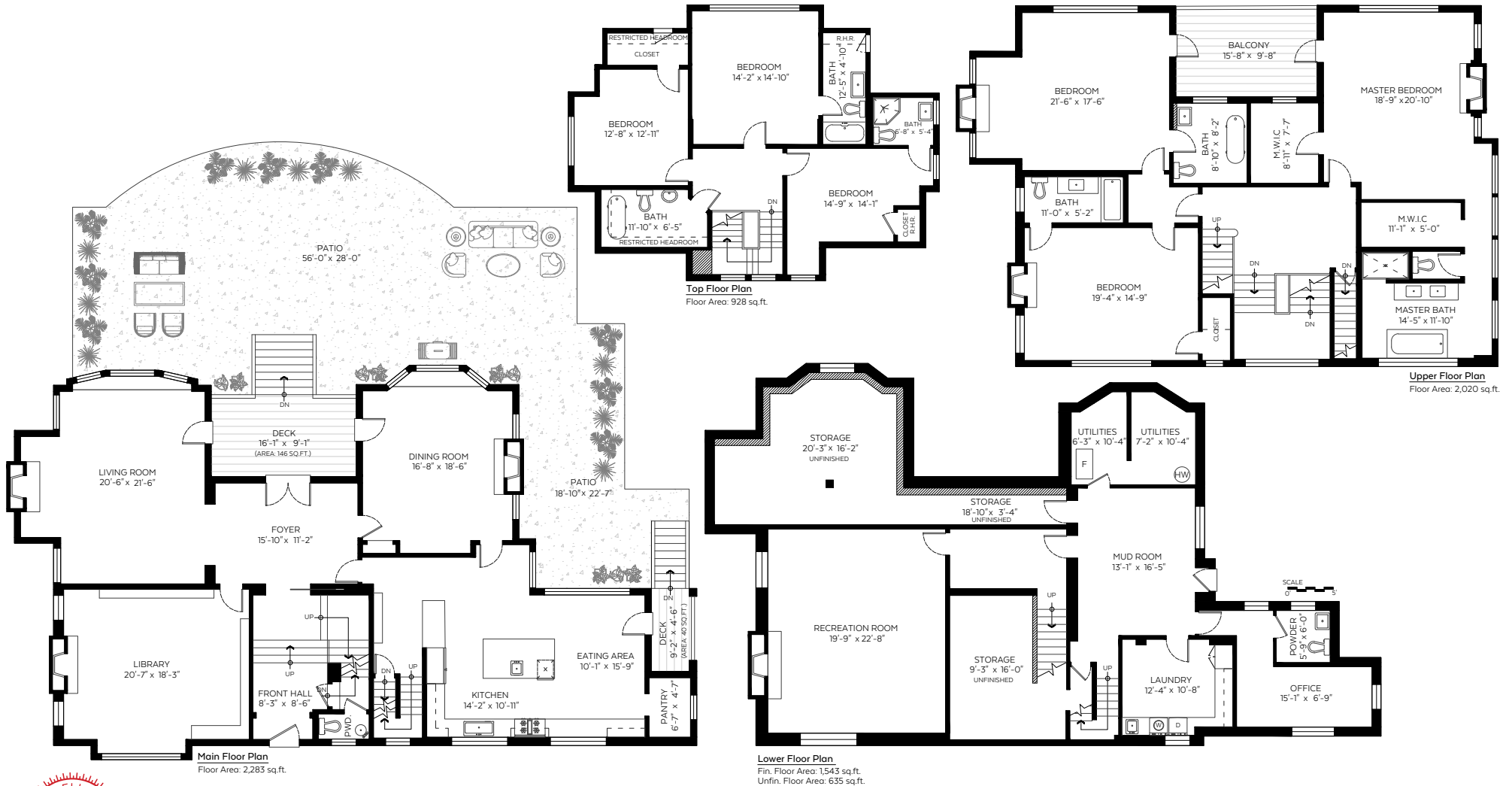


Main Floor: 2,283 sq.ft.
Upper Floor: 2,020 sq.ft.
Top Floor: 928 sq.ft.
Fin. Lower Floor: 1,543 sq.ft.

Total: 6,774 sq.ft.
Unfin. Lower Floor: 635 sq.ft.
Grand Total: 7,409 sq.ft.
Restricted H.R.: 69 sq.ft.

Auxiliary Area

Patio: 1,650 sq.ft.
Decks: 186 sq.ft.
Balcony: 152 sq.ft.



Measured on: Oct. 26, 2018

The floor plan is not suitable for architectural/construction and is covered under E&O. © Excelsior Measuring Inc. 2018. All rights reserved for Excelsior Measuring Inc. Users shall not publish and distribute such material (in whole or in part) and/or incorporate it in other works in any form.

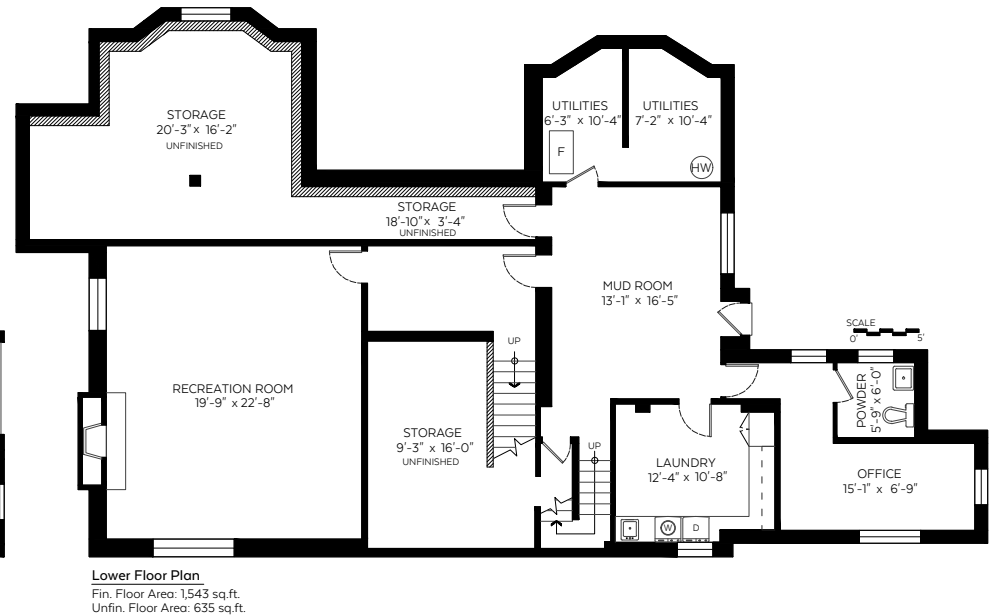
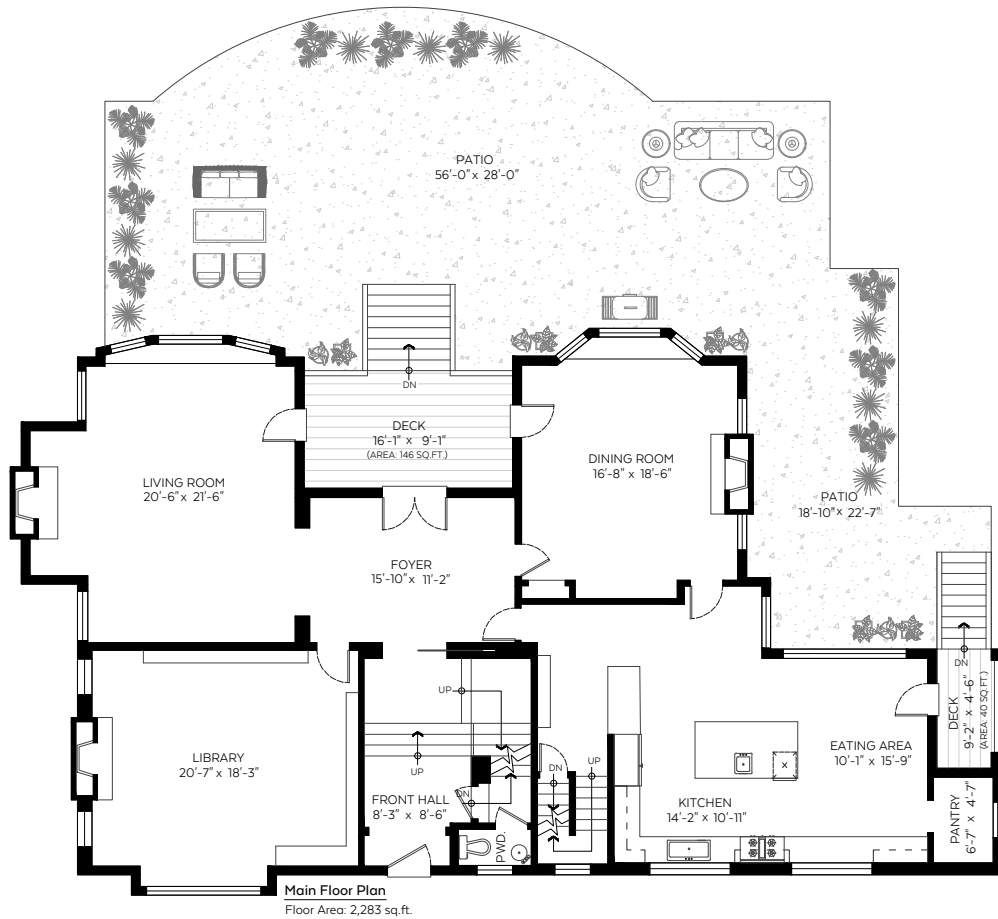


3369 The Crescent,
Vancouver, B.C.

Main Floor: 2,283 sq.ft.
Fin. Lower Floor: 1,543 sq.ft.
Unfin. Lower Floor: 635 sq.ft.

Auxiliary Area

Patio: 1,650 sq.ft.
Decks: 186 sq.ft.



Measured on: Oct. 26, 2018

The floor plan is not suitable for architectural/construction and is covered under E&O. © Excelsior Measuring Inc. 2018. All rights reserved for Excelsior Measuring Inc. Users shall not publish and distribute such material (in whole or in part) and/or incorporate it in other works in any form.



3369 The Crescent,
Vancouver, B.C.

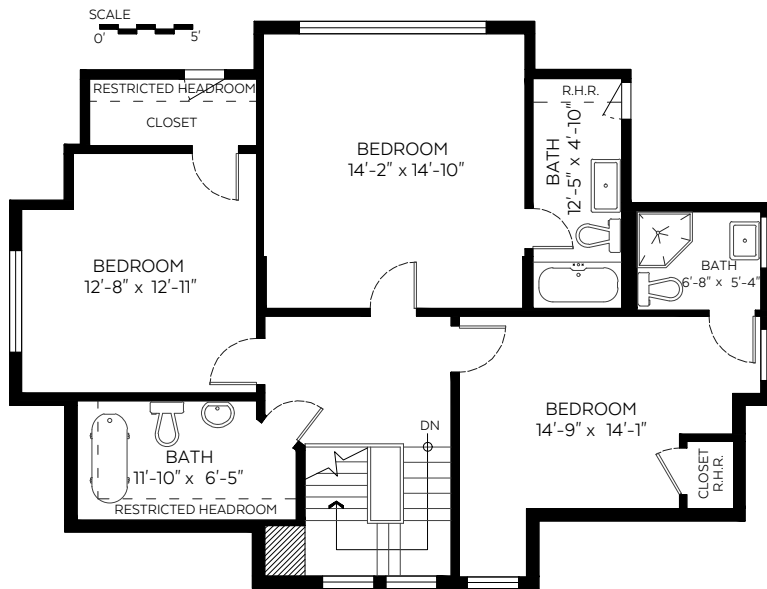
Upper Floor: 2,020 sq.ft.

Top Floor: 928 sq.ft.

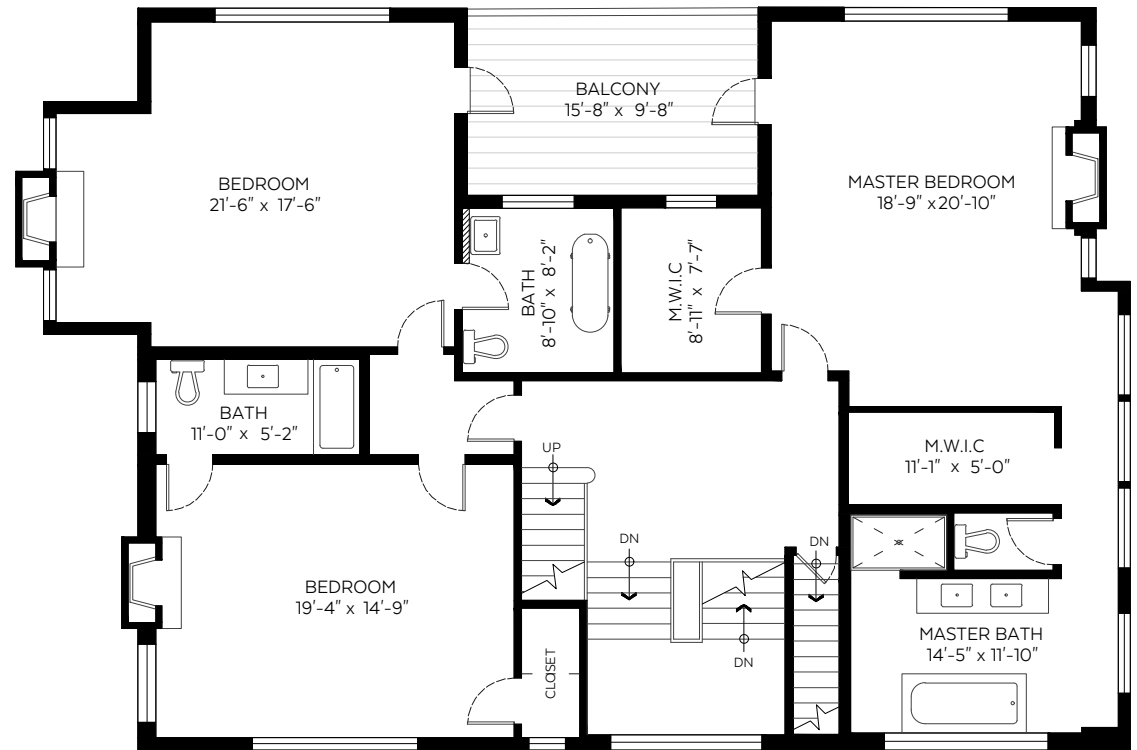
Restricted H.R.: 69 sq.ft.

Auxiliary Area

Balcony: 152 sq.ft.



Top Floor Plan
Floor Area: 928 sq.ft.



Upper Floor Plan
Floor Area: 2,020 sq.ft.



Measured on: Oct. 26, 2018

The floor plan is not suitable for architectural/construction and is covered under E&O. © Excelsior Measuring Inc. 2018. All rights reserved for Excelsior Measuring Inc. Users shall not publish and distribute such material (in whole or in part) and/or incorporate it in other works in any form.



NORTH

*Colleen Burke
Photography*