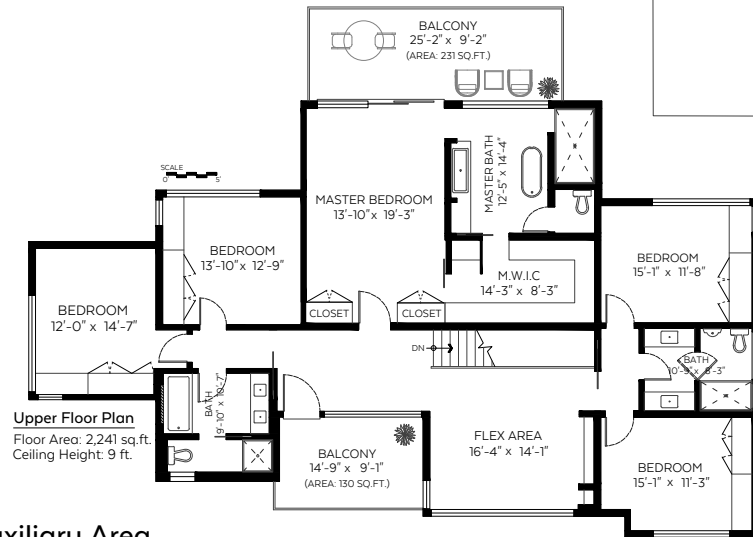
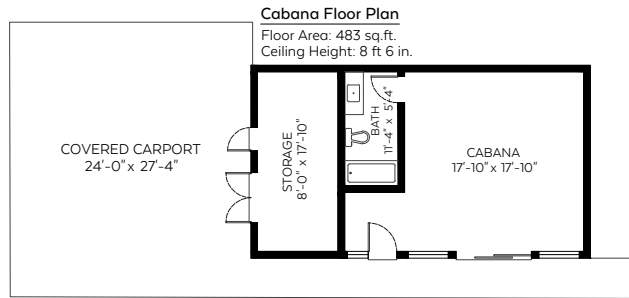
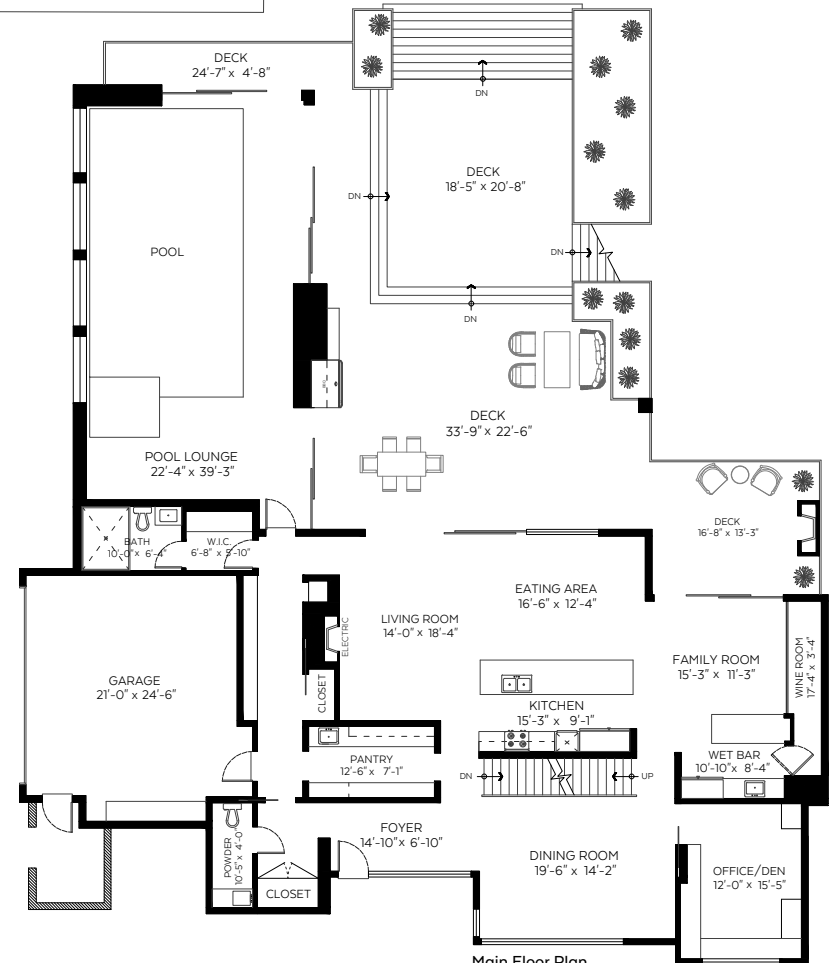
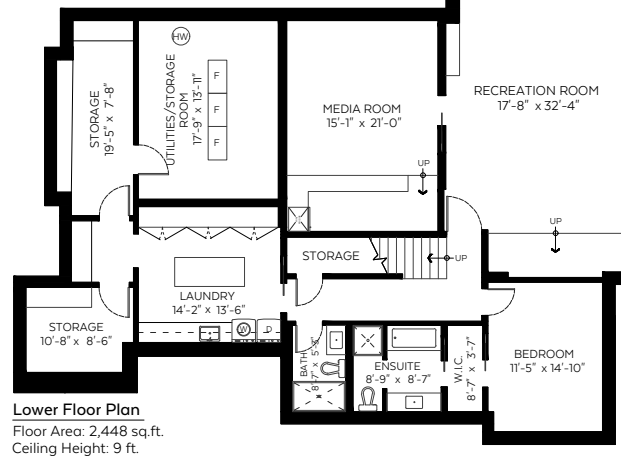


Main Floor:	2,349 sq.ft.
Upper Floor:	2,241 sq.ft.
Lower Floor:	2,448 sq.ft.
<b>Total:</b>	<b>7,038 sq.ft.</b>
Pool Lounge:	999 sq.ft.
Cabana:	483 sq.ft.
<b>Grand Total:</b>	<b>8,520 sq.ft.</b>



**Auxiliary Area**

Garage:	535 sq.ft.
Deck:	1,601 sq.ft.
Balconies:	361 sq.ft.
Storage:	166 sq.ft.
Covered Carport:	658 sq.ft.



Valid Until: February 07, 2022

The floor plan is not suitable for architectural/construction and is covered under E&O. © Excelsior Measuring Inc. 2021. All rights reserved for Excelsior Measuring Inc. Users shall not publish and distribute such material (in whole or in part) and/or incorporate it in other works in any form.



**NORTH**