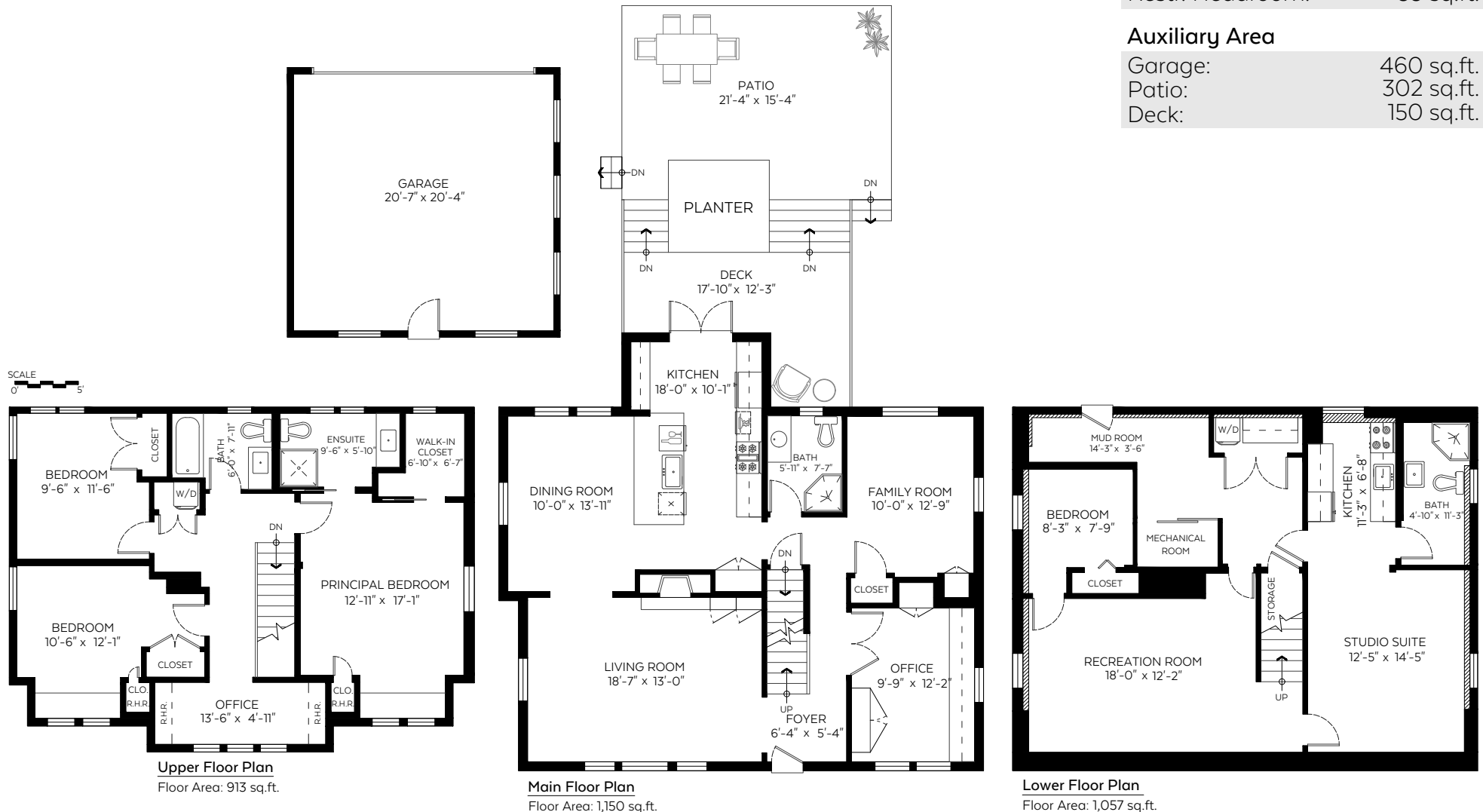


2365 West 15th Avenue,  
Vancouver, B.C.

Main Floor:	1,150 sq.ft.
Upper Floor:	913 sq.ft.
Lower Floor:	1,057 sq.ft.
<b>Total:</b>	<b>3,120 sq.ft.</b>
Restr. Headroom:	33 sq.ft.

### Auxiliary Area

Garage:	460 sq.ft.
Patio:	302 sq.ft.
Deck:	150 sq.ft.



Valid Until: January 04, 2023

The floor plan is not suitable for architectural/construction and is covered under E&O. © Excelsior Measuring Inc. 2022. All rights reserved for Excelsior Measuring Inc. Users shall not publish and distribute such material (in whole or in part) and/or incorporate it in other works in any form.



**NORTH**