

1850 Whyte Avenue,  
Vancouver, B.C.

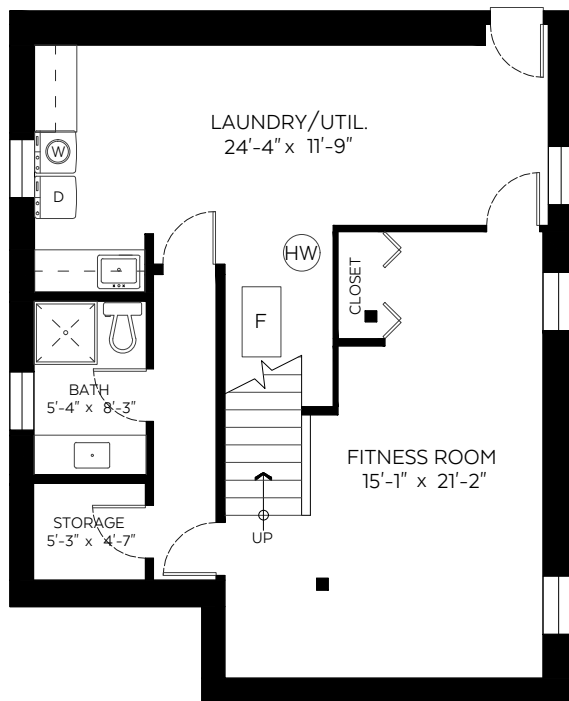
Main Floor: 864 sq.ft.  
Upper Floor: 509 sq.ft.  
Lower Floor: 833 sq.ft.

**Total: 2,206 sq.ft.**

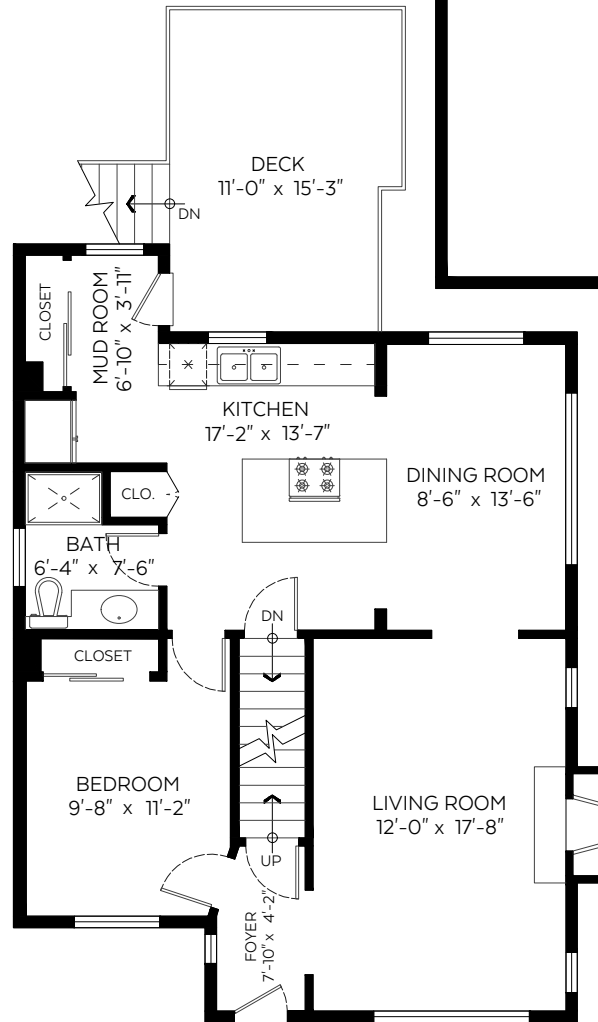
Restricted H.R.: 56 sq.ft.

**Auxiliary Area**

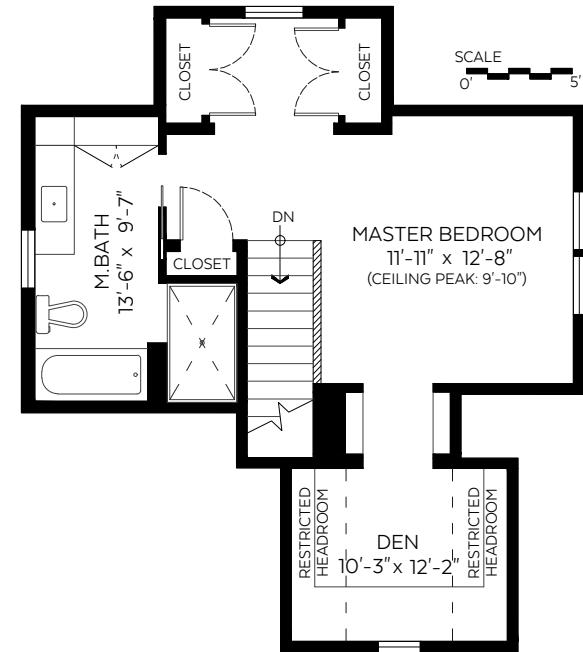
Garage: 431 sq.ft.  
Deck: 160 sq.ft.



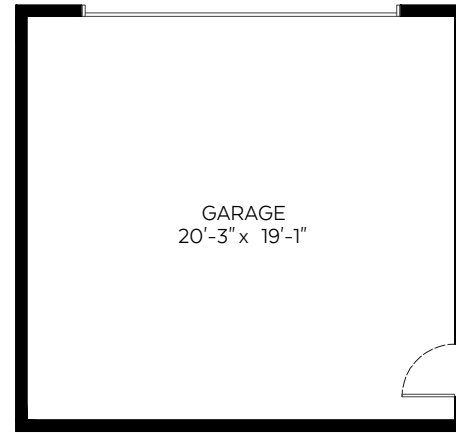
**Lower Floor Plan**  
Floor Area: 833 sq.ft.



**Main Floor Plan**  
Floor Area: 864 sq.ft.



**Upper Floor Plan**  
Floor Area: 509 sq.ft.



Measured on: August 26, 2020

The floor plan is not suitable for architectural/construction and is covered under E&O. © Excelsior Measuring Inc. 2020. All rights reserved for Excelsior Measuring Inc. Users shall not publish and distribute such material (in whole or in part) and/or incorporate it in other works in any form.



**NORTH**