

The background is a repeating pattern of light green botanical illustrations. It includes various types of ferns, some with long, feathery fronds and others with more compact, rounded shapes. There are also clusters of small, round berries or seeds on thin stems, and some larger, fan-shaped floral or seed structures. The overall style is that of a classic botanical field guide or scientific illustration.

WYNWOOD GREEN

ADVANCE PREVIEW PACKAGE

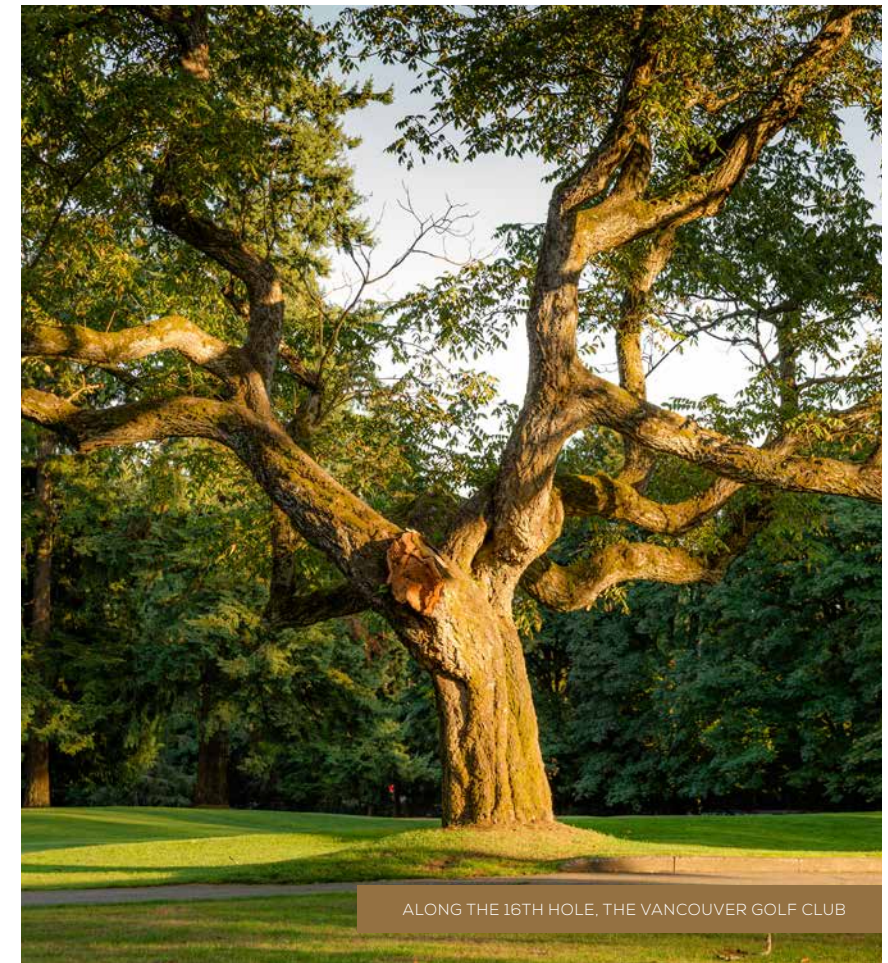
A graceful ascension above the
tranquil trees and greenery of West Coquitlam.
Introducing Wynwood Green by Anthem.
Naturally parkside.



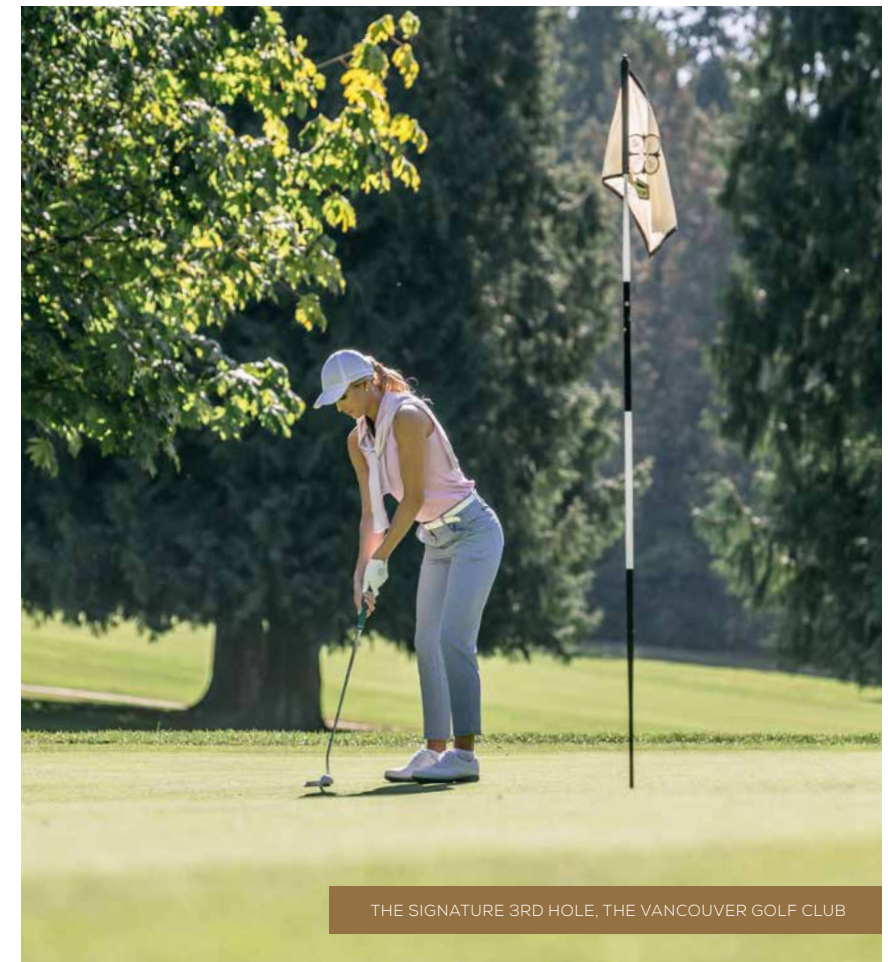


Artistic rendering only.

VIEW OF WYNWOOD GREEN FROM THE 6TH HOLE, THE VANCOUVER GOLF CLUB



ALONG THE 16TH HOLE, THE VANCOUVER GOLF CLUB



THE SIGNATURE 3RD HOLE, THE VANCOUVER GOLF CLUB



IN ALL THINGS OF NATURE THERE IS SOMETHING OF THE MARVELOUS

- ARISTOTLE -



A DISTINGUISHED ARRIVAL

Artist rendering only.



Through a parting in the trees, find your way to a welcoming entrance defined by an impressive open-air arrival courtyard. Thoughtfully designed by IBI Architects, the timeless philosophy of mid-century modern architecture is reimagined at Wynwood Green, inviting nature to integrate with design.

Step into your double-height lobby, evocative of a luxury hotel, with a grand fireplace and an intimate lounge strengthening the sense of sophistication. A 24-hour concierge is in place to greet you and guests, and to extend convenient assistance.



A COVETED BACKYARD

1
NORTH TOWER: 595 AUSTIN
 205 homes span 28 storeys, and extend off the manicured grounds of The Vancouver Golf Club.

2
SOUTH TOWER: 585 AUSTIN
 174 homes span 23 storeys nestled between Brookmere Park and The Vancouver Golf Club.

3
WYNWOOD GREEN PAVILION
 The enclosed amenities spill outdoors, offering over 4,500 sq. ft. of amenity facilities, and bridging the space between the two towers.

4
BROOKMERE PARK
 Expansive lawns with playing field and ball diamond.

5
BROOKMERE TRAIL
 Explore a picturesque trail under a canopy of branches.

6
THE VANCOUVER GOLF CLUB
 One of the most prestigious private golf clubs in British Columbia, with the legendary 605-yard Hole 6.

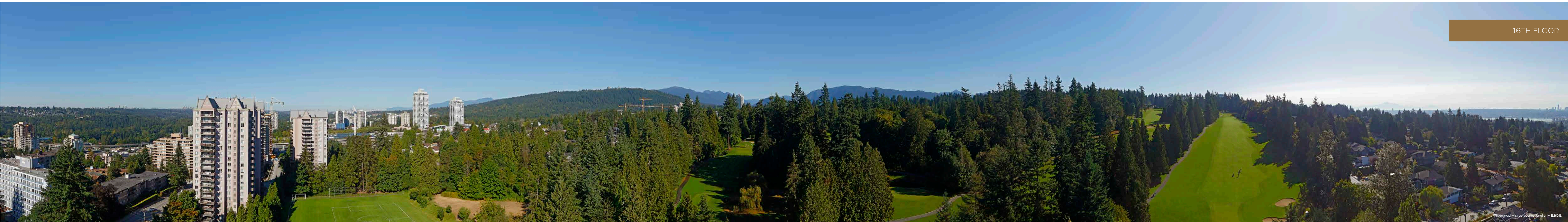
7
LOUGHEED TOWN CENTRE
 The new urban heart of Burnaby, with a selection of shops and services, and a SkyTrain station just minutes away.

8
AUSTIN AVENUE
 A well-connected transportation network is easily accessible.

28TH FLOOR



16TH FLOOR



SW

W

NW

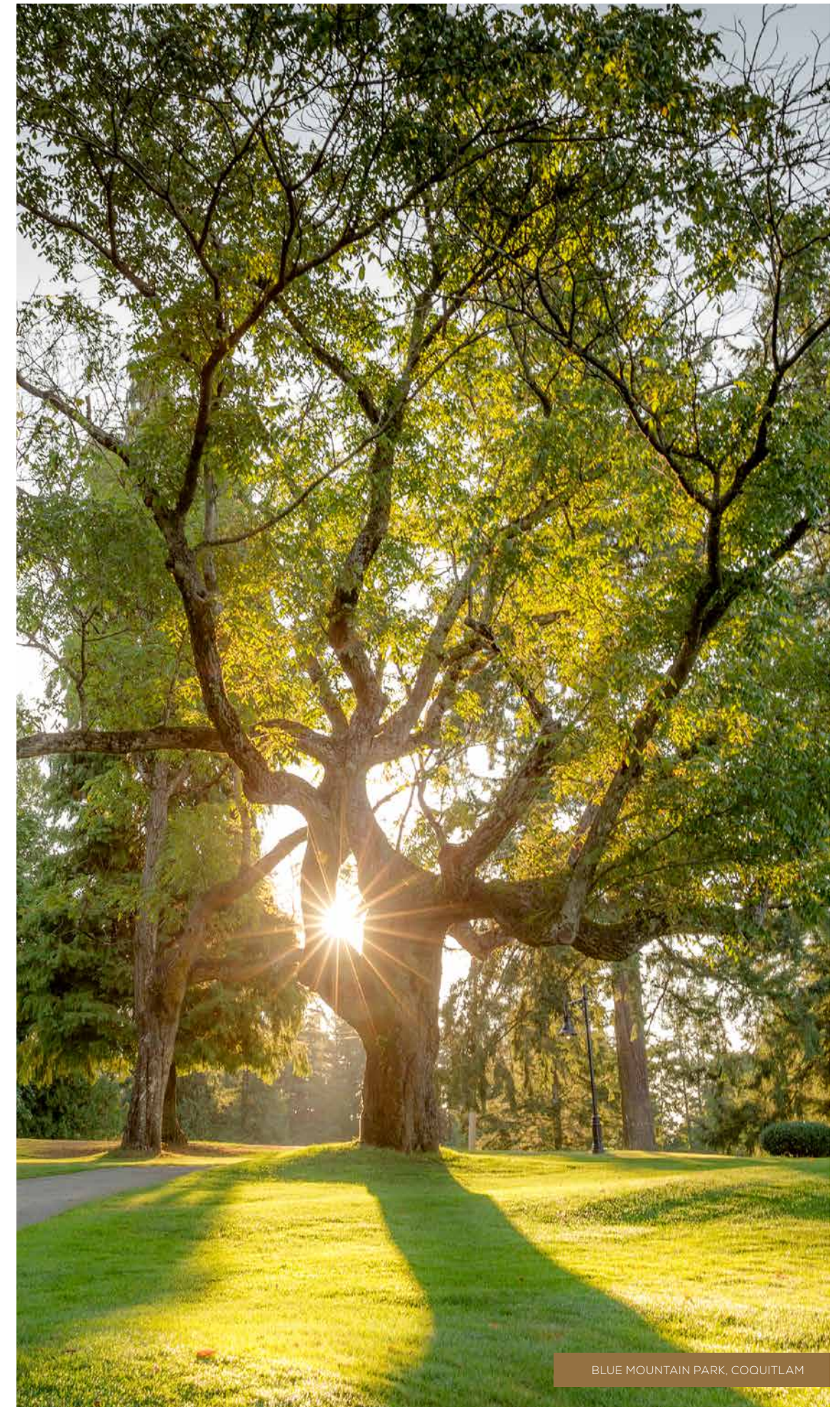
N

NE

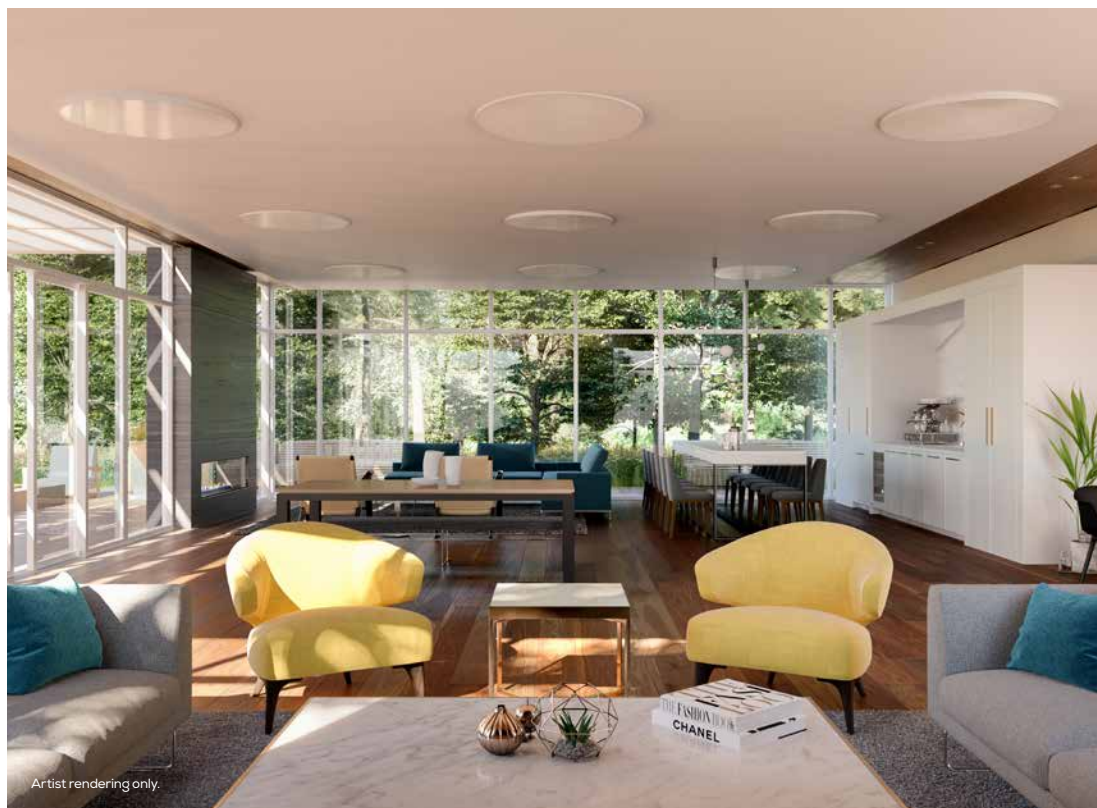
E



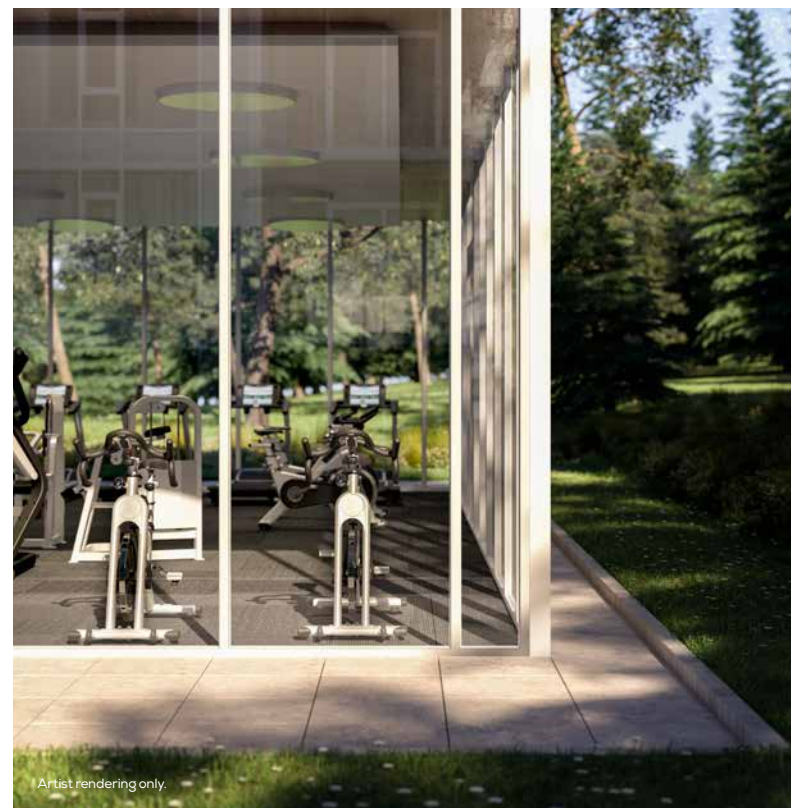
Artist rendering only.



BLUE MOUNTAIN PARK, COQUITLAM



Artist rendering only.



Artist rendering only.

FEATURES AND FINISHES



THE RARE BALANCE OF PURPOSE AND TRANQUILITY

DISTINGUISHED ARRIVAL

- A timeless design by award-winning IBI Architects, the two towers of Wynwood Green are influenced by mid-century modern style
- White and charcoal façades, deep overhangs, gracious balconies, and continuous canopies contribute to a contemporary interpretation of West Coast architecture
- At 23 and 28 storeys high, the towers offer mountain, city, and golf course views
- The immaculate and historic lawns of The Vancouver Golf Club spill into lush community landscaping with an assortment of mature, tall trees and native plantings
- Memorable extras to the landscaped exteriors include a mini putting green, thoughtful seating, well-lit walking paths perfect for your dogs, and a children's play area
- Open-air arrival courtyard with paving stones and drop-off/loading zones is a welcoming sight
- Expansive, hotel-inspired lobbies are accented with exterior water features and anchored with a fireplace and lounge seating

TIMELESS INTERIORS

- Heating and air conditioning with individual climate controls for your comfort
- Large floor plans with generous balconies offer idyllic outdoor living with stunning views
- Two designer colour schemes, Oak and Walnut, curated by award-winning BBA Design Consultants
- Wide-plank laminate wood flooring flows throughout living, dining, kitchen, and bedroom areas
- Tailored storage options, including integrated millwork closet systems, maintain organization
- Over-height ceilings up to an airy nine feet
- Roller blinds throughout for additional privacy and control of natural light
- Stacked, full-size, front-loading washer/dryer
- USB outlets for convenient charging
- Sturdy chrome door hardware

ENVIABLE AMENITIES

- Double-height lobbies, with 24-hour concierge service in 585 Austin to elegantly greet you and conveniently assist you
- Collection of exclusive resident amenities in the 4,500 sq. ft. Wynwood Green Pavilion
 - A separate mid-century modern building nestled within lush landscaping
 - Attractive common dining, lounge, and catering kitchen to socialize with friends
 - Indoor/outdoor fireplace with expansive courtyard and grilling station encourages al fresco dining
 - Modern fitness facility with adjacent yoga/meditation area for honing body and mind
 - Infrared sauna and change rooms
- Fully furnished, stylishly appointed guest accommodations with kitchenette and bathroom
- Dog wash, car wash, and bike repair stations facilitate everyday living
- Tool/workshop hobby room with workbench
- Convenient storage lockers

BATHROOM INDULGENCE

- Generous vanity with solid quartz counters
- Medicine cabinets and open shelving offer a mixture of thoughtful storage options
- Frameless glass-enclosed walk-in shower and soothing soaker tub (select homes)
- Shower niche keeps toiletries organized and close at hand
- Spotless porcelain tile flooring
- Polished chrome fixtures
- Low-flow toilets with comfort-height elongated seat, soft-close lid, and dual-flush features

GOURMET STYLE

- Luxurious solid quartz waterfall countertops and full-height porcelain backsplash
- BOSCH integrated appliance package:
 - Gas cooktop
 - Electric wall oven
 - Dishwasher with stainless steel interior
 - Refrigerator with bottom-mount freezer
 - Hood fan
- Stainless steel Panasonic microwave
- Custom storage solutions, including full-height, pull-out pantry, open display cabinetry, and extra storage in peninsula island (select homes)
- Soft-close drawers and cabinets with integrated j-door pulls
- Under-mount stainless steel sink with polished chrome faucet and pullout spray
- Task and mood lighting provided by under-cabinet LED fixtures
- Recessed pot lights offer a warm ambiance throughout the kitchen

PEACE OF MIND

- 2-5-10 New Home Warranty
- Secure building entry system with video enterphone, security cameras, and key-fob entry
- Secure and well-lit residential parkade
- 24-hour concierge located in 585 Austin
- Fire sprinkler system in all homes and common areas
- Expertly developed and built by Anthem
- Industry-leading Homeowner Care provided by Anthem

This is not an offering for sale. Such offering can only be made by way of disclosure statement. Wynwood Green is developed by Anthem 585 Austin Developments LP. Plans, features and finishes are subject to change. E & O.E.



RESIDENCES

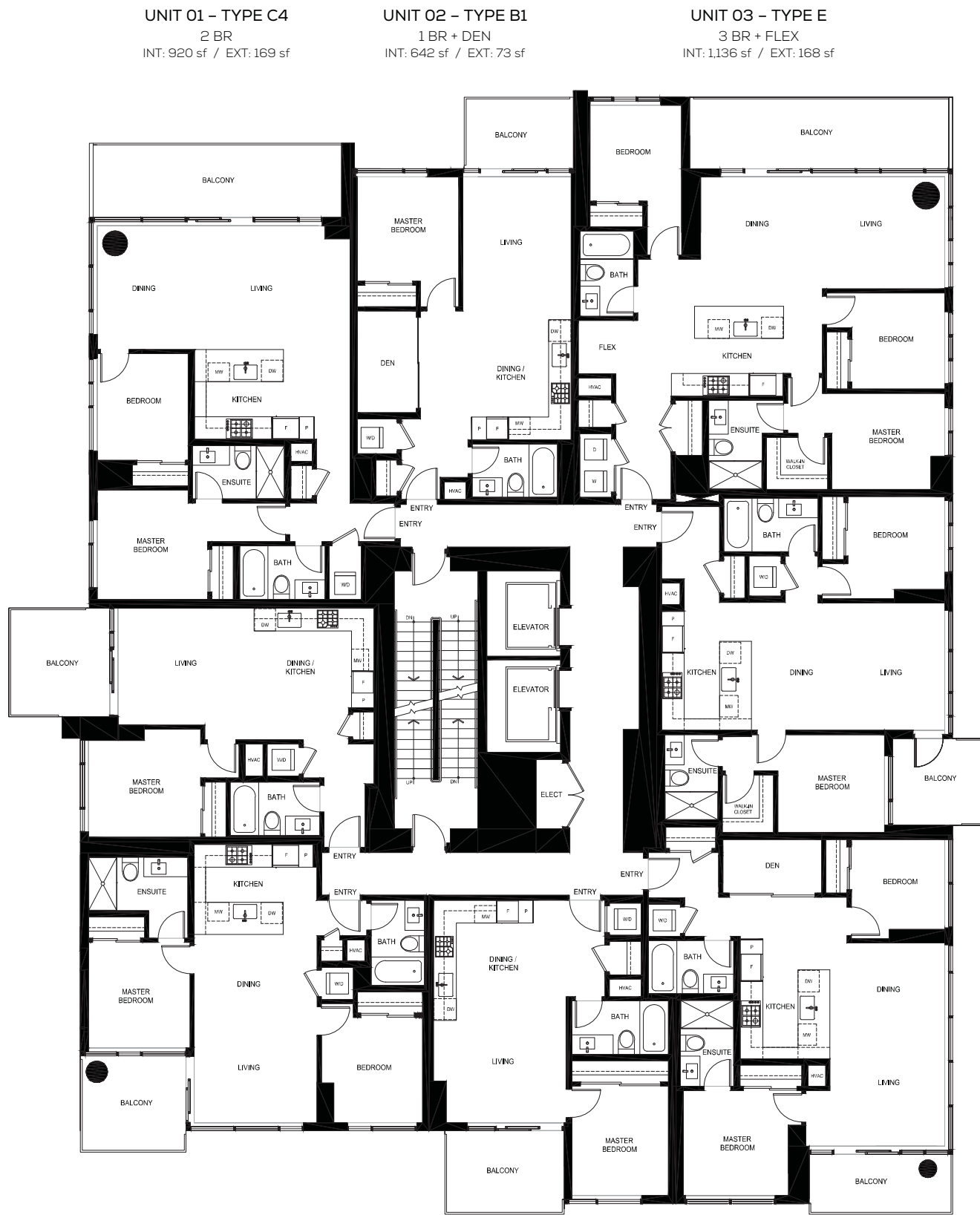
LEVELS 3-22

Artist rendering only.

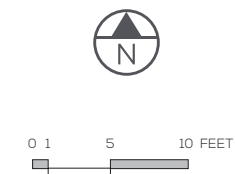
585 AUSTIN

LEVELS 3 - 22

UNIT 08 - TYPE A4
1 BR
INT: 603 sf / EXT: 101 sf



UNIT 04 - TYPE C2
2 BR
INT: 833 sf / EXT: 81 sf



UNIT 07 - TYPE C
2 BR
INT: 749 sf / EXT: 90 sf

UNIT 06 - TYPE A1
1 BR
INT: 538 sf / EXT: 89 sf

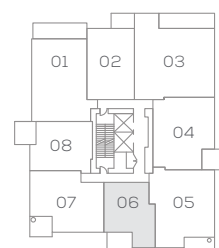
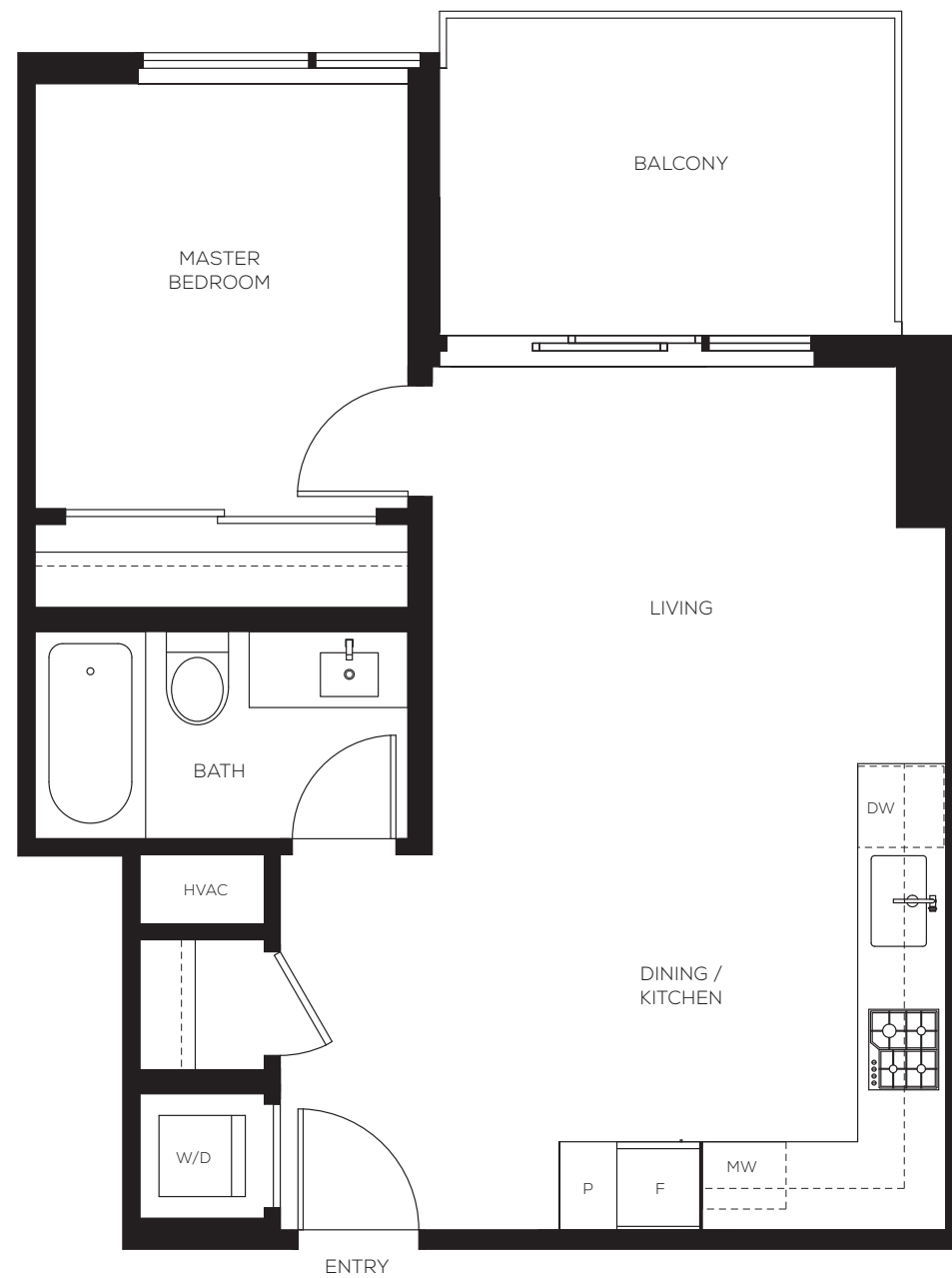
UNIT 05 - TYPE D
2 BR + DEN
INT: 875 sf / EXT: 78 sf

**WYNWOOD
GREEN**

A1

1 BEDROOM, 1 BATH

INTERIOR 538 SQ. FT.
EXTERIOR 89 SQ. FT.



LEVEL 3-22

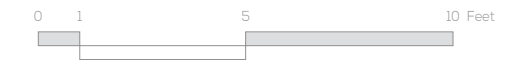
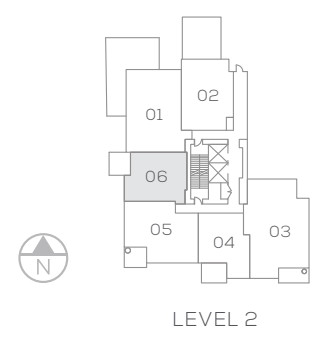
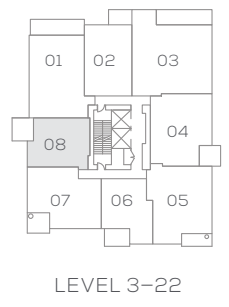
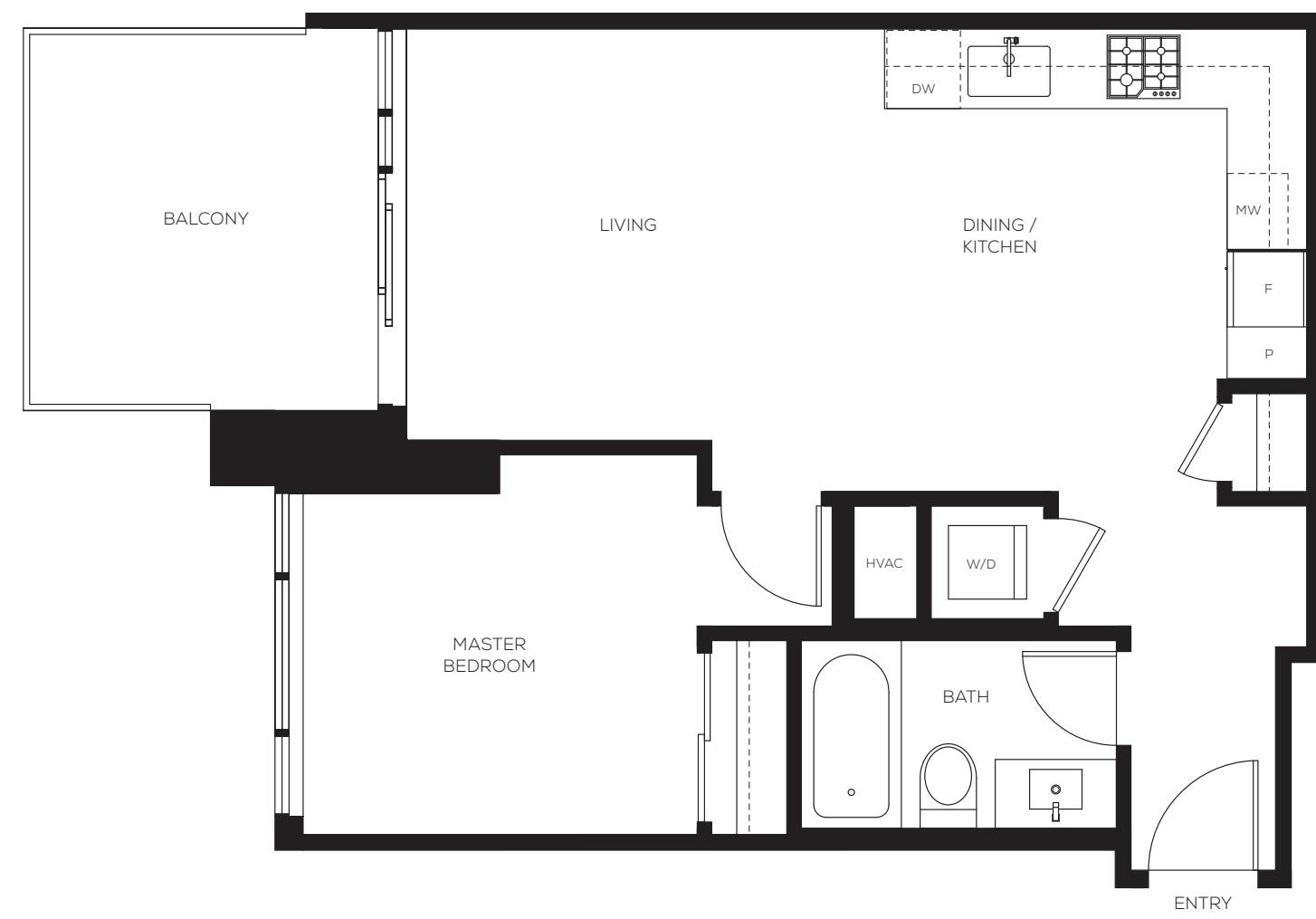


WYNWOOD
GREEN

A4

1 BEDROOM, 1 BATH

INTERIOR 603 SQ. FT.
EXTERIOR 101 SQ. FT.



WYNWOOD
GREEN

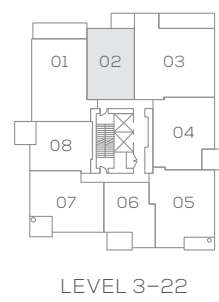
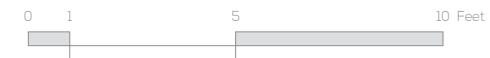
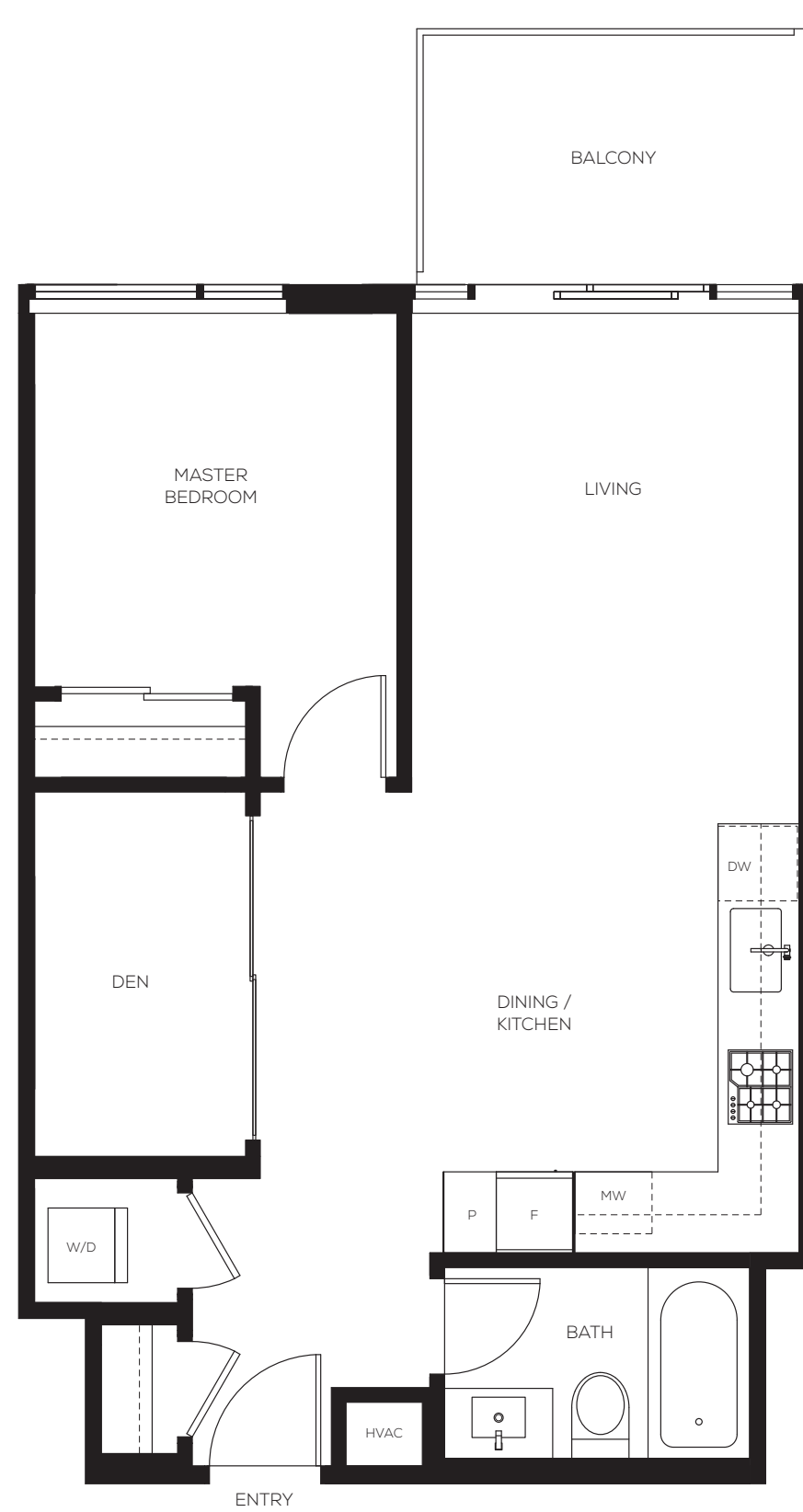
The developer (Anthem 585 Austin Developments LP) reserves the right to make changes and modifications to the information contained herein. Floorplans, floorplates and windows are subject to change without notice. Please contact a developer sales representative for details. E. & O.E. *The size and configuration of the balcony or patio represent only a typical balcony or patio in the development. The actual size and configuration of the balcony or patio for any strata lot may vary from that set out in this floor plan. Please contact a developer sales representative for details.

B1

1 BEDROOM + DEN,
1 BATH

INTERIOR 642 SQ. FT.
EXTERIOR 73 SQ. FT.

WYNWOOD
GREEN

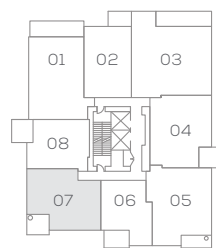
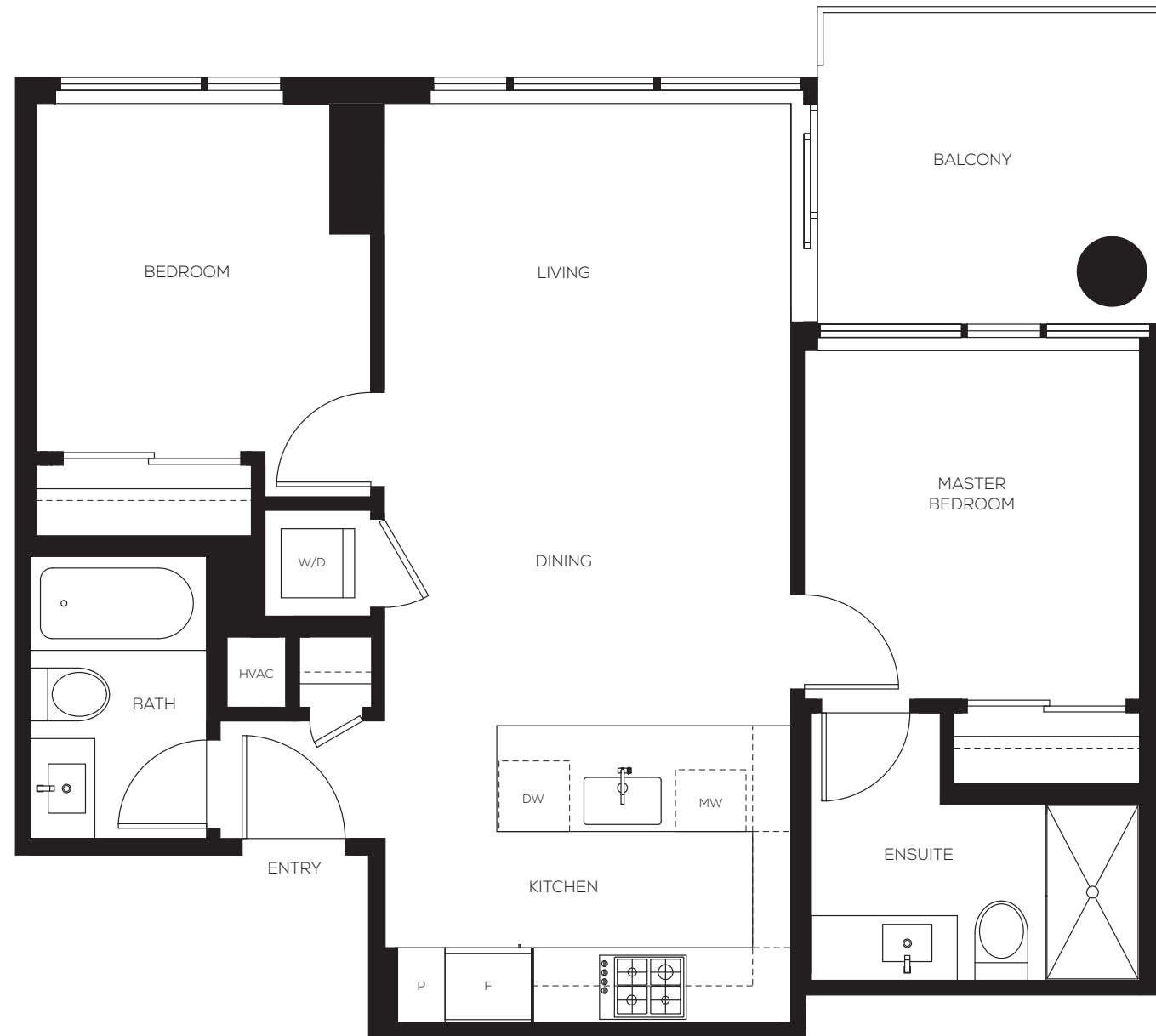


The developer (Anthem 585 Austin Developments LP) reserves the right to make changes and modifications to the information contained herein. Floorplans, floorplates and windows are subject to change without notice. Please contact a developer sales representative for details. E. & O.E. *The size and configuration of the balcony or patio represent only a typical balcony or patio in the development. The actual size and configuration of the balcony or patio for any strata lot may vary from that set out in this floor plan. Please contact a developer sales representative for details.

C

2 BEDROOM, 2 BATH

INTERIOR 749 SQ. FT.
EXTERIOR 90 SQ. FT.



LEVEL 3-22



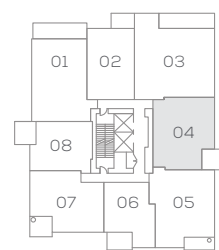
WYNWOOD
GREEN

The developer (Anthem 585 Austin Developments LP) reserves the right to make changes and modifications to the information contained herein. Floorplans, floorplates and windows are subject to change without notice. Please contact a developer sales representative for details. E. & O.E. *The size and configuration of the balcony or patio represent only a typical balcony or patio in the development. The actual size and configuration of the balcony or patio for any strata lot may vary from that set out in this floor plan. Please contact a developer sales representative for details.

C2

2 BEDROOM, 2 BATH

INTERIOR 833 SQ. FT.
EXTERIOR 81 SQ. FT.



LEVEL 3-22



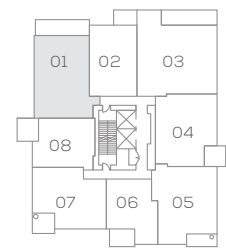
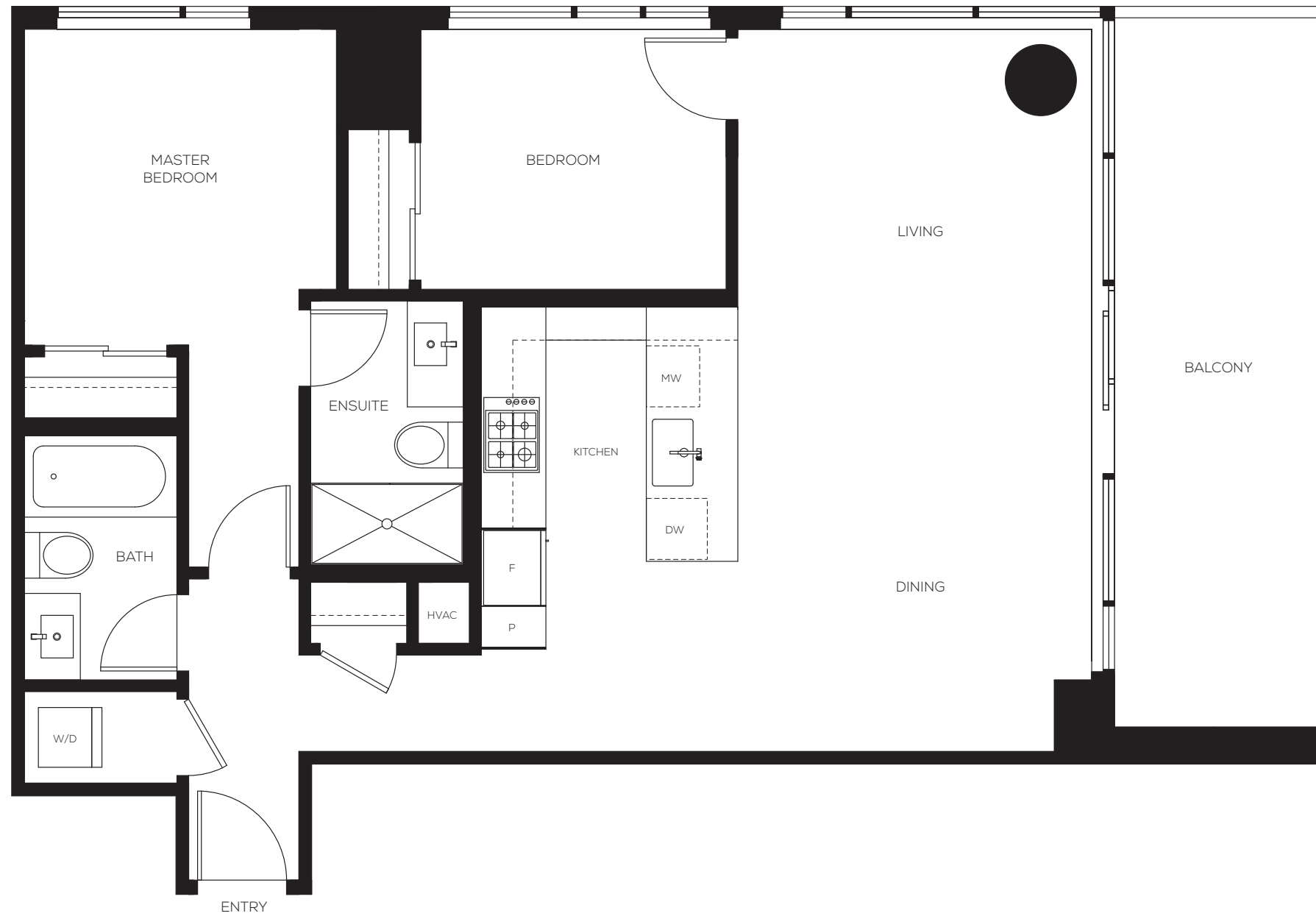
WYNWOOD
GREEN

The developer (Anthem 585 Austin Developments LP) reserves the right to make changes and modifications to the information contained herein. Floorplans, floorplates and windows are subject to change without notice. Please contact a developer sales representative for details. E. & O.E. *The size and configuration of the balcony or patio represent only a typical balcony or patio in the development. The actual size and configuration of the balcony or patio for any strata lot may vary from that set out in this floor plan. Please contact a developer sales representative for details.

C4

2 BEDROOM, 2 BATH

INTERIOR 920 SQ. FT.
EXTERIOR 169 SQ. FT.



LEVEL 3-22



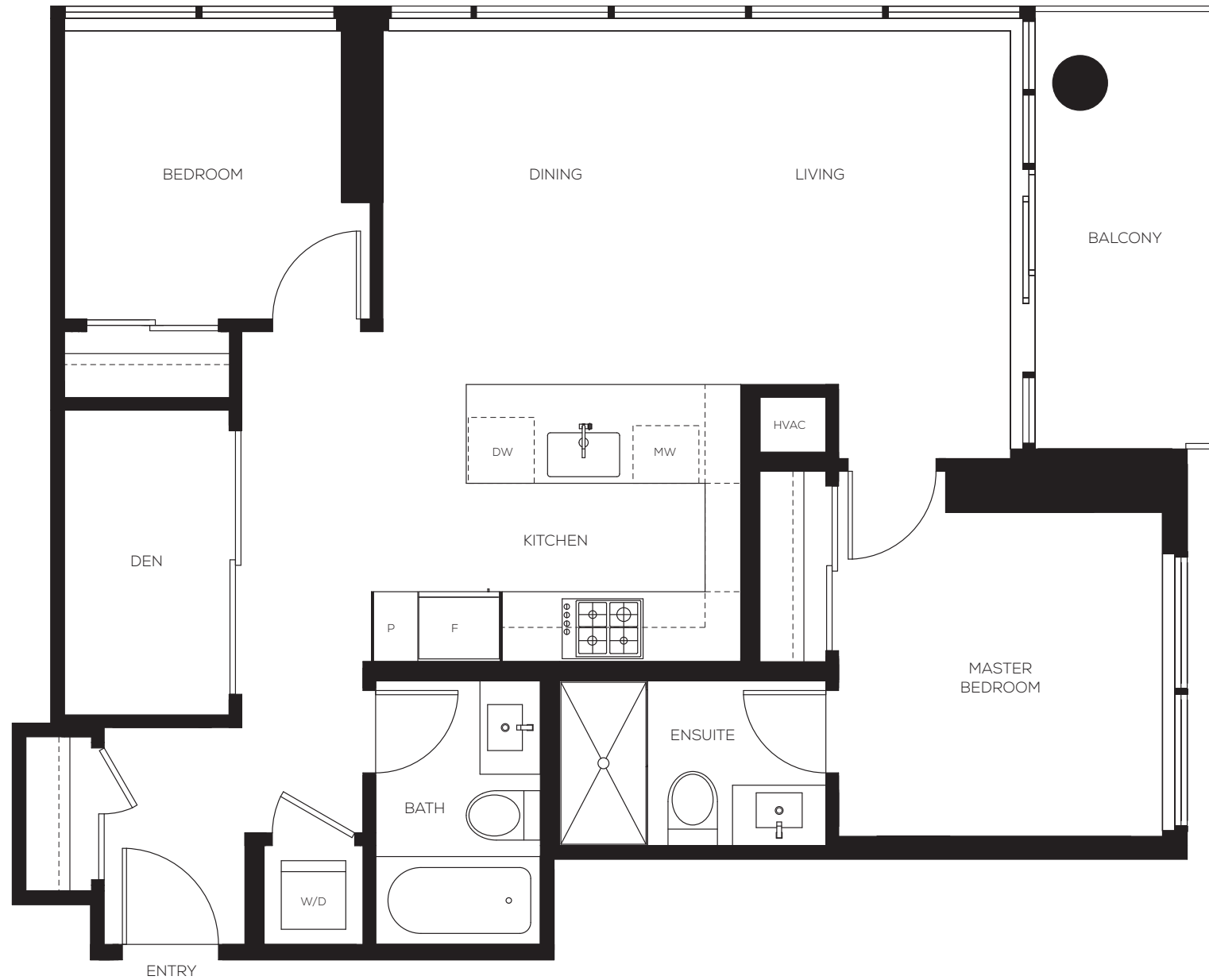
WYNWOOD
GREEN

The developer (Anthem 585 Austin Developments LP) reserves the right to make changes and modifications to the information contained herein. Floorplans, floorplates and windows are subject to change without notice. Please contact a developer sales representative for details. E. & O.E. *The size and configuration of the balcony or patio represent only a typical balcony or patio in the development. The actual size and configuration of the balcony or patio for any strata lot may vary from that set out in this floor plan. Please contact a developer sales representative for details.

D

2 BEDROOM + DEN,
2 BATH

INTERIOR 875 SQ. FT.
EXTERIOR 78 SQ. FT.



LEVEL 4-22



WYNWOOD
GREEN

The developer (Anthem 585 Austin Developments LP) reserves the right to make changes and modifications to the information contained herein. Floorplans, floorplates and windows are subject to change without notice. Please contact a developer sales representative for details. E. & O.E. *The size and configuration of the balcony or patio represent only a typical balcony or patio in the development. The actual size and configuration of the balcony or patio for any strata lot may vary from that set out in this floor plan. Please contact a developer sales representative for details.

E

3 BEDROOM + FLEX,
2 BATH

INTERIOR 1,136 SQ. FT.
EXTERIOR 168 SQ. FT.

WYNWOOD
GREEN

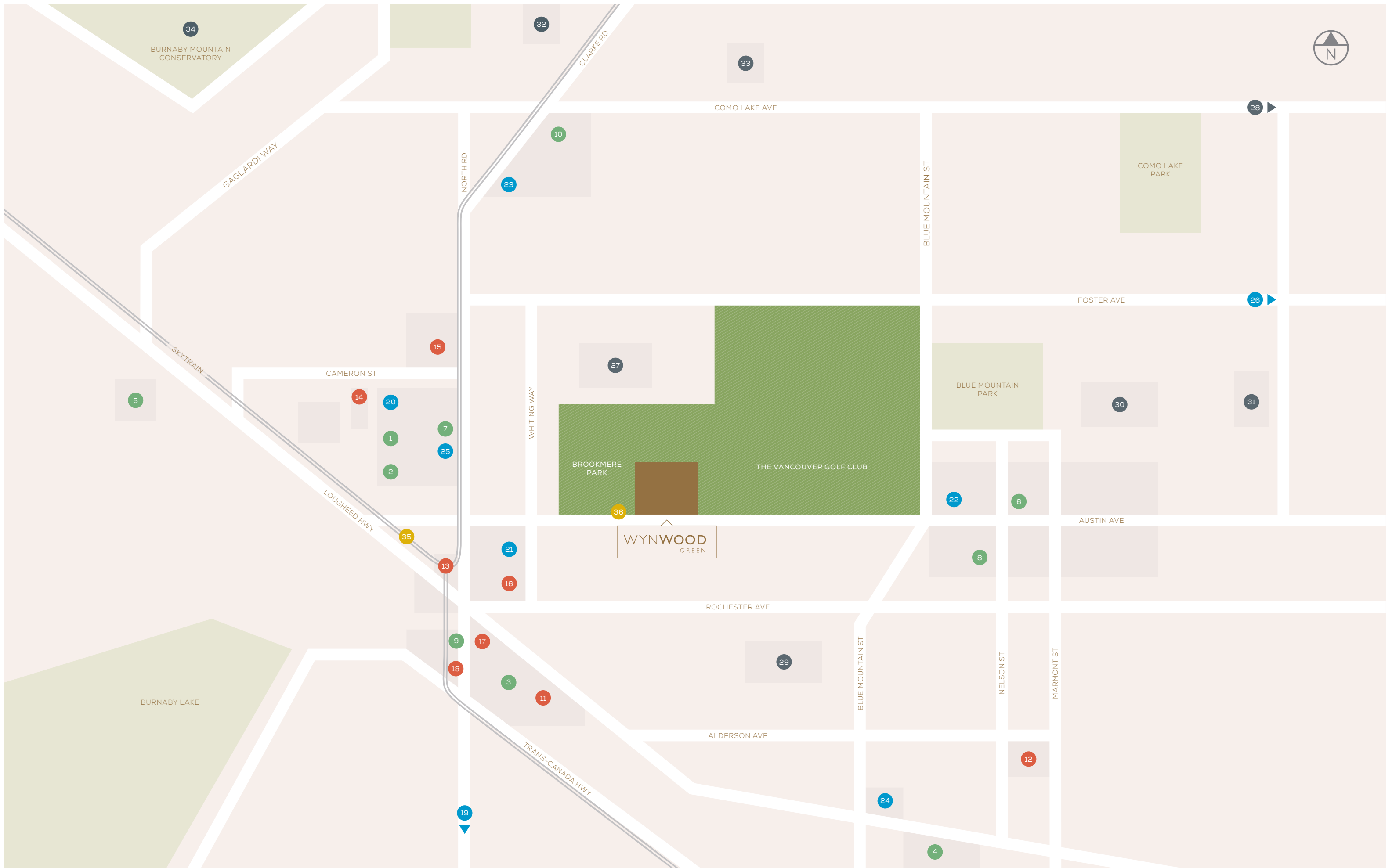


LEVEL 3-22



The developer (Anthem 585 Austin Developments LP) reserves the right to make changes and modifications to the information contained herein. Floorplans, floorplates and windows are subject to change without notice. Please contact a developer sales representative for details. E, G & O.E. *The size and configuration of the balcony or patio represent only a typical balcony or patio in the development. The actual size and configuration of the balcony or patio for any strata lot may vary from that set out in this floor plan. Please contact a developer sales representative for details.





A CENTRAL SANCTUARY

PLACED IN AN AREA RICH WITH GREEN SPACE AND URBAN CONVENIENCE

SHOPPING

1. LOUGHEED TOWN CENTRE
2. SAFEWAY LOUGHEED TOWN CENTRE
3. H-MART
4. IKEA COQUITLAM
5. COSTCO
6. SAFEWAY AUSTIN HEIGHTS
7. SAVE-ON-FOODS
8. RONA HOME CENTRE
9. HANNAM SUPERMARKET
10. SAFEWAY BURQUITLAM

RESTAURANTS

11. JOEY COOQUITLAM
12. SMOKING PIG
13. WHITE SPOT
14. GOLDEN PITA LEBANESE RESTAURANT
15. THAI CHEF CASUAL THAI CUISINE
16. HANAMORI SUSHI
17. KIMBAB CHEONGUK
18. HOUSE OF TOFU SOUP

HEALTH & WELLNESS

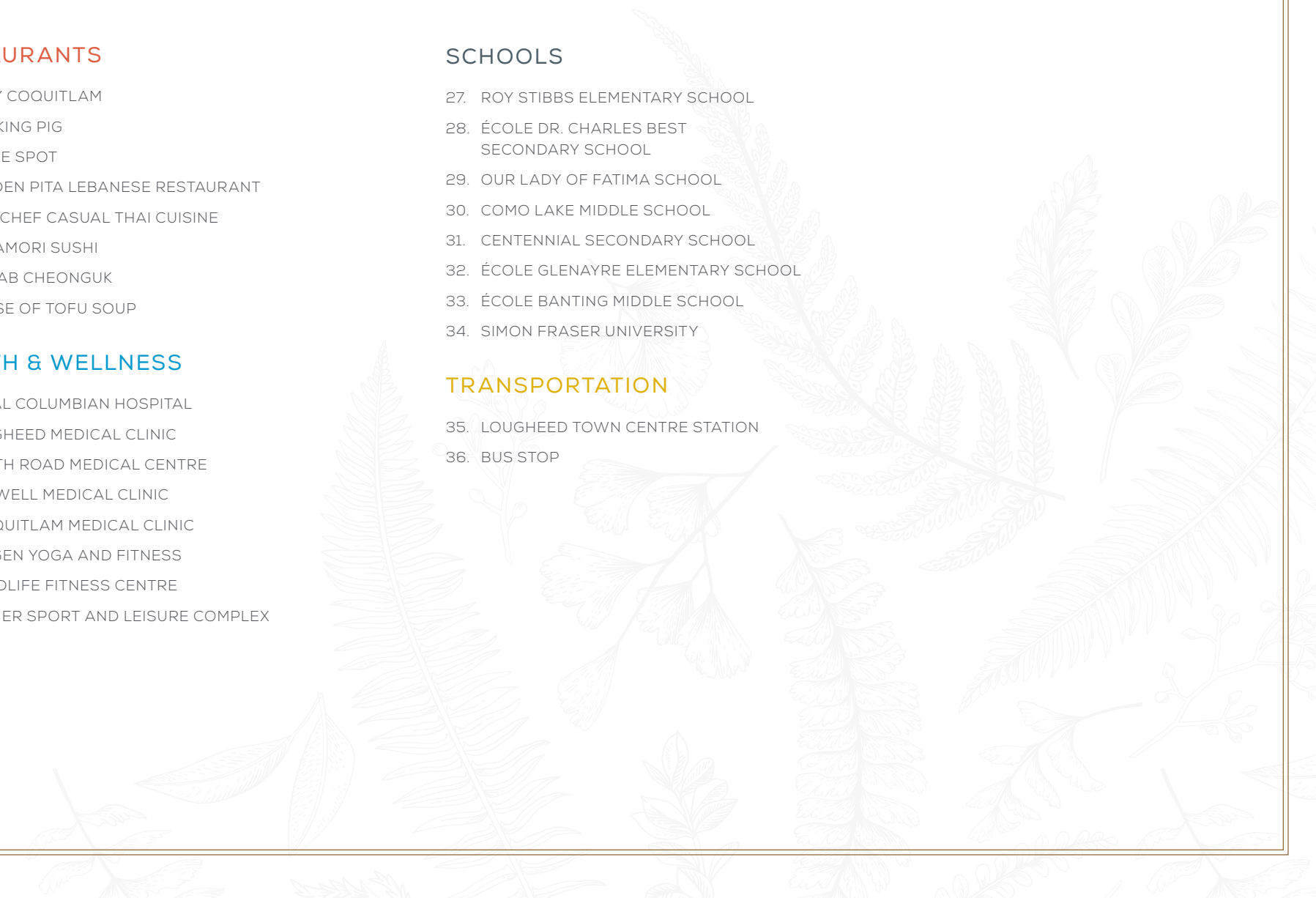
19. ROYAL COLUMBIAN HOSPITAL
20. LOUGHEED MEDICAL CLINIC
21. NORTH ROAD MEDICAL CENTRE
22. THE WELL MEDICAL CLINIC
23. BURQUITLAM MEDICAL CLINIC
24. OXYGEN YOGA AND FITNESS
25. GOODLIFE FITNESS CENTRE
26. POIRIER SPORT AND LEISURE COMPLEX

SCHOOLS

27. ROY STIBBS ELEMENTARY SCHOOL
28. ÉCOLE DR. CHARLES BEST SECONDARY SCHOOL
29. OUR LADY OF FATIMA SCHOOL
30. COMO LAKE MIDDLE SCHOOL
31. CENTENNIAL SECONDARY SCHOOL
32. ÉCOLE GLENAYRE ELEMENTARY SCHOOL
33. ÉCOLE BANTING MIDDLE SCHOOL
34. SIMON FRASER UNIVERSITY

TRANSPORTATION

35. LOUGHEED TOWN CENTRE STATION
36. BUS STOP



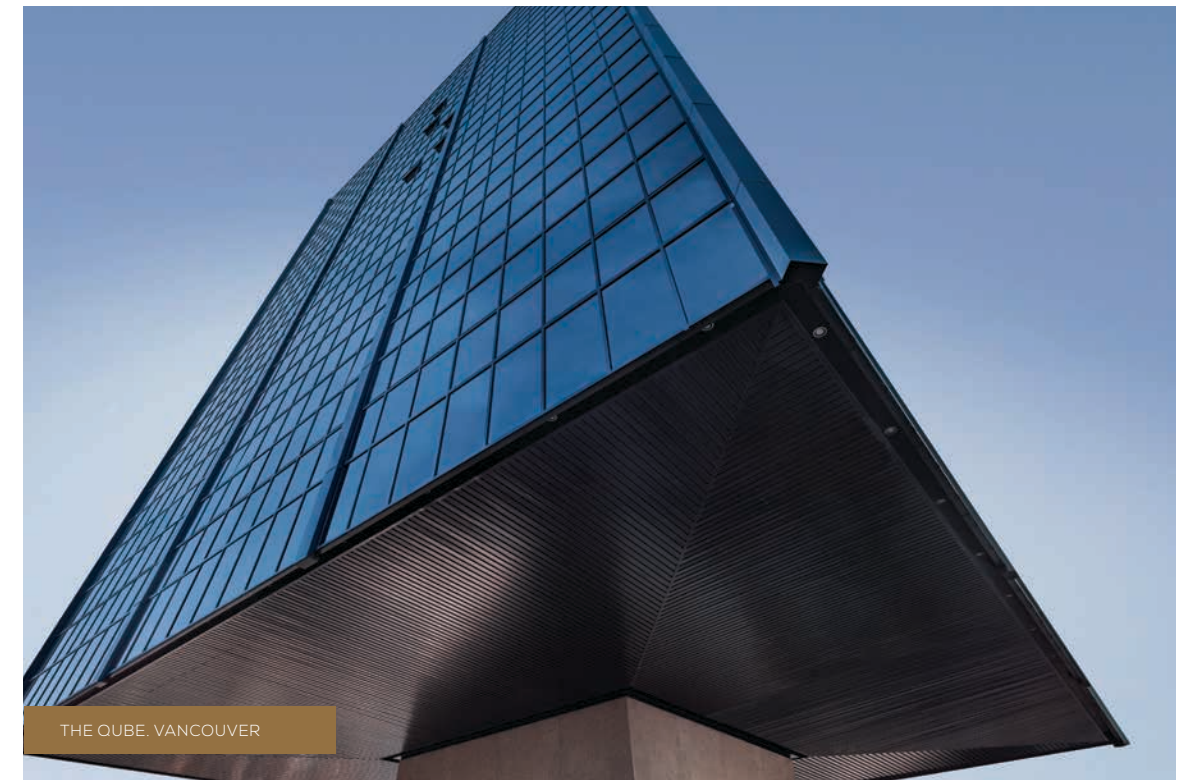
Growing Places

We are a real estate development, investment and management company that strives, solves and evolves to create better spaces and stronger communities.

Our growing residential portfolio includes more than 11,000 homes that are complete, in design or currently under construction, from master-planned mixed-use residential and multi-family to townhome and single-family communities.

We are Growing Places.

To explore our past, current, and coming soon communities, visit anthemproperties.com





WYNWOOD GREEN

PRESENTATION CENTRE: 201, 1020 AUSTIN AVENUE, COQUITLAM, BC, V3K 3P1

T: 604 917 0176 E: INFO@WYNWOODGREEN.CA

WYNWOODGREEN.CA

This is not an offering for sale. Such offering can only be made by way of disclosure statement. Wynwood Green is developed by Anthem 585 Austin Developments LP. Renderings, maps, photography, plans, features and finishes are representational only. E&O.E.