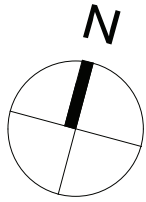
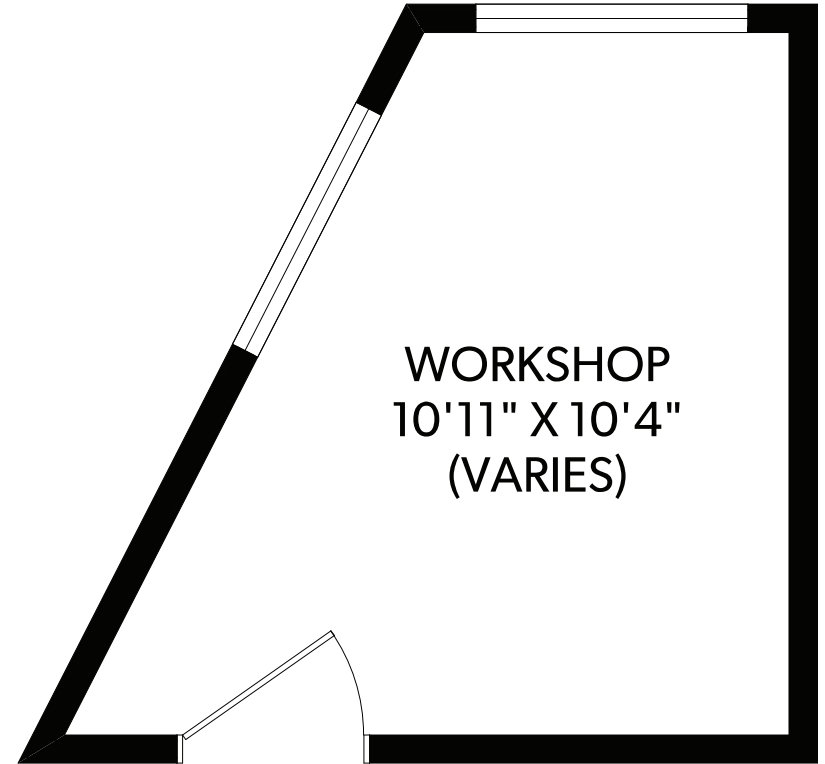
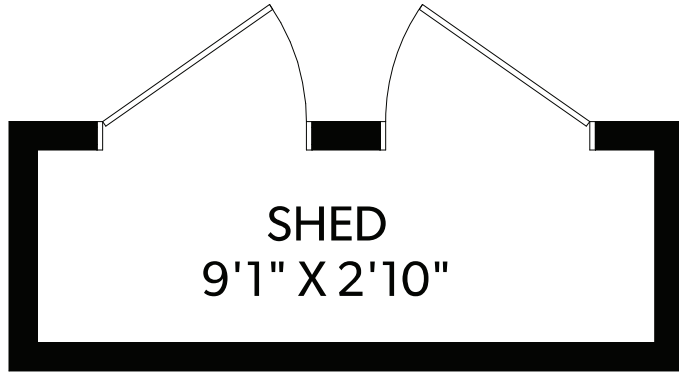


OUTBUILDINGS



FLOOR	FINISHED	UNFINISHED	TOTAL
MAIN	1533	0	1533
TOTAL	1533	0	1533

OTHER AREAS	
DECK	307
PATIO	315
BALCONY	203
ENCLOSED BALCONY	101
STORAGE	105
SHED	36
WORKSHOP	99



2206 MILLSTREAM ROAD

DOCUMENT PREPARED FOR THE EXCLUSIVE USE OF
CHERYL BARNES

250-388-6998
 ORDERS@REALFOTO.CA MEASURED 08/02/2018 BY DAYTEN SHEFFAR

All information furnished regarding this property is from sources deemed reliable but no warranty or representation is made to the accuracy thereof.



RE/MAX
CAMOSUN
 Each Office Independently Owned and Operated