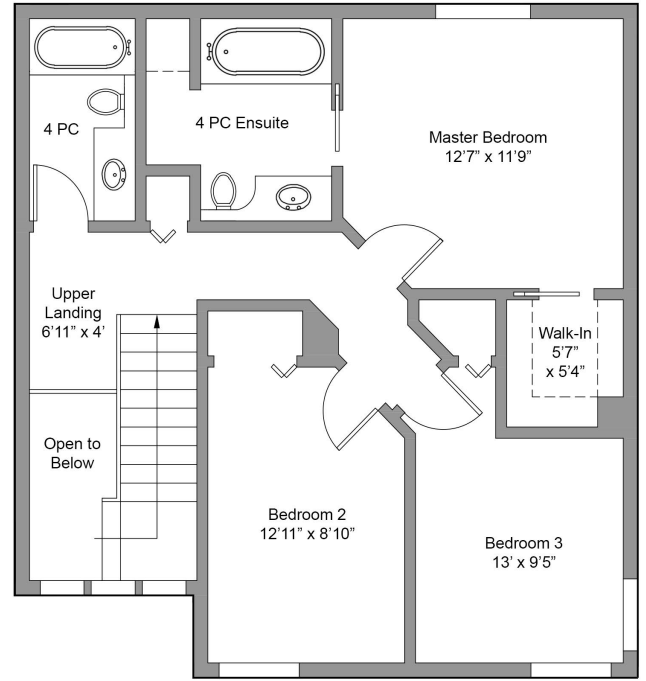
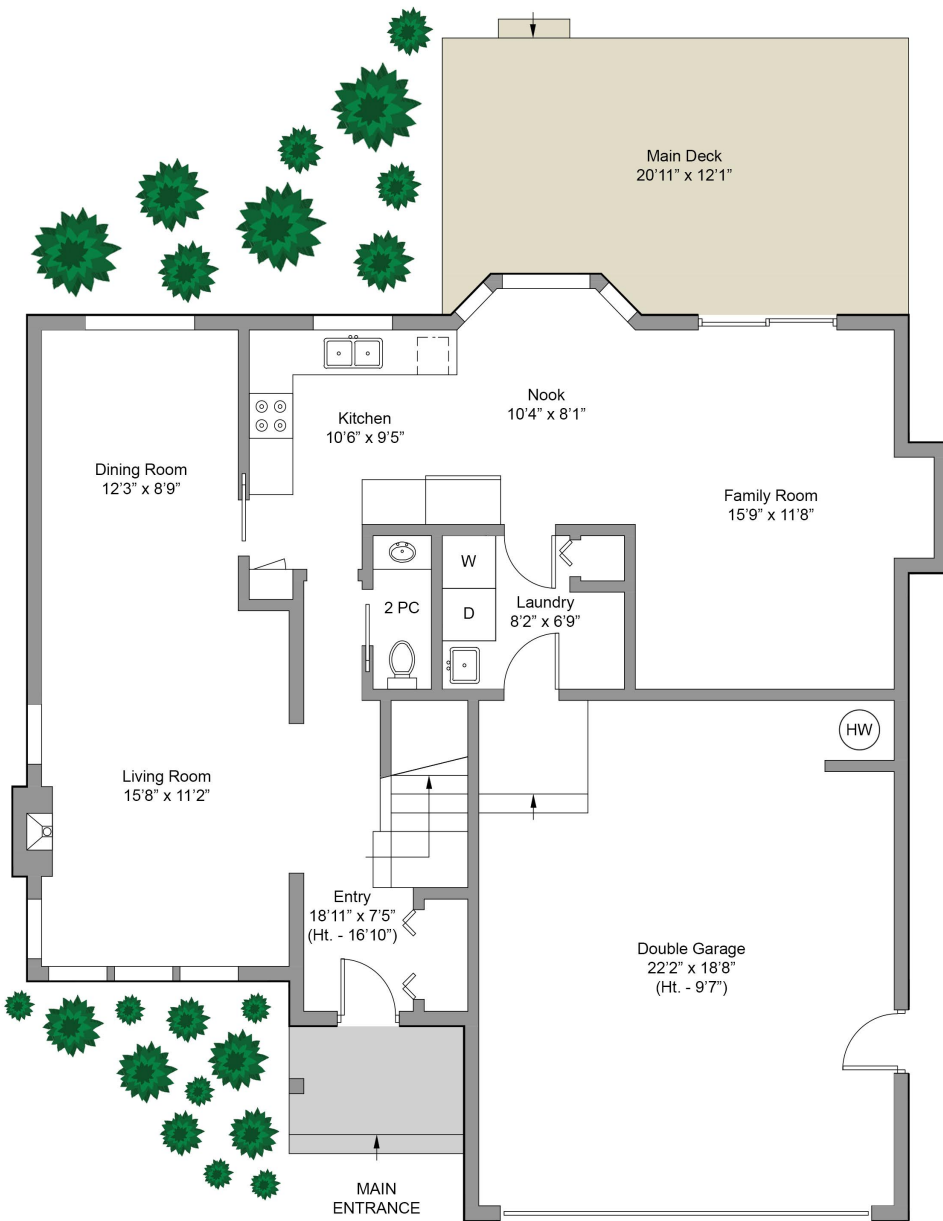


Cheryl Barnes

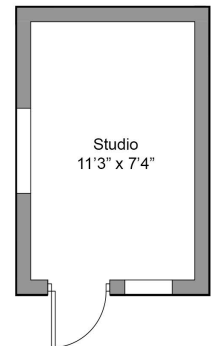
We're in Your Community!



Upper Floor
761 Sqft.
(Avg Ht. - 8')



Main Floor
1410 Sqft.
(Avg Ht. - 8')



410 Creed Rd.

This floor-plan was created for the exclusive use of Cheryl Barnes and RE/MAX Camosun. Area and dimensions are approximate, buyer to verify on site.

FLOOR	AREA (Sq. Ft.)		
	Finished	Unfinished	Garage
Upper	761	0	
Main	963	0	447
Total	1724	0	447
Studio	98	0	