

MONET TYLER

604.931.4307

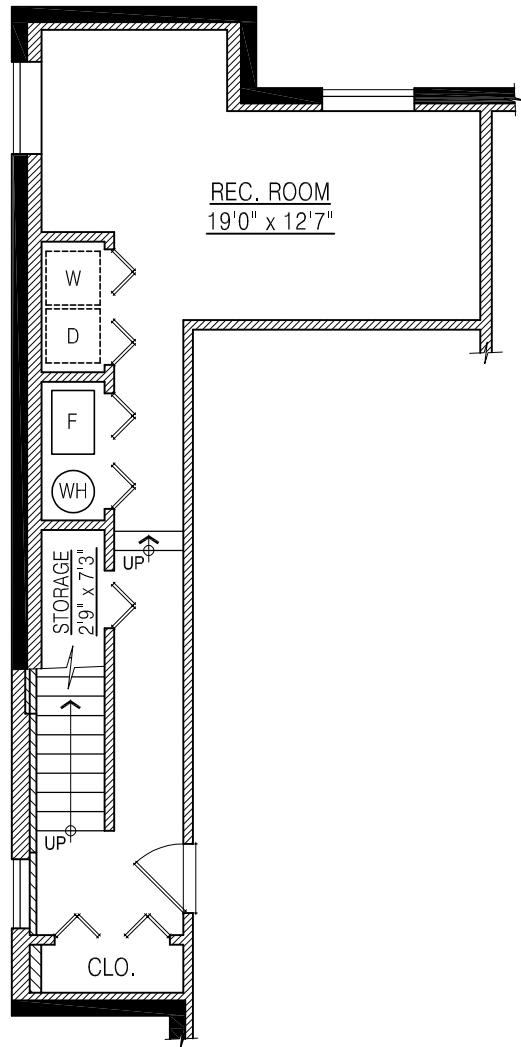
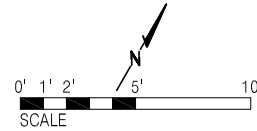
Royal LePage West

www.monettyler.com

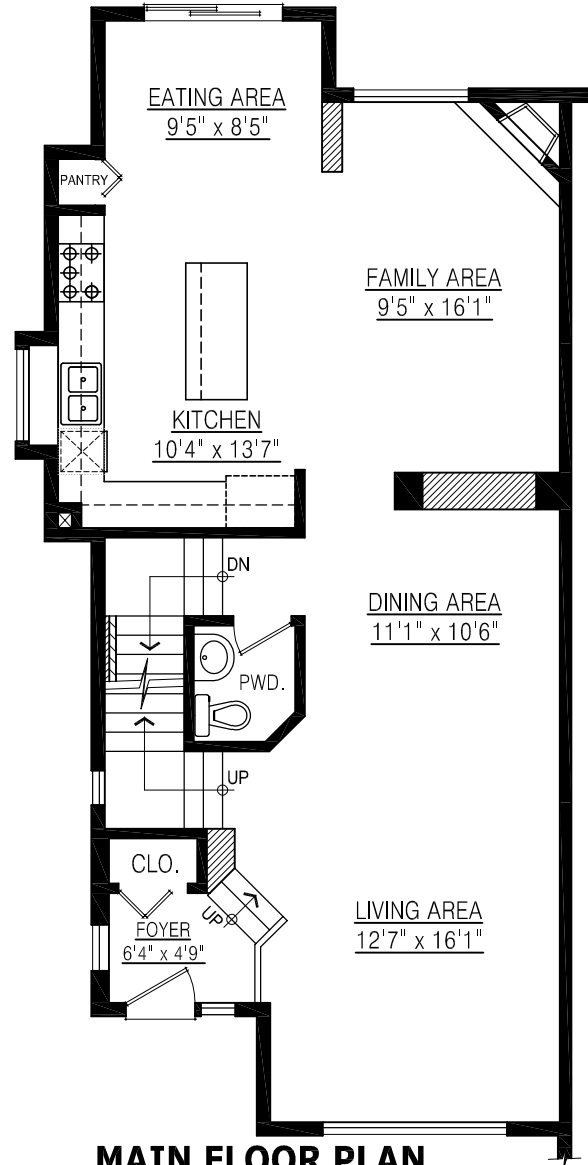
monet@monettyler.com

**101 Forest Parkway
Port Moody, BC**

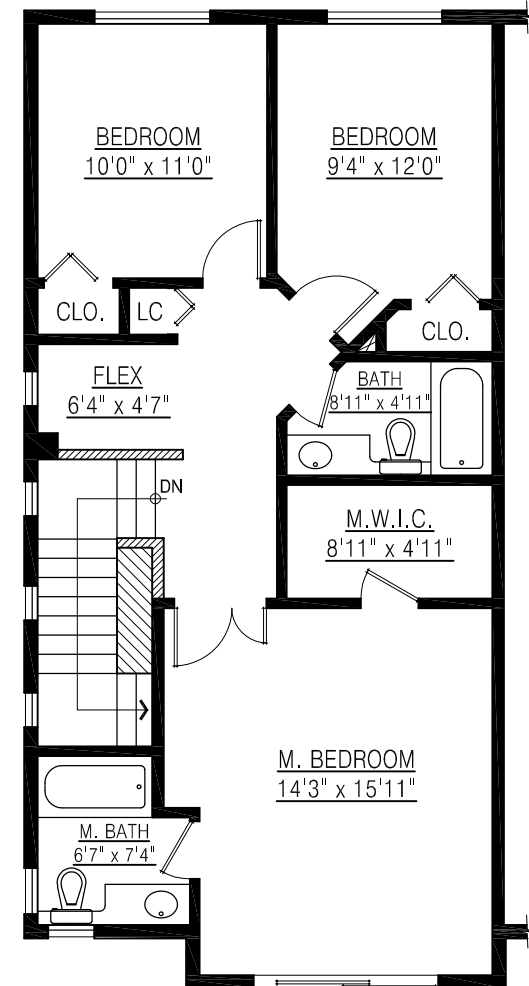
Lower Floor: 487 sq. ft.
Main Floor: 969 sq. ft.
Upper Floor: 834 sq. ft.
Total: 2,290 sq. ft.



LOWER FLOOR PLAN
FLOOR AREA: 487 sq.ft.



MAIN FLOOR PLAN
FLOOR AREA: 969 sq.ft.



UPPER FLOOR PLAN
FLOOR AREA: 834 sq.ft.