

MONET TYLER

604.931.4307

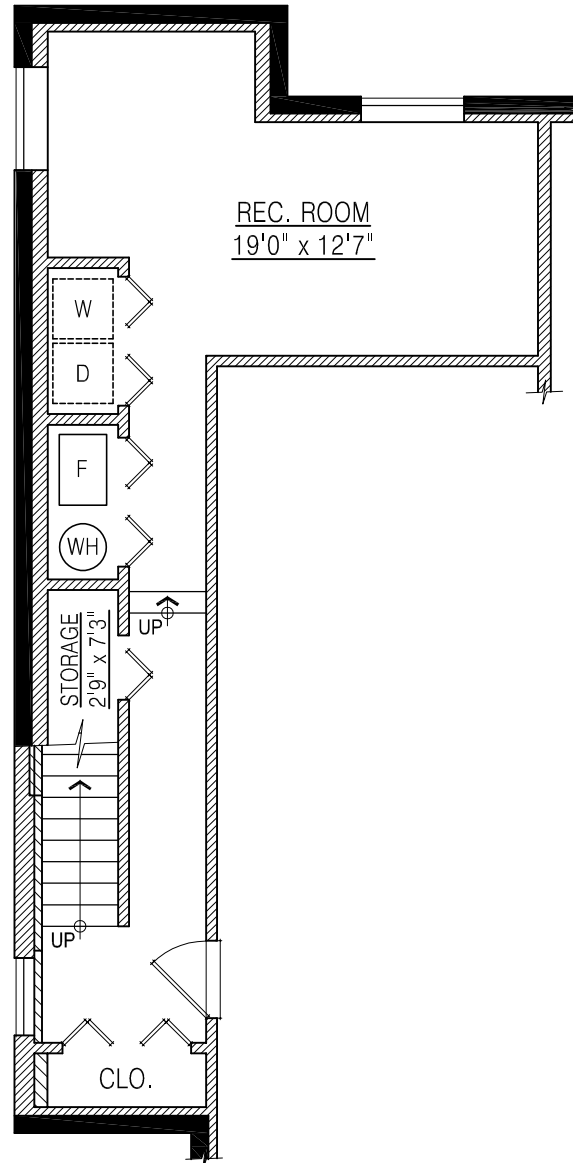
Royal LePage West

www.monettyler.com

monet@monettyler.com

**101 Forest Parkway
Port Moody, BC**

Lower Floor: 487 sq. ft.
Main Floor: 969 sq. ft.
Upper Floor: 834 sq. ft.
Total: 2,290 sq. ft.



LOWER FLOOR PLAN
FLOOR AREA: 487 sq.ft.

