

MONET TYLER

604.931.4307

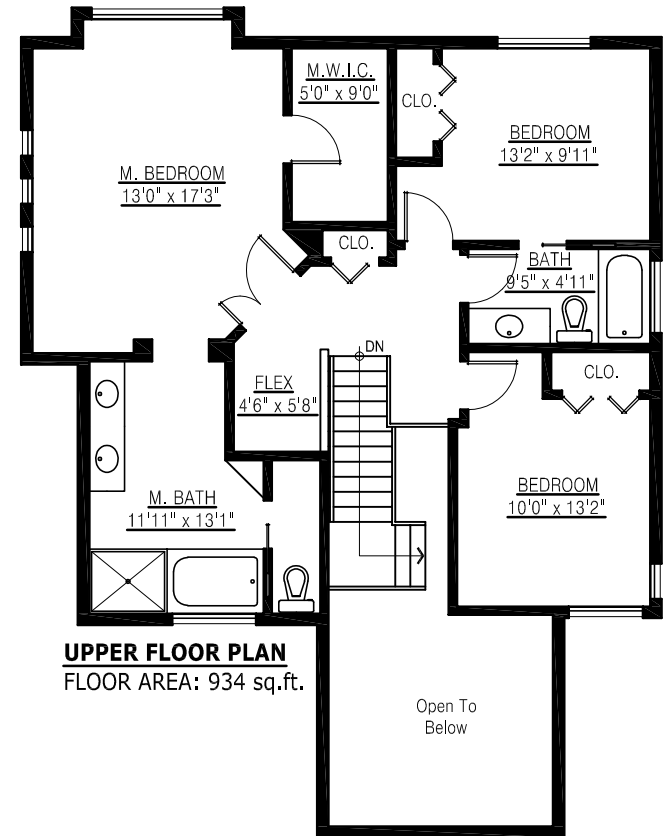
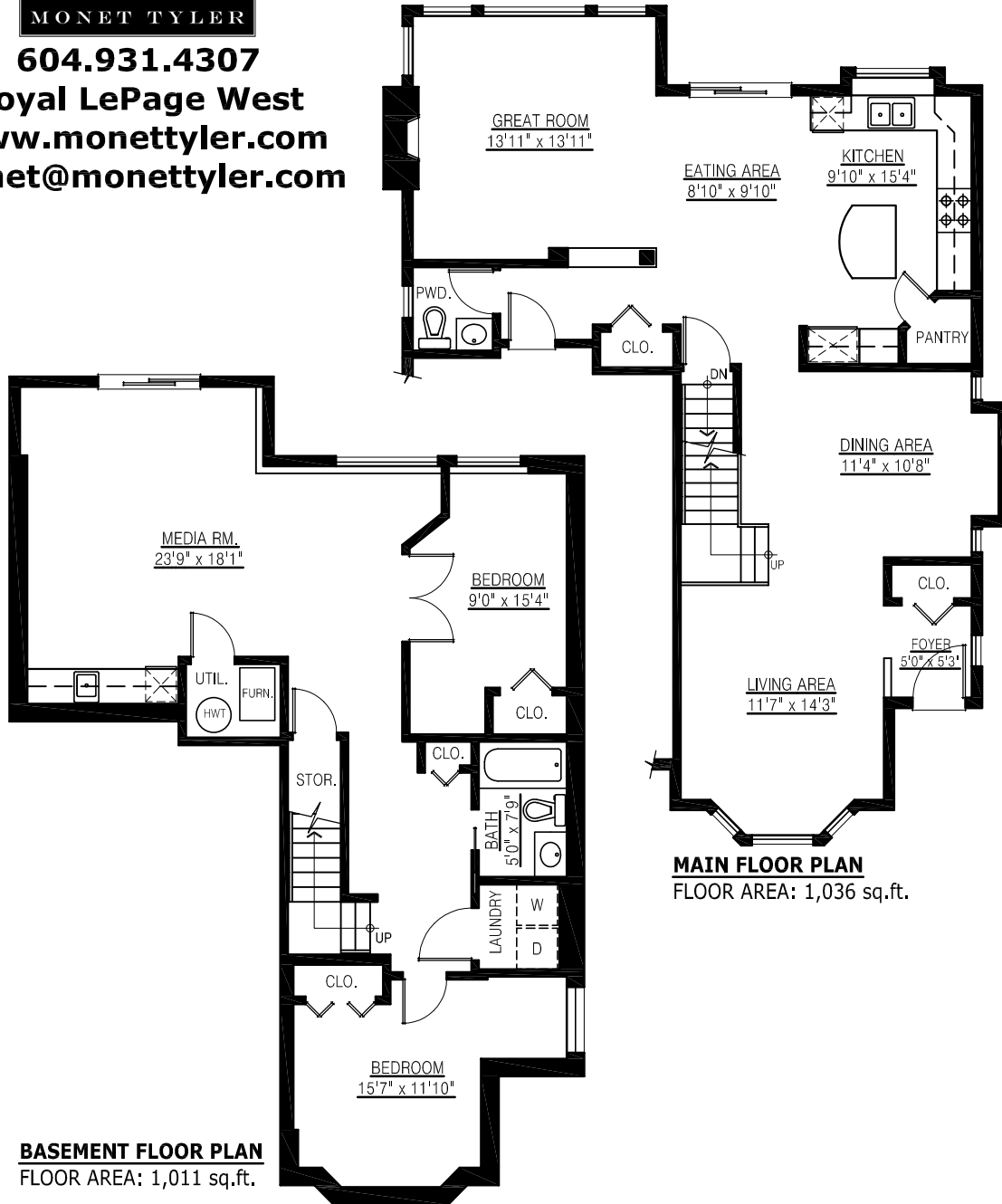
Royal LePage West

www.monettyler.com

monet@monettyler.com

**51 Holly Drive
Port Moody, BC**

Basement Floor: 1,011 sq. ft.
Main Floor: 1,036 sq. ft.
Upper Floor: 934 sq. ft.
Total: 2,981 sq. ft.



BASEMENT FLOOR PLAN
FLOOR AREA: 1,011 sq.ft.

