

MONET TYLER

604.931.4307

Royal LePage West

www.monettyler.com

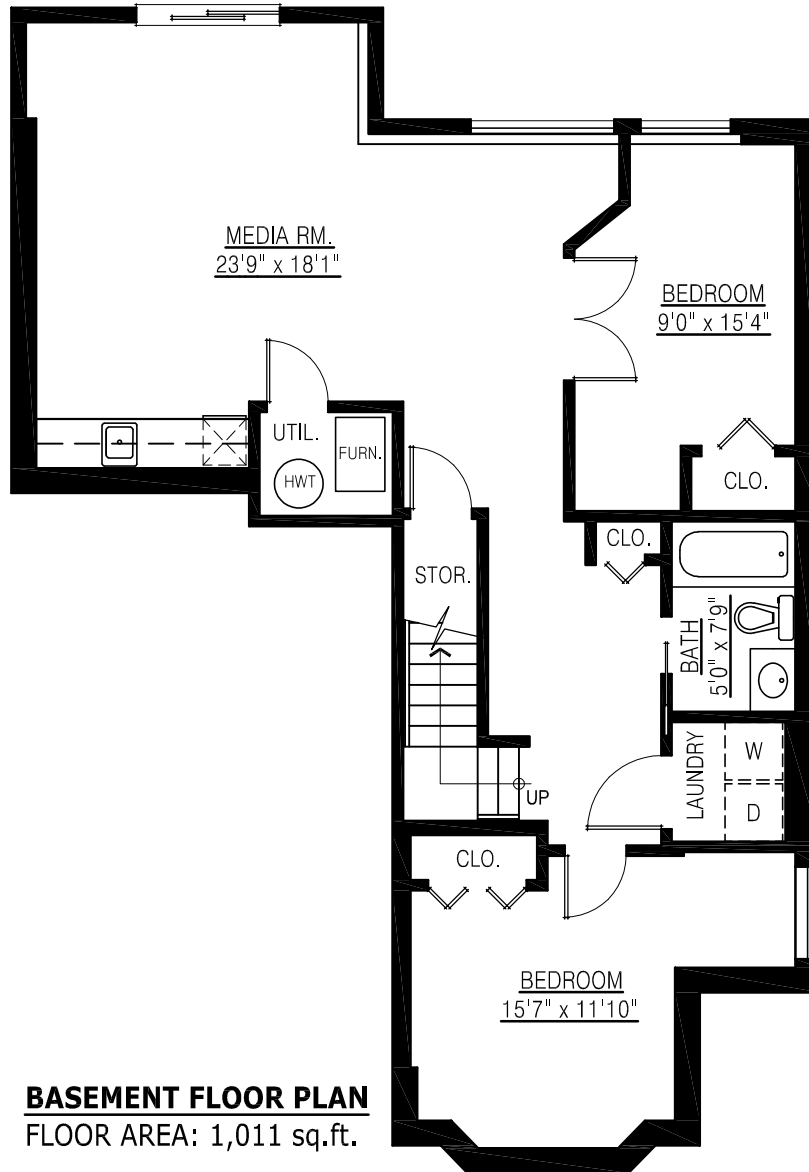
monet@monettyler.com

**51 Holly Drive  
Port Moody, BC**

**Basement Floor: 1,011 sq. ft.**  
**Main Floor: 1,036 sq. ft.**  
**Upper Floor: 934 sq. ft.**  

---

**Total: 2,981 sq. ft.**



**BASEMENT FLOOR PLAN**  
FLOOR AREA: 1,011 sq.ft.

