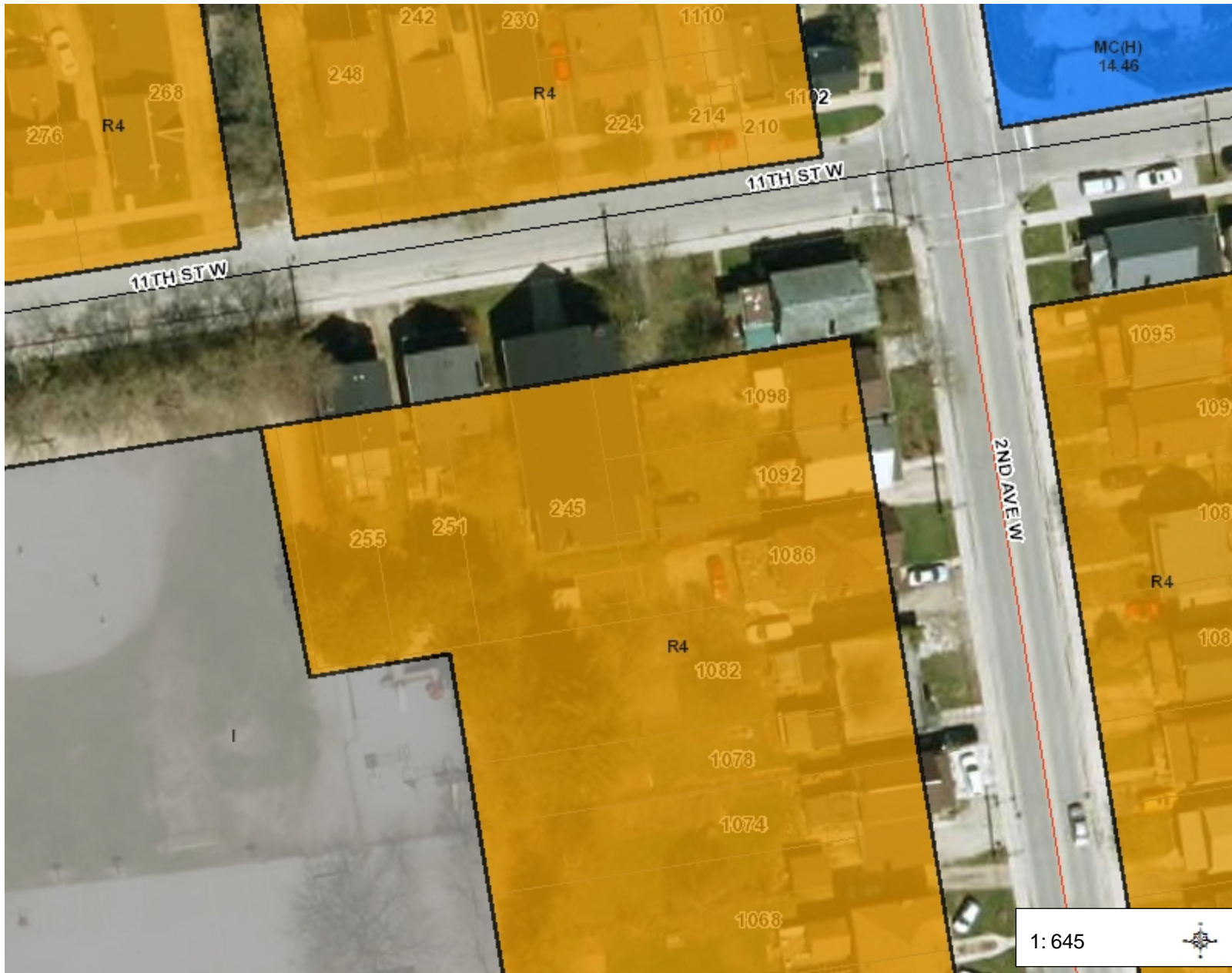


## Notes

R4



## Legend

### Zoning

- "Subject to Control"
- Agricultural (A)
- Core Commercial (C1)
- Retail Commercial (C2)
- Retail Commercial (Holding) (C2H)
- Neighbourhood Commercial (C3)
- Arterial Commercial (C4)
- Arterial Commercial (Holding) (C4H)
- Regional Shopping Centre (C5)
- Institutional (I)
- Institutional Holding (IH)
- General Industrial (M1)
- Heavy Industrial (M2)
- Heavy Industrial (M2H)
- Mixed Use Commercial (MC)
- Mixed Use Commercial (Holding) (MCH)
- Multiple Residential (MR)
- Multiple Residential (Holding) (MRH)
- Mixed Use Industrial (MU)
- Mixed Use Industrial (MUH)
- Open Space (OS)
- Open Space (Holding) (OSH)
- Single Residential (R1)
- Low Density Residential (R2)
- Low Density Residential (R3)
- Low Density Residential (Holding) (R3H)

32.8      0      16.38      32.8 Meters

NAD\_1983\_UTM\_Zone\_17N  
City of Owen Sound

This map is a user generated static output from an Internet mapping site and is for reference only. Data layers that appear on this map may or may not be accurate, current, or otherwise reliable.

THIS MAP IS NOT TO BE USED FOR NAVIGATION