



SCOTT W. TODD
 Scott W. Todd Real Estate
 RE/MAX Masters Realty
 1453 Bellevue Avenue
 West Vancouver BC V8B 0G8

Phone: 778-688-8868
 Email: scott@scottwtodd.com

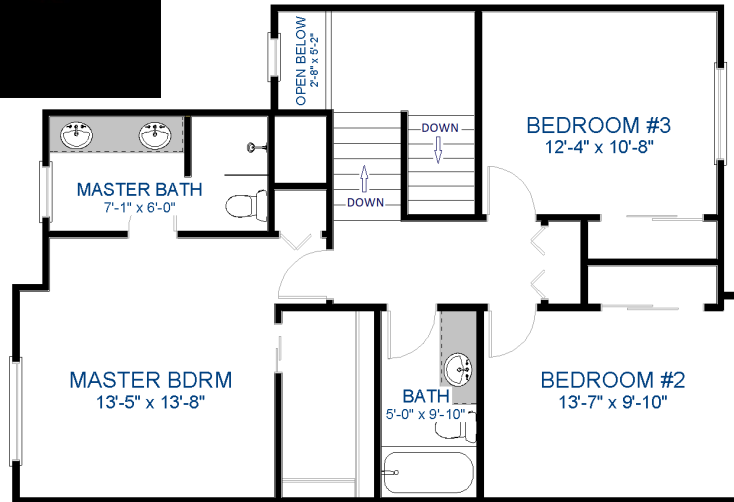


26 Rivers Walk – 40632 Government Rd. – Squamish, BC

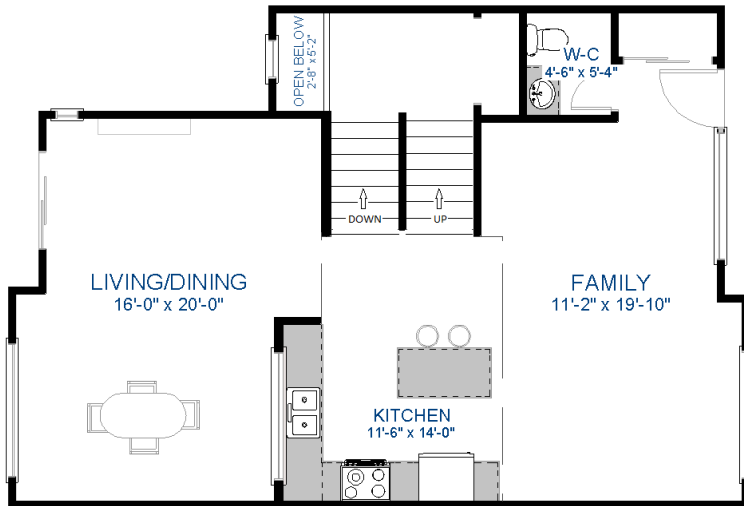
Living Area:

Upper Level: 886 sf.
 Main Floor: 886 sf.
 Lower Level: 481 sf.

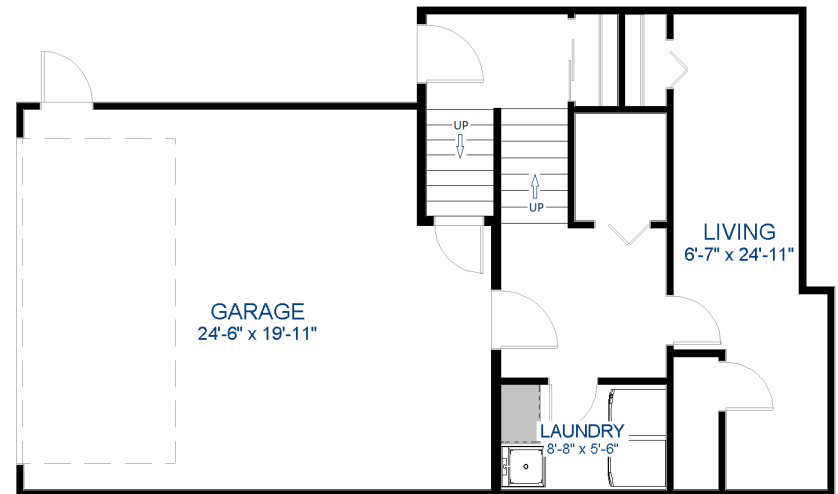
Total: 2,253 sf.



UPPER LEVEL - Living Area
886 sq ft



MAIN LEVEL - Living Area
886 sq ft



LOWER LEVEL - Living Area
481 sq ft

*Information contained in this floor plan is believed to be accurate, but not guaranteed. Square footage is approximate.
 360° Interactive Tours - Floor Plans - Photography - Aerial Footage



SCOTT W. TODD
Scott W. Todd Real Estate
RE/MAX Masters Realty
1453 Bellevue Avenue
West Vancouver BC V8B 0G8



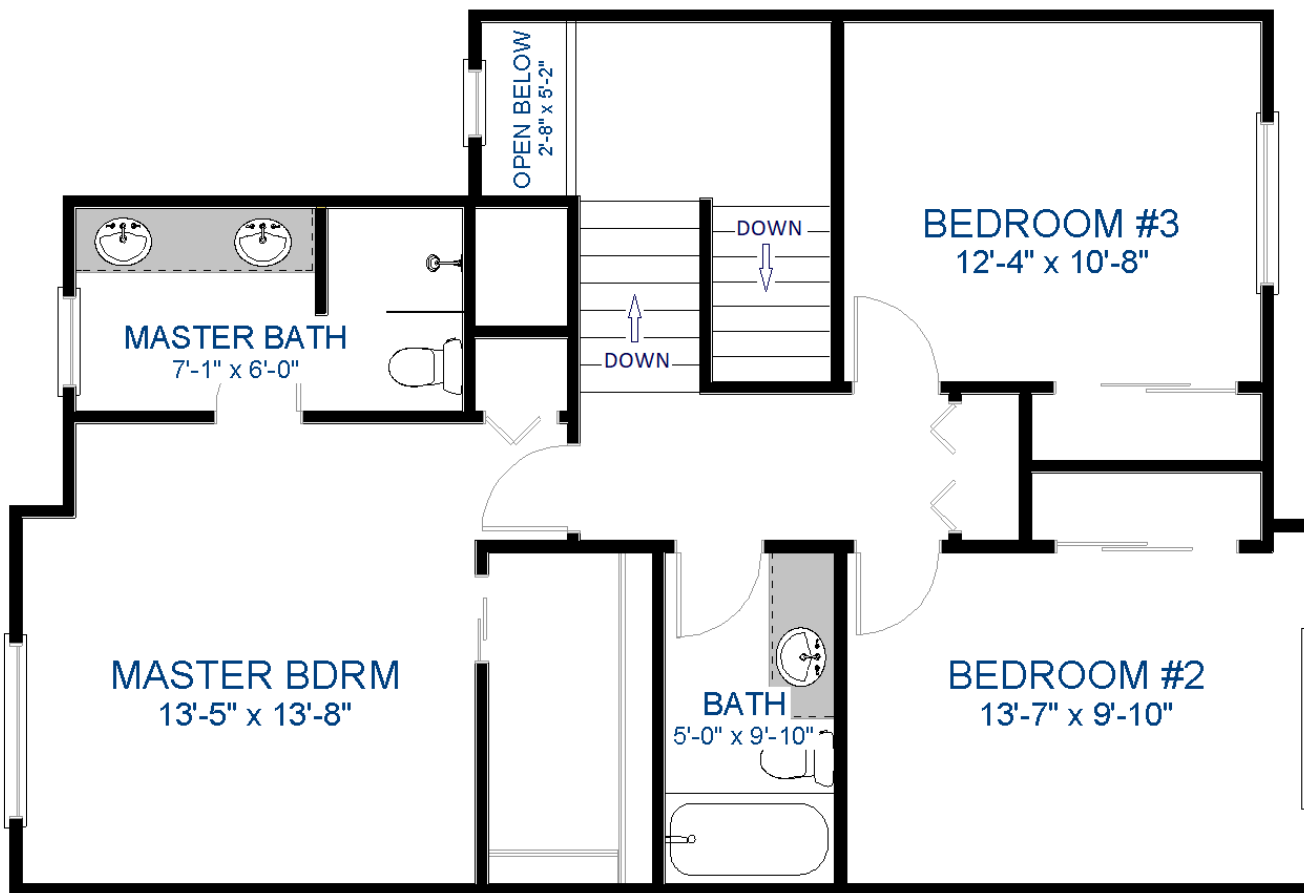
Phone: 778-688-8868
Email: scott@scottwtodd.com

26 Rivers Walk – 40632 Government Rd. – Squamish, BC

Living Area:

Upper Level: 886 sf.
Main Floor: 886 sf.
Lower Level: 481 sf.

Total: 2,253 sf.



UPPER LEVEL - Living Area
886 sq ft

*Information contained in this floor plan is believed to be accurate, but not guaranteed. Square footage is approximate.
360° Interactive Tours - Floor Plans - Photography - Aerial Footage

"YOUR REAL ESTATE SEAL OF EXCELLENCE"™



SCOTT W. TODD

Scott W. Todd Real Estate
RE/MAX Masters Realty
1453 Bellevue Avenue
West Vancouver BC V8B 0G8



Phone: 778-688-8868

Email: scott@scottwtodd.com

26 Rivers Walk – 40632 Government Rd. – Squamish, BC

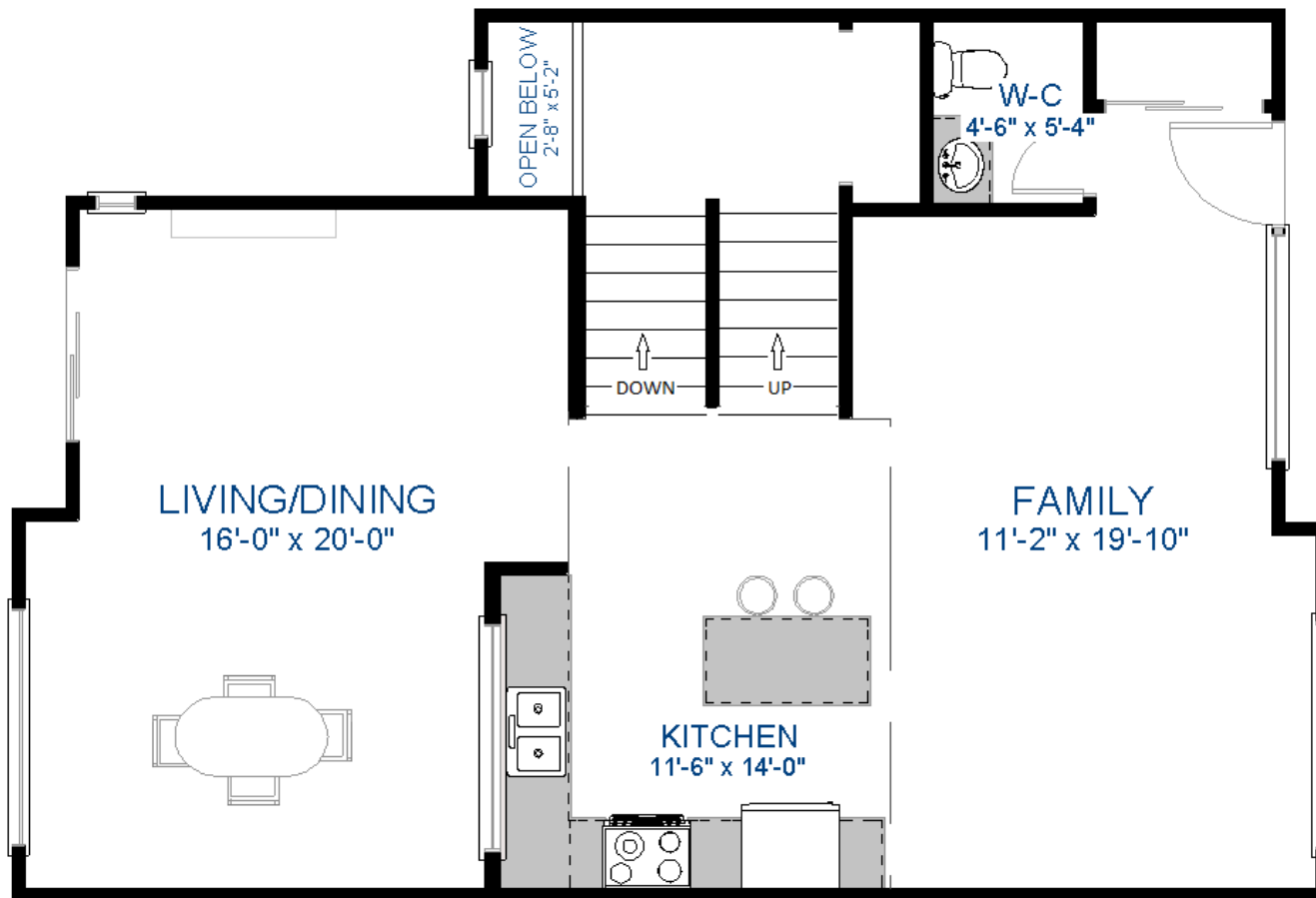
Living Area:

Upper Level: 886 sf.

Main Floor: 886 sf.

Lower Level: 481 sf.

Total: 2,253 sf.



MAIN LEVEL- Living Area
886 sq ft

*Information contained in this floor plan is believed to be accurate, but not guaranteed. Square footage is approximate.
360° Interactive Tours - Floor Plans - Photography - Aerial Footage

"YOUR REAL ESTATE SEAL OF EXCELLENCE"™



SCOTT W. TODD
Scott W. Todd Real Estate
RE/MAX Masters Realty
1453 Bellevue Avenue
West Vancouver BC V8B 0G8



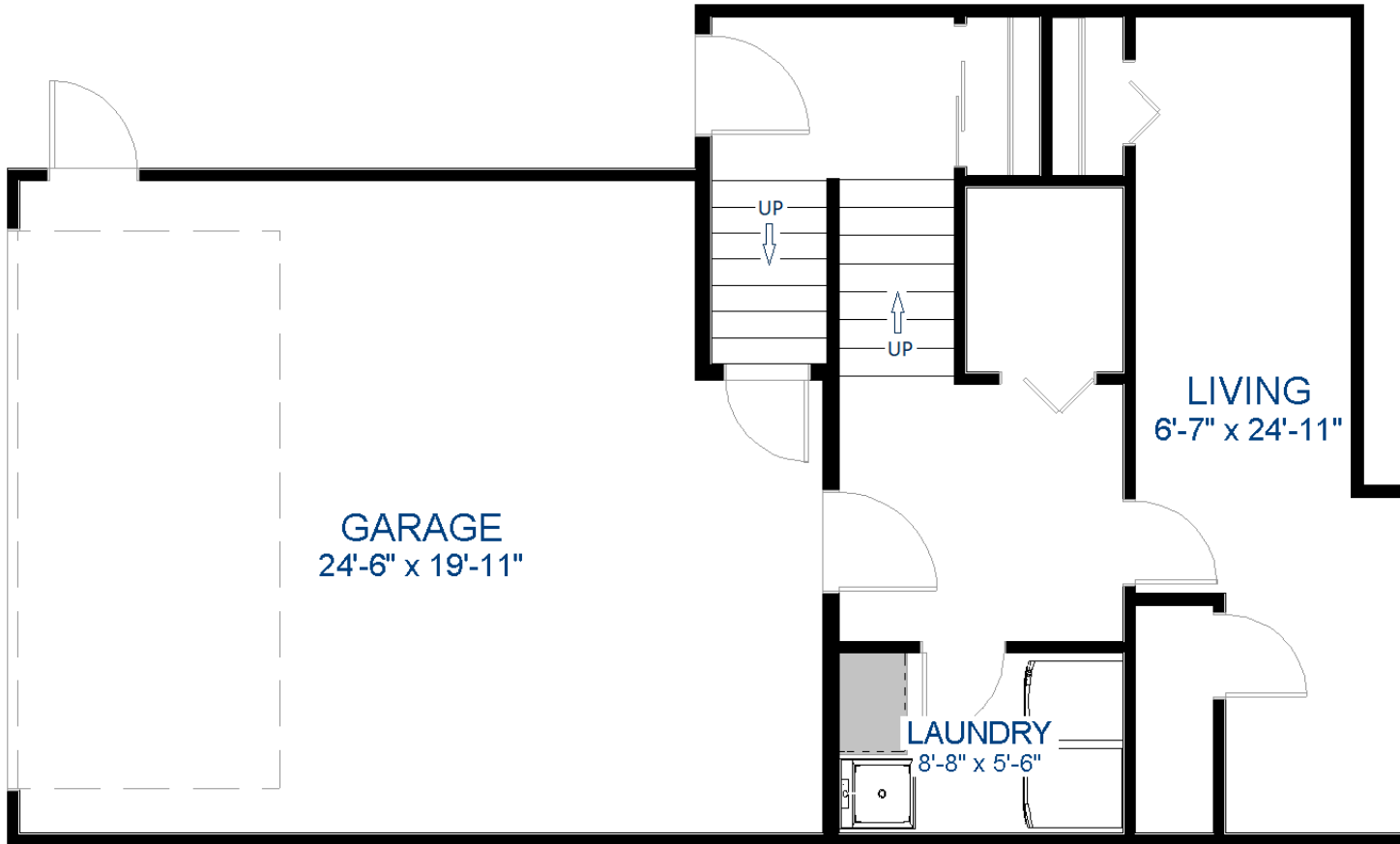
Phone: 778-688-8868
Email: scott@scottwtodd.com

26 Rivers Walk – 40632 Government Rd. – Squamish, BC

Living Area:

Upper Level: 886 sf.
Main Floor: 886 sf.
Lower Level: 481 sf.

Total: 2,253 sf.



LOWER LEVEL -Living Area
481 sq ft

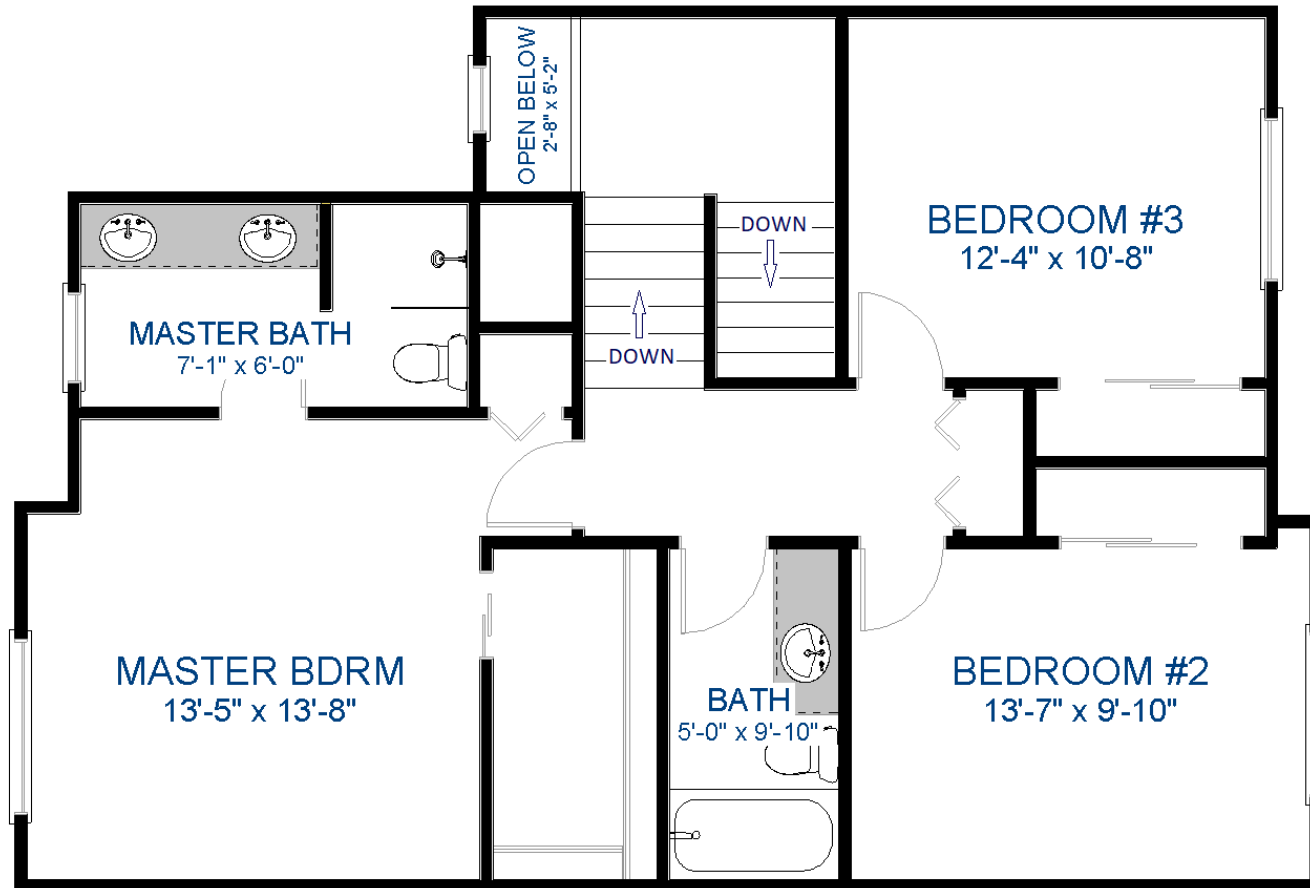
*Information contained in this floor plan is believed to be accurate, but not guaranteed. Square footage is approximate.
360° Interactive Tours - Floor Plans - Photography - Aerial Footage

26 Rivers Walk – 40632 Government Rd. – Squamish, BC

Living Area:

Upper Level: 886 sf.
Main Floor: 886 sf.
Lower Level: 481 sf.

Total: 2,253 sf.



UPPER LEVEL - Living Area
886 sq ft

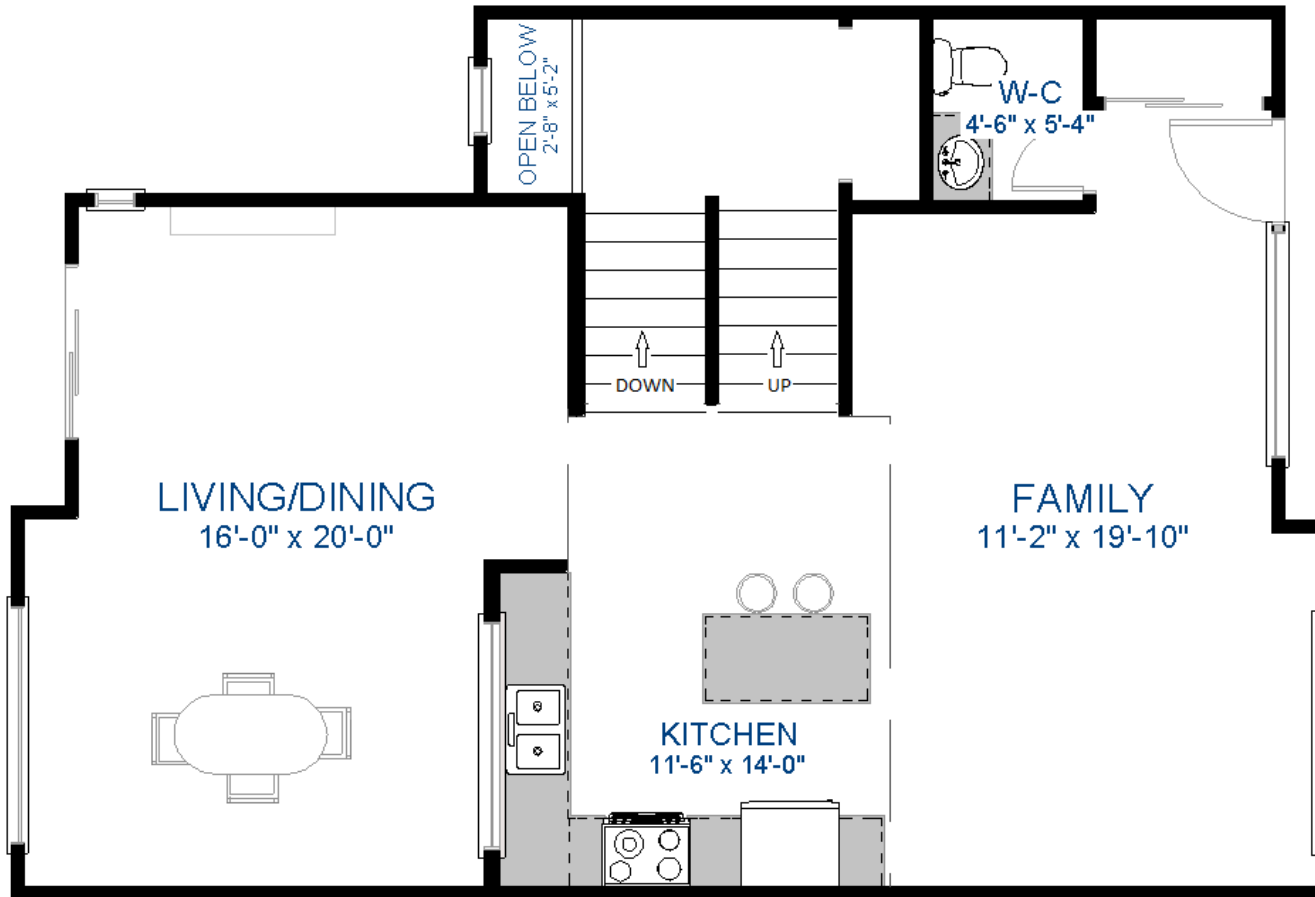
*Information contained in this floor plan is believed to be accurate, but not guaranteed. Square footage is approximate.
360° Interactive Tours - Floor Plans - Photography - Aerial Footage

26 Rivers Walk – 40632 Government Rd. – Squamish, BC

Living Area:

Upper Level: 886 sf.
Main Floor: 886 sf.
Lower Level: 481 sf.

Total: 2,253 sf.



MAIN LEVEL- Living Area
886 sq ft

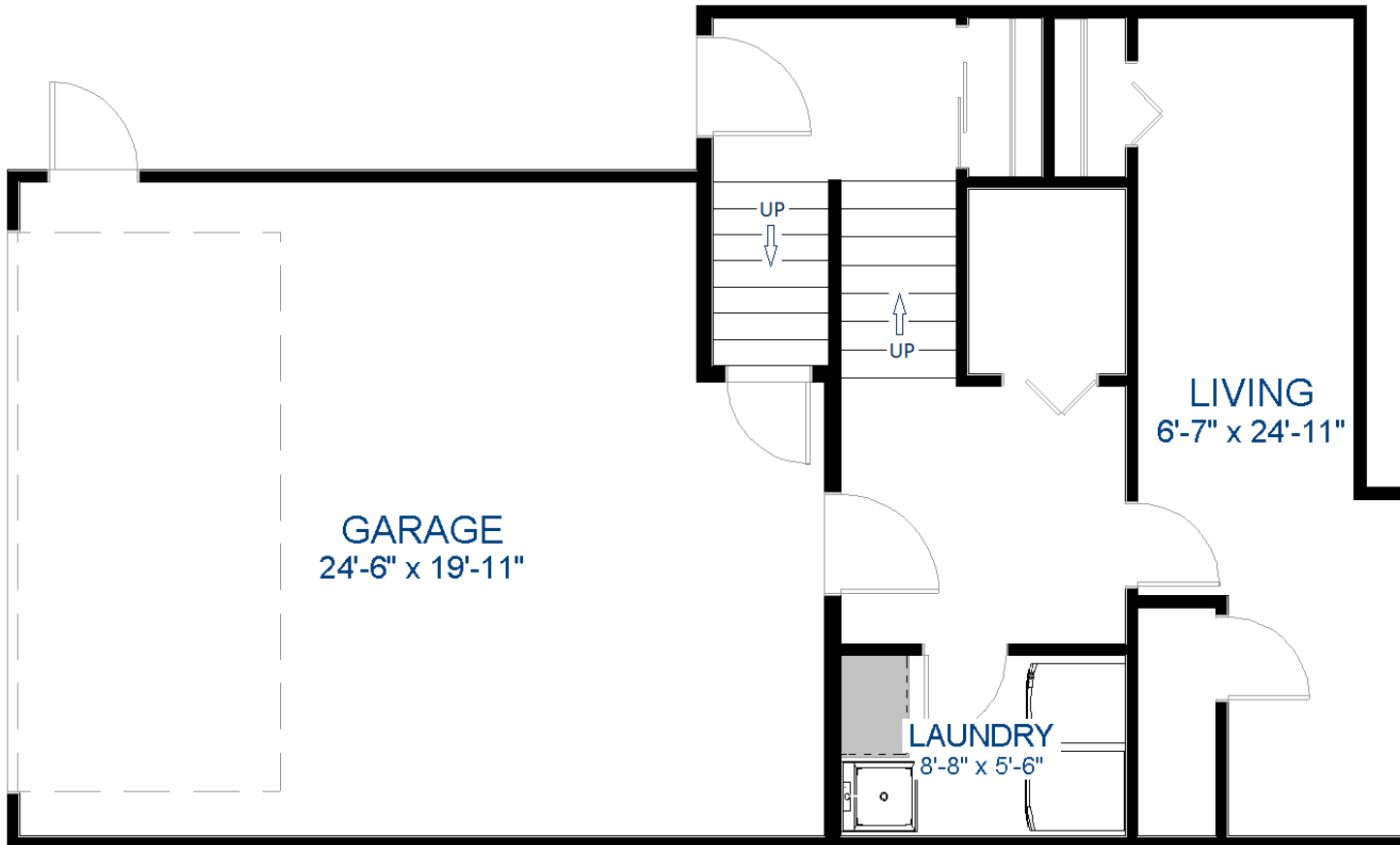
*Information contained in this floor plan is believed to be accurate, but not guaranteed. Square footage is approximate.
360° Interactive Tours - Floor Plans - Photography - Aerial Footage

26 Rivers Walk – 40632 Government Rd. – Squamish, BC

Living Area:

Upper Level: 886 sf.
Main Floor: 886 sf.
Lower Level: 481 sf.

Total: 2,253 sf.



LOWER LEVEL -Living Area
481 sq ft

*Information contained in this floor plan is believed to be accurate, but not guaranteed. Square footage is approximate.
360° Interactive Tours - Floor Plans - Photography - Aerial Footage