





Jumar captures stunning views on all sides. The building's design draws inspiration from the breathtaking landscape surrounding it; its shape directly mirrors the iconic Squamish Chief. The stylish 1- to 3-bedroom homes of Jumar are connected to secured parking and a complementary mix of shops and services that enrich your life.



We paid equally keen attention to Jumar's layout. Centralized courtyards maximize natural daylight, reflecting the openness of our outdoor environment and creating welcoming public spaces for you to relax in.

FEATURES



ARCHITECTURE MADE FOR SQUAMISH

- ◆ Architecture by award-winning **GBL Architects**
- ◆ Exterior finishes include cementitious grey and white panels, wood-like slabs, and perforated aluminum metal screens, built to withstand all seasons
- ◆ A central courtyard that features vibrant, rich landscaping, basalt boulders, stone benches, and a rock garden, all open to the fresh mountain air
- ◆ Expansive private balconies and terraces for each home

THROUGHOUT THE HOMES

- ◆ Interior design by **CHIL Interior Design**, offering a choice between the Chief and Tantalus schemes
- ◆ Highly functional interior layouts to maximize space for daily life
- ◆ Over-height ceilings create an airy space
- ◆ Subtly textured, wide-plank laminate flooring throughout
- ◆ Energy-efficient LED lighting throughout
- ◆ Heat Recovery Ventilation unit for efficient heating while maintaining air freshness for a healthy climate
- ◆ Roller blinds throughout for privacy and shade
- ◆ **Whirlpool®** front-load washer and dryer

MODERN, WELL-PLANNED KITCHENS

- ◆ Unique two-toned cabinets
- ◆ Under-cabinet continuous LED lighting
- ◆ **Caesarstone®** quartz countertops and backsplashes that are resistant to stains, scratches, and heat
- ◆ Single-bowl brushed stainless steel undermount sink with chrome **Riobel®** faucet
- ◆ **KitchenAid®** stainless steel appliance package
 - 30" stainless steel refrigerator, bottom freezer drawer, and interior water dispenser
 - 30" stainless steel 5-burner gas cooktop with continuous cast-iron grates
 - 30" stainless steel wall oven with Even-Heat True Convection and a temperature probe
 - 30" stainless steel hood fan with 400 CFM
 - Dishwasher with a third-level flat rack for utensils
 - 22" **Panasonic** microwave with trim kit

UPGRADE OPTIONS

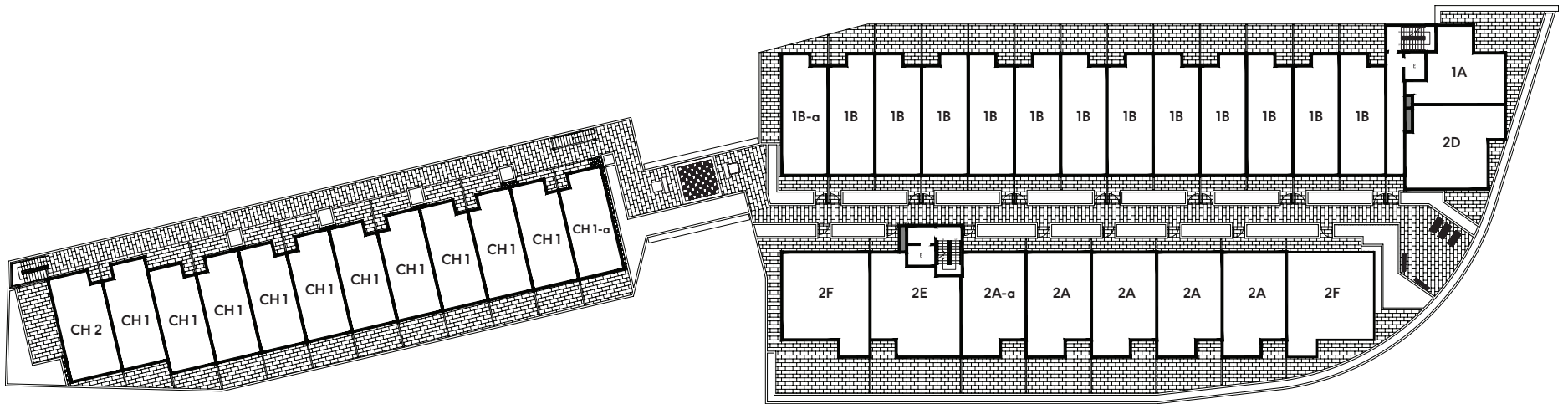
- ◆ Brick Wall - Ames brick feature wall
- ◆ Innovative Storage Wall System
- ◆ NuHeat - Heated bathroom floor with thermostat
- ◆ Integrated appliance package:
 - 29" **Liebherr®** integrated refrigerator and lower freezer
 - 24" **KitchenAid®** integrated dishwasher

BEAUTIFULLY DESIGNED BATHROOMS

- ◆ Porcelain tile throughout all bathrooms
- ◆ Convenient storage within medicine cabinetry
- ◆ Scratch-, stain-, and heat-resistant quartz **Caesarstone®** countertops
- ◆ Undermount porcelain sinks with chrome **Riobel®** faucets
- ◆ Chrome hardware throughout
- ◆ Deep alcove bathtub
- ◆ Frameless glass showers featuring both hand-held and rain **Riobel®** showerheads, with a shower niche

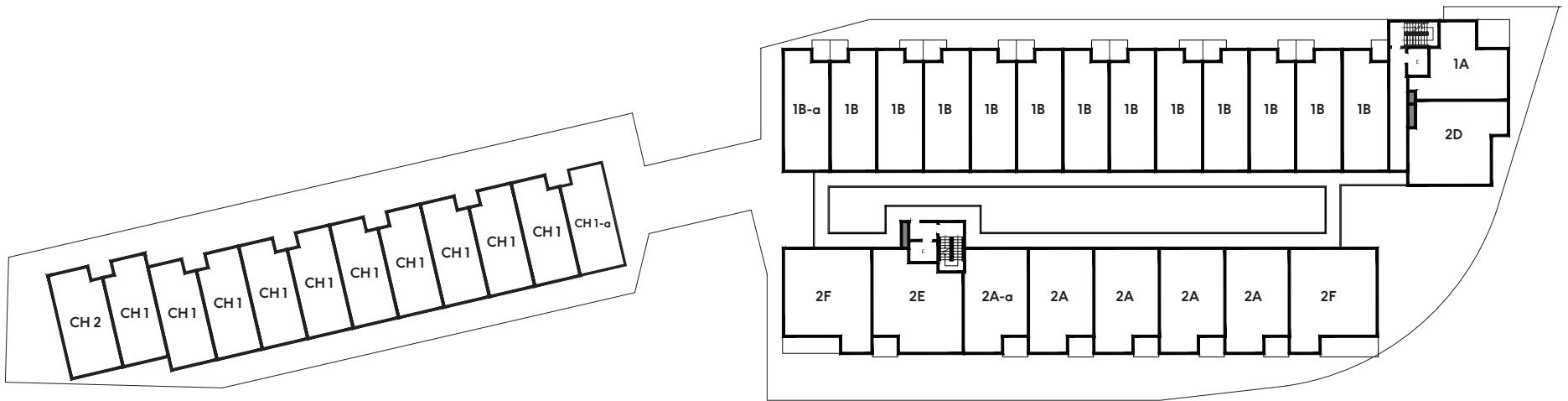
LIVE THE ADVENTURE

- ◆ Key fob access into all common areas and elevators
- ◆ A private, secured parking garage
- ◆ A dog and bike wash station with bike-tuning facilities
- ◆ Ample bike storage
- ◆ Secured storage space with every home
- ◆ Comprehensive Travelers 2-5-10 Year New Home Warranty
 - Two years for materials
 - Five years for the building envelope
 - Ten years for structural elements



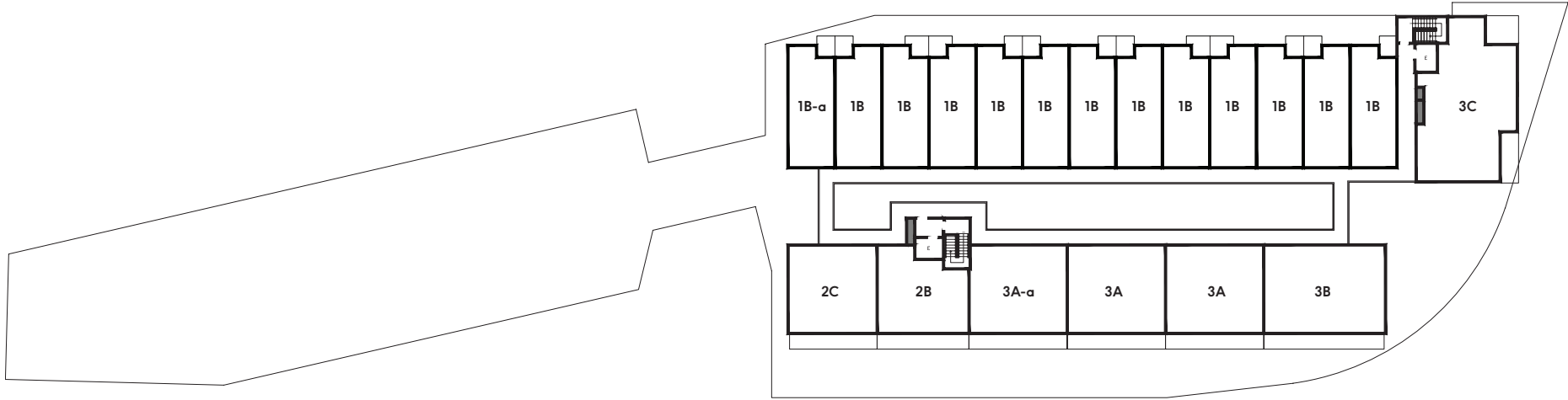
BUILDING PLAN

LEVEL 4



BUILDING PLAN

LEVEL 5 - 6



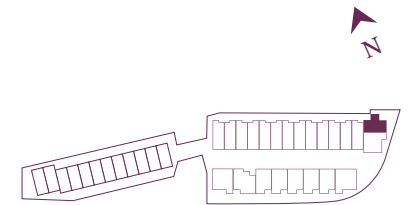
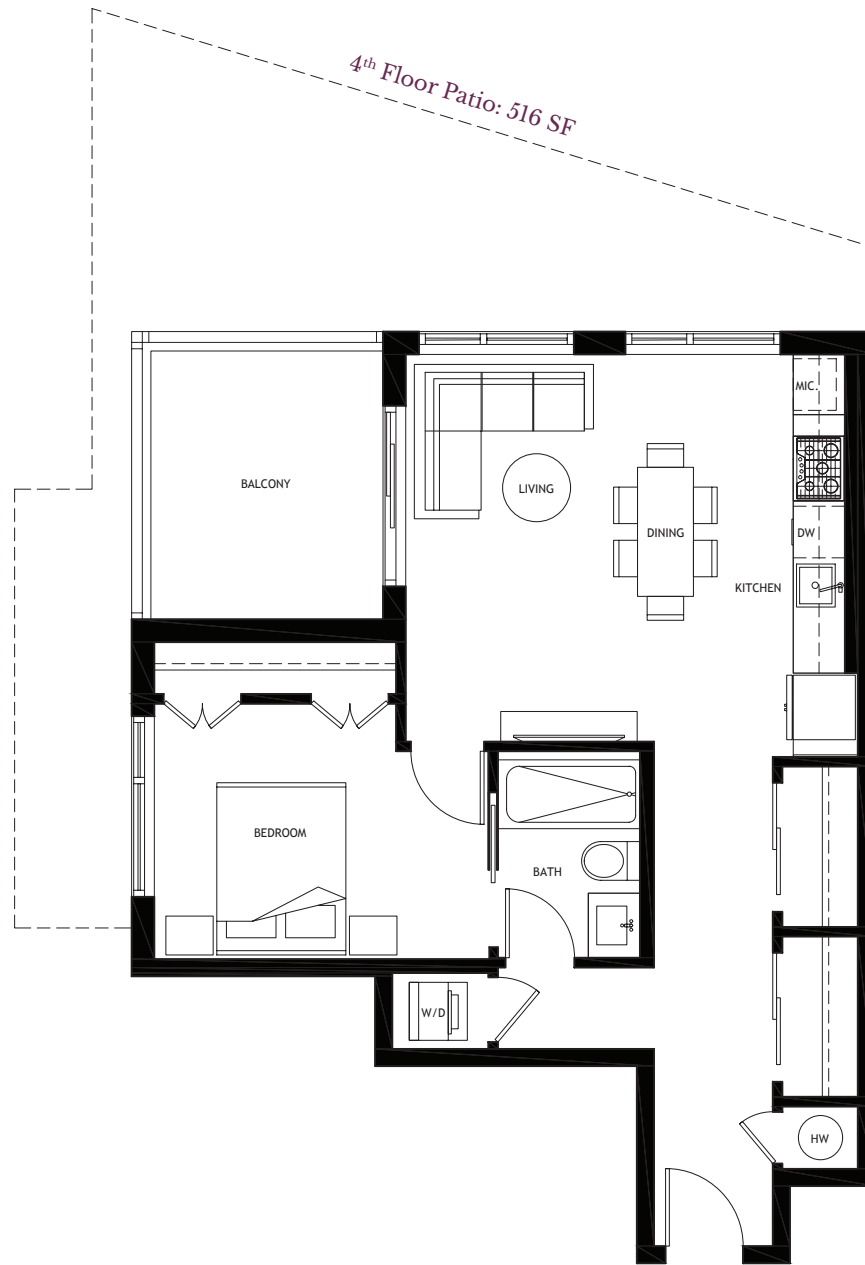
BUILDING PLAN

LEVEL 7

The developer reserves the right to modify or make substitutes to the building design, specifications, and floorplans, should they be necessary. Renderings, views, and layouts are for illustration purposes only. Sales by MLA Canada Realty. E.&O.E.

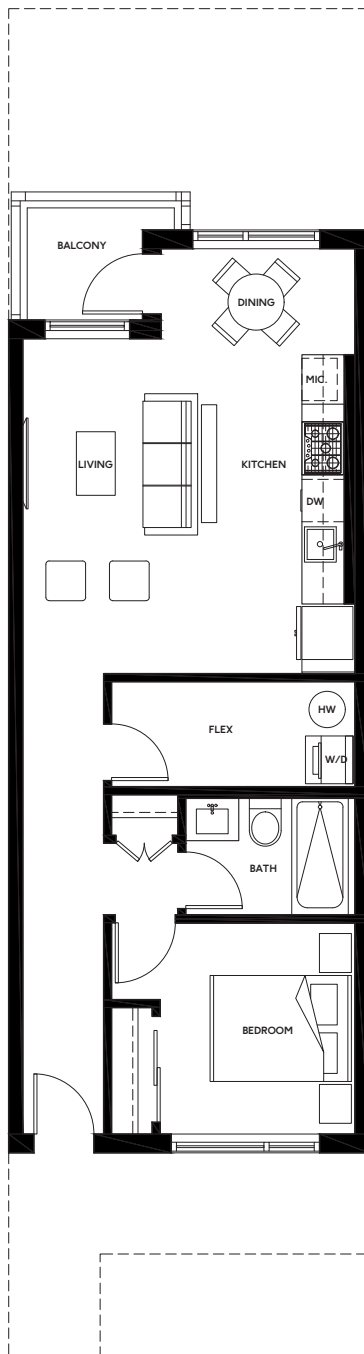
1A

1 BEDROOM
Interior: 702 – 709 SF
Exterior: 105 SF



4th – 6th Floor

4th Floor Patio: 253- 278 SF

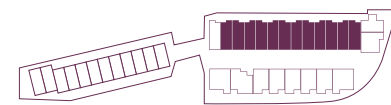


1B

1 BEDROOM + FLEX
Interior: 672 SF
Exterior: 27 - 44 SF



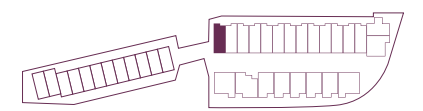
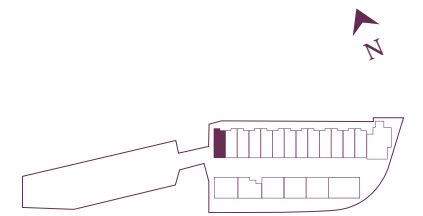
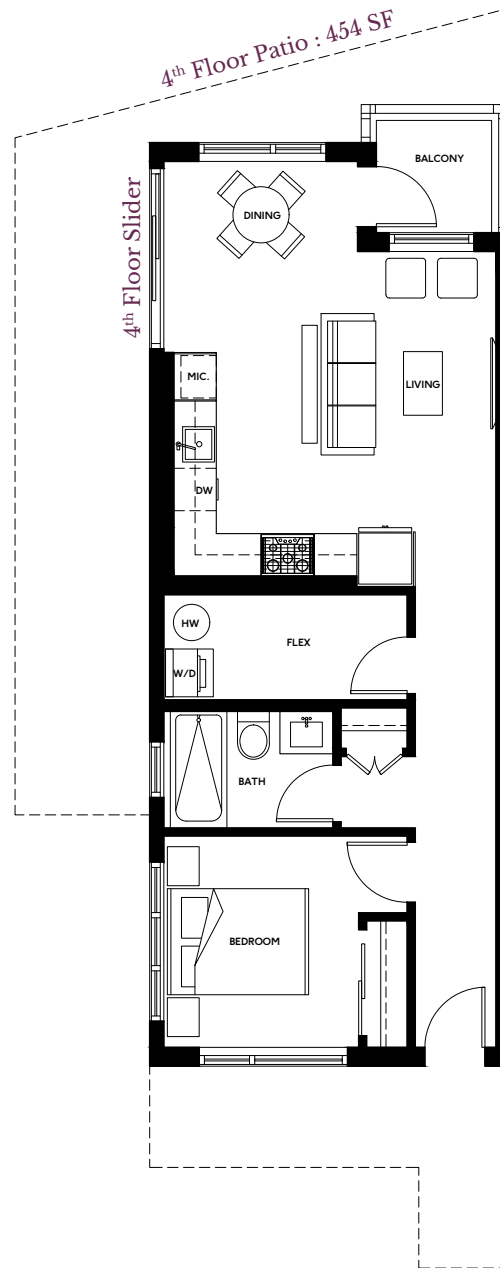
7th Floor



4th - 6th Floor

1B-a

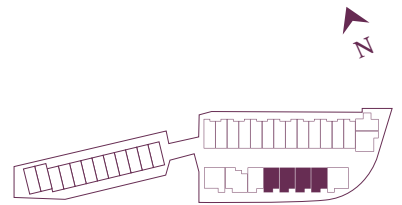
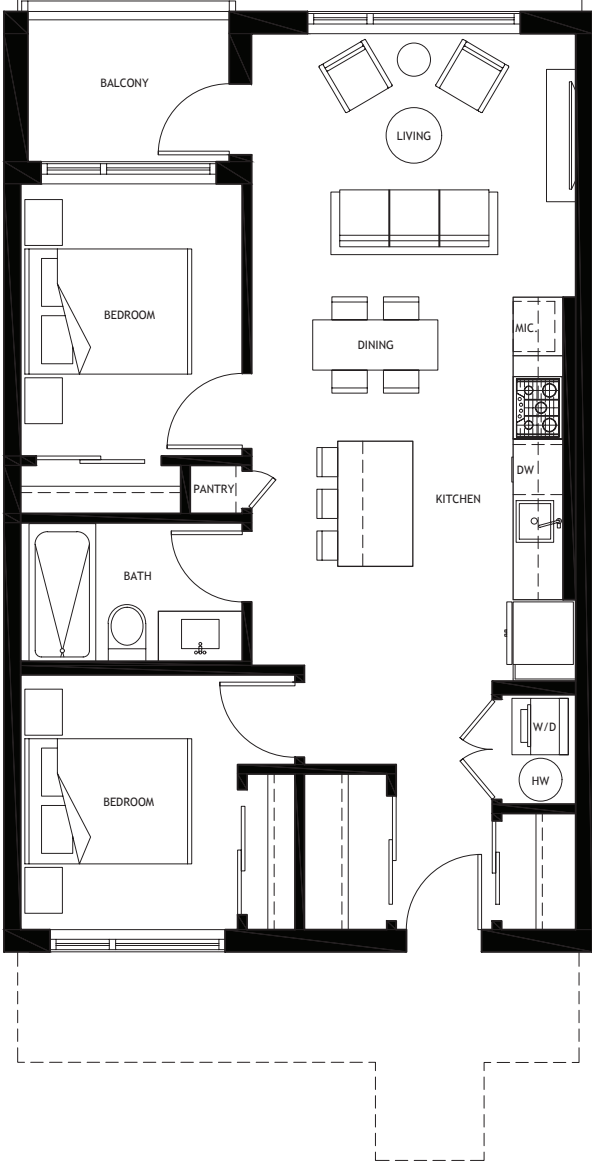
1 BEDROOM + FLEX
Interior: 673 SF
Exterior: 27 SF



4th Floor Patio: 355 - 443 SF

2A

2 BEDROOM
Interior: 788 SF
Exterior: 48 SF



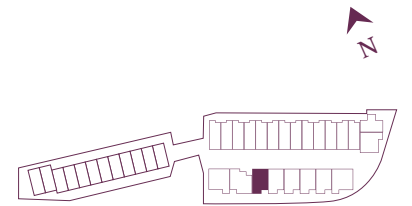
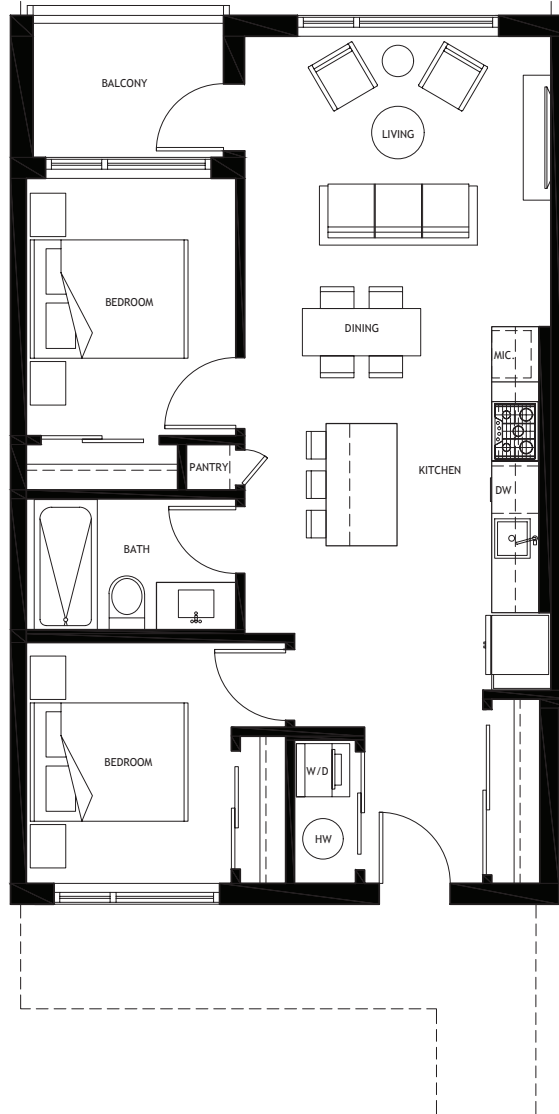
4th - 6th Floor

The developer reserves the right to modify or make substitutes to the building design, specifications, and floorplans, should they be necessary. Renderings, views, and layouts are for illustration purposes only. Sales by MLA Canada Realty. E.&O.E.

4th Floor Patio: 442 SF

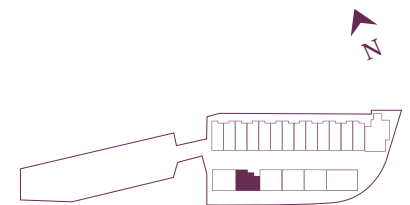
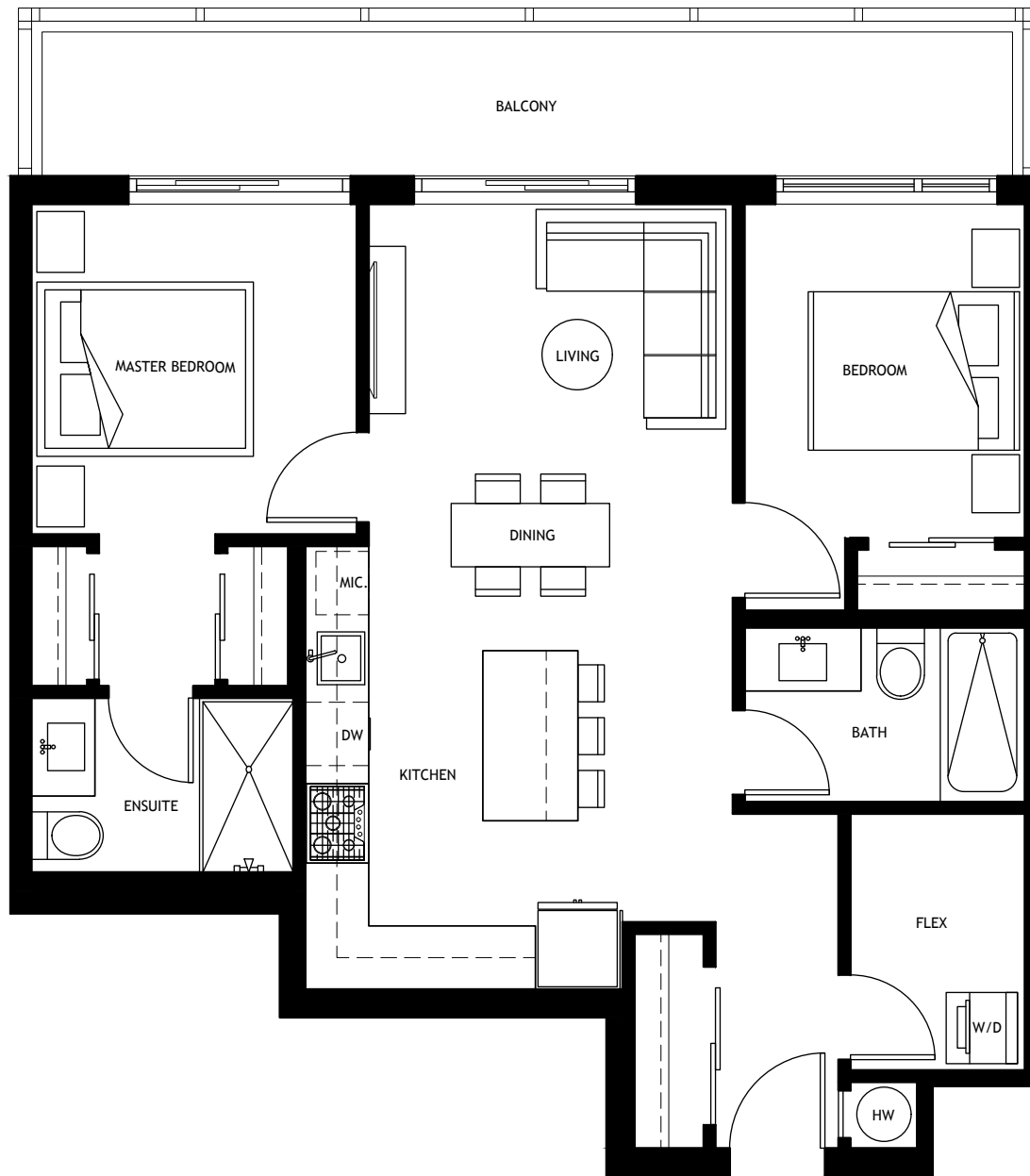
2A-a

2 BEDROOM
Interior: 786 SF
Exterior: 48 SF



2B

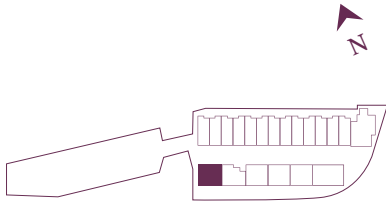
2 BEDROOM + FLEX
Interior: 867 SF
Exterior: 145 SF



7th Floor

2C

2 BEDROOM
Interior: 956 SF
Exterior: 140 SF

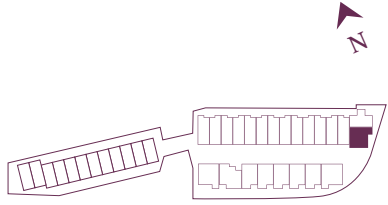


7th Floor

The developer reserves the right to modify or make substitutes to the building design, specifications, and floorplans, should they be necessary. Renderings, views, and layouts are for illustration purposes only. Sales by MLA Canada Realty. E.&O.E.

2D

2 BEDROOM
Interior: 920 – 935 SF
Exterior: 85 SF



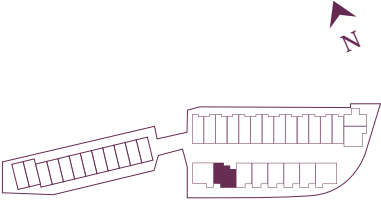
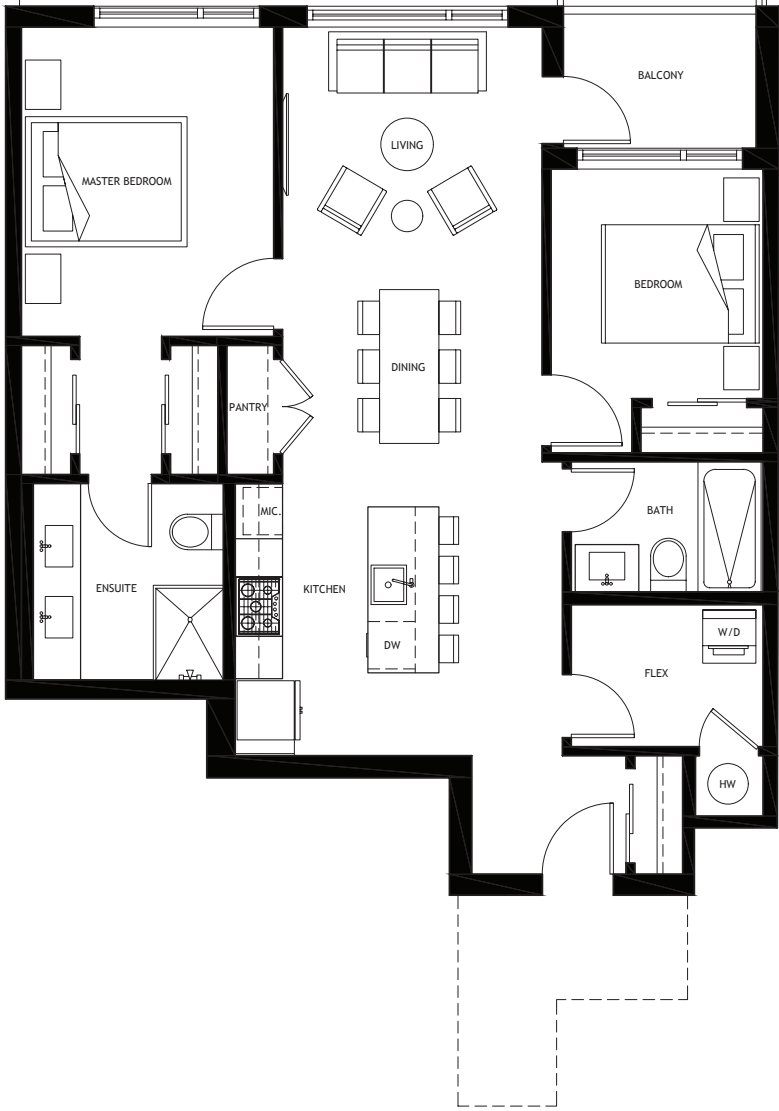
4th – 6th Floor

The developer reserves the right to modify or make substitutes to the building design, specifications, and floorplans, should they be necessary. Renderings, views, and layouts are for illustration purposes only. Sales by MLA Canada Realty. E.&O.E.

4th Floor Patio: 502 SF

2E

2 BEDROOM + FLEX
Interior: 1,005 SF
Exterior: 48 SF



4th - 6th Floor

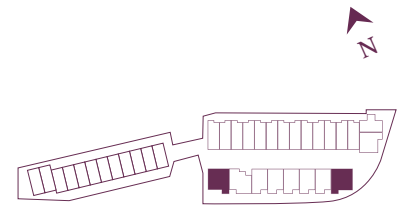
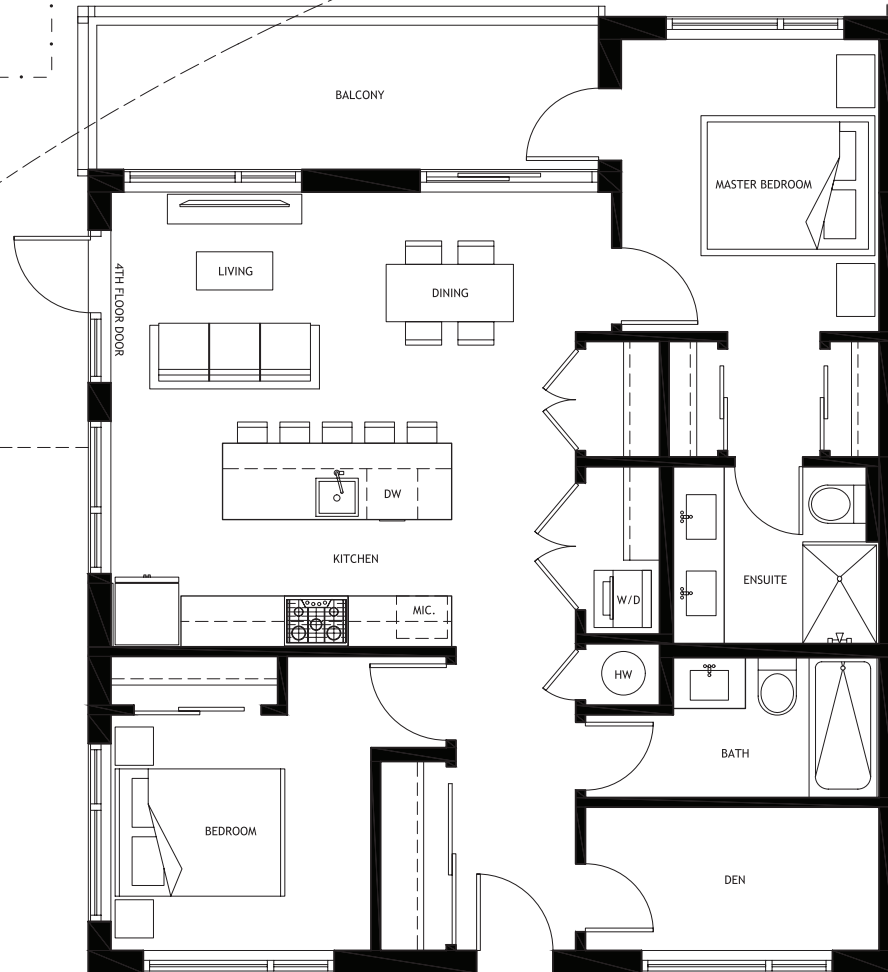
The developer reserves the right to modify or make substitutes to the building design, specifications, and floorplans, should they be necessary. Renderings, views, and layouts are for illustration purposes only. Sales by MLA Canada Realty. E.&O.E.

4th Floor Patio: 899 SF

2F

2 BEDROOM + DEN
Interior: 1,024 SF
Exterior: 110 SF

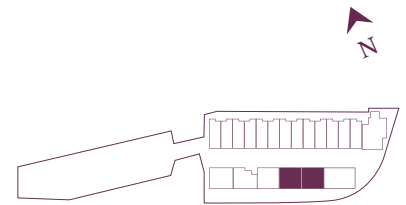
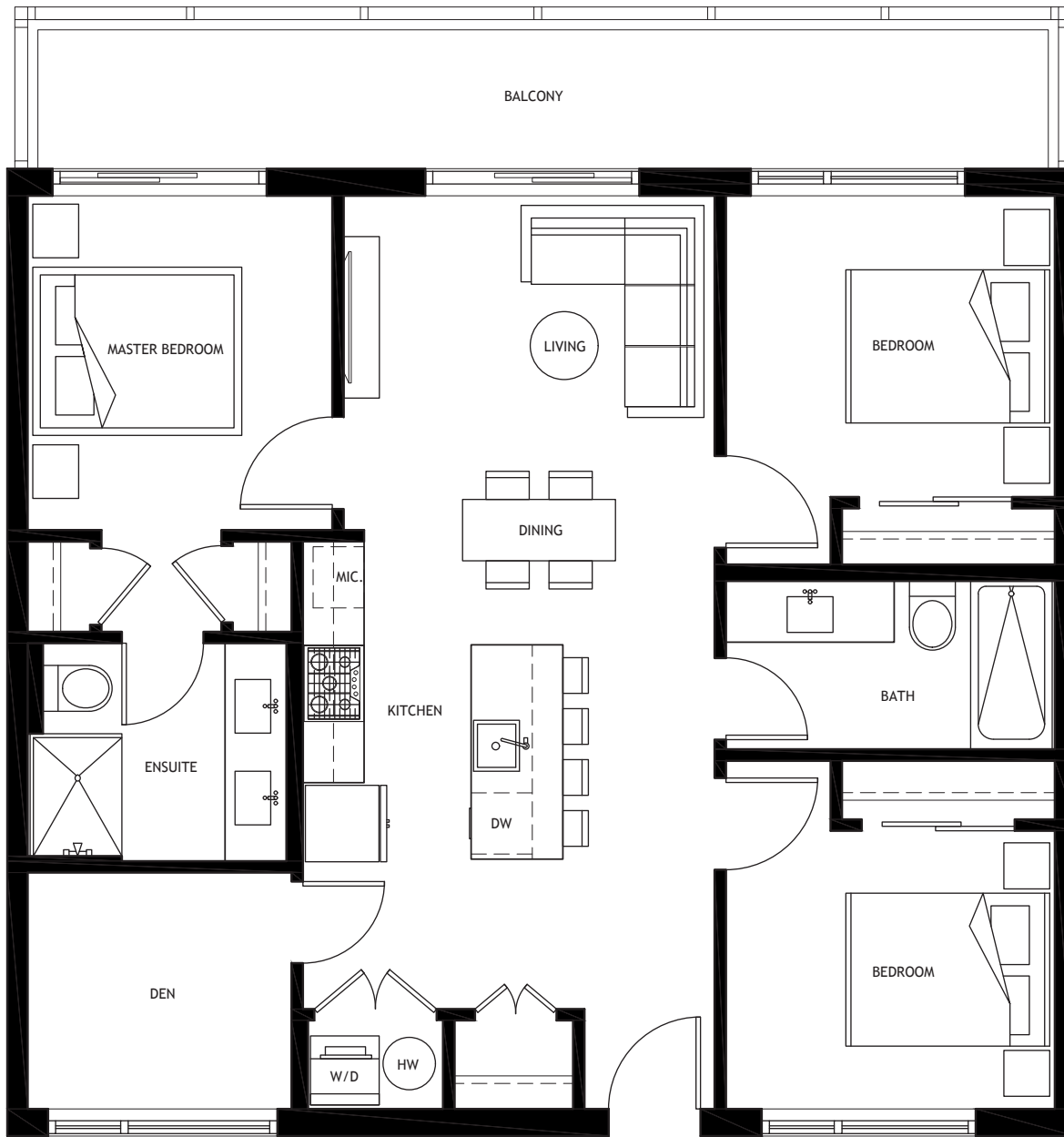
4th Floor Patio: 497 SF



4th - 6th Floor

3A

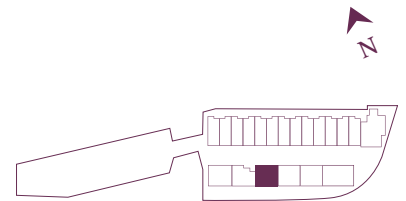
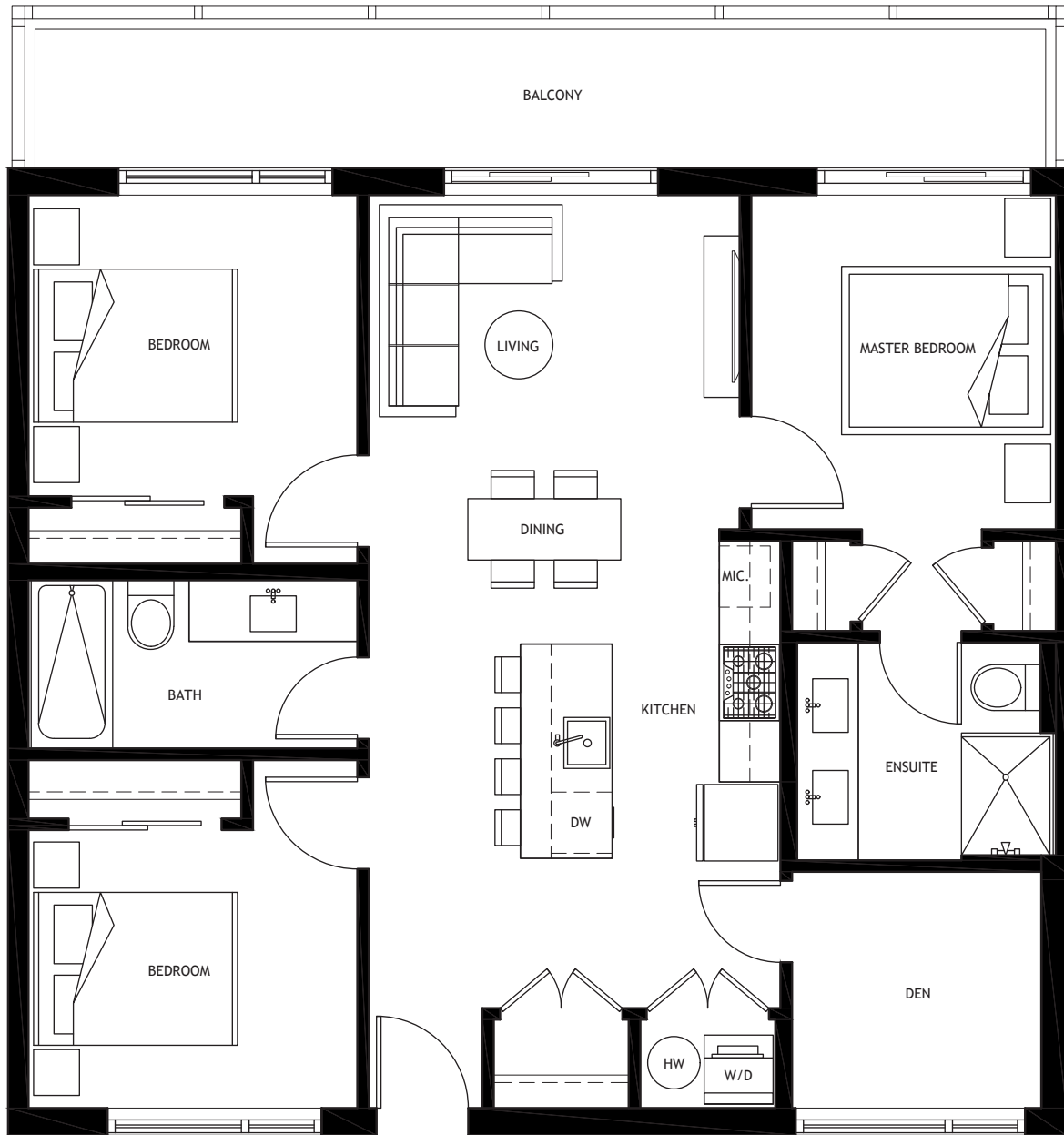
3 BEDROOM + DEN
Interior: 1,055 SF
Exterior 155 SF



7th Floor

3A-a

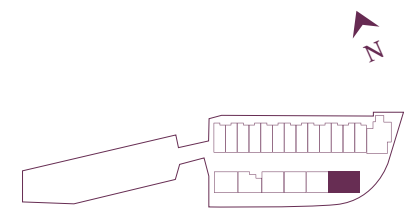
3 BEDROOM + DEN
Interior: 1,055 SF
Exterior: 155 SF



7th Floor

3B

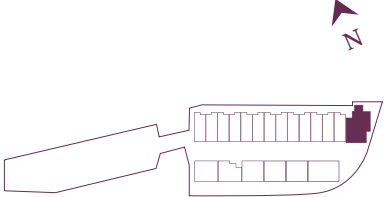
3 BEDROOM + DEN + FLEX
Interior: 1,308 SF
Exterior: 190 SF



7th Floor

3C

3 BEDROOM + FLEX
Interior: 1,622 SF
Exterior: 190 SF

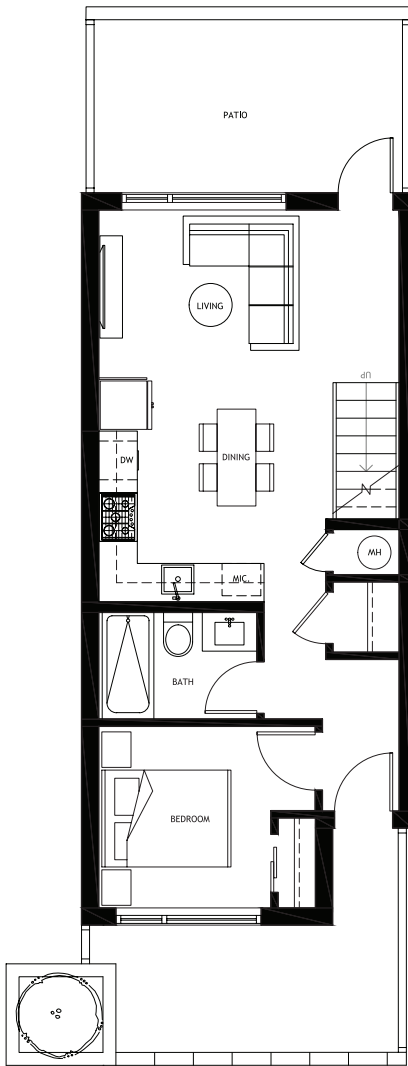


7th Floor

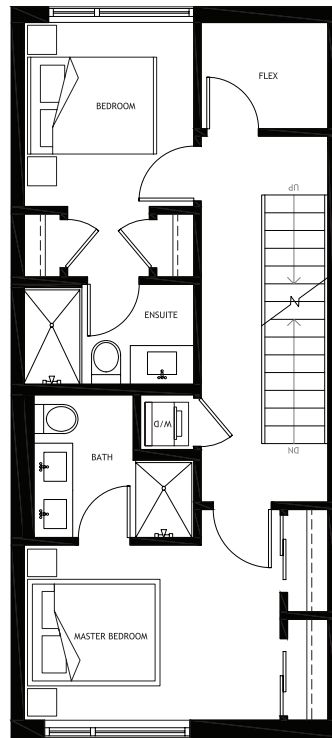
The developer reserves the right to modify or make substitutes to the building design, specifications, and floorplans, should they be necessary. Renderings, views, and layouts are for illustration purposes only. Sales by MLA Canada Realty. E.&O.E.

CH-1

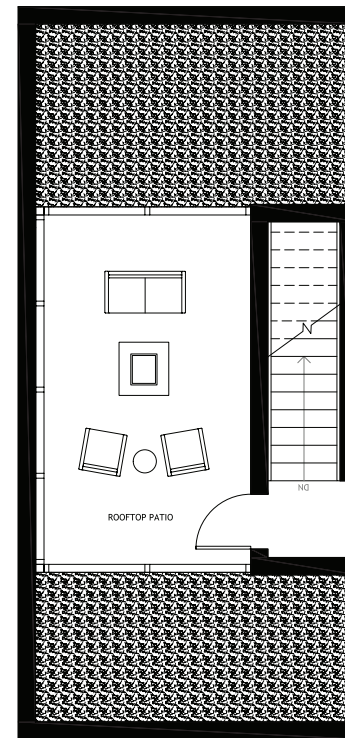
3 BEDROOM + FLEX
Interior: 1,270 SF
Exterior: 204 - 221 SF
Rooftop: 198 - 211 SF



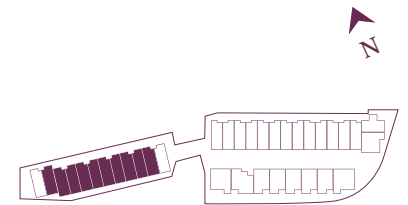
MAIN LEVEL



UPPER LEVEL



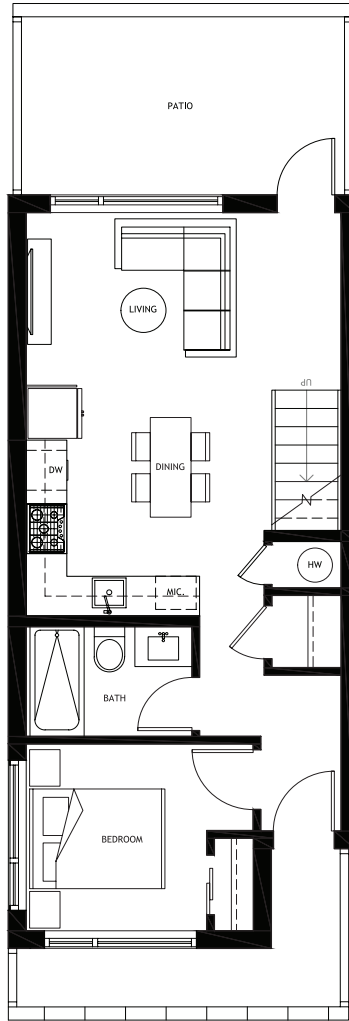
ROOFTOP



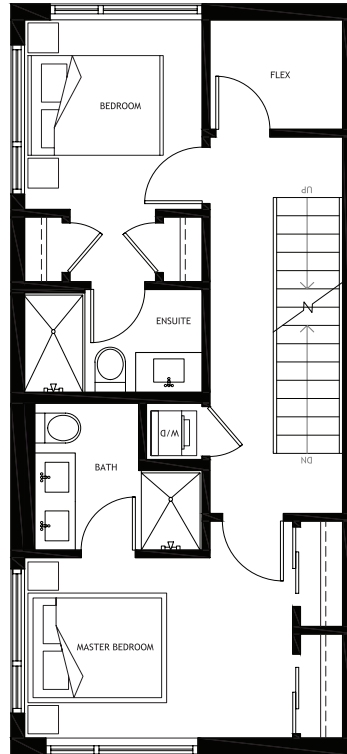
4th Floor

CH-1a

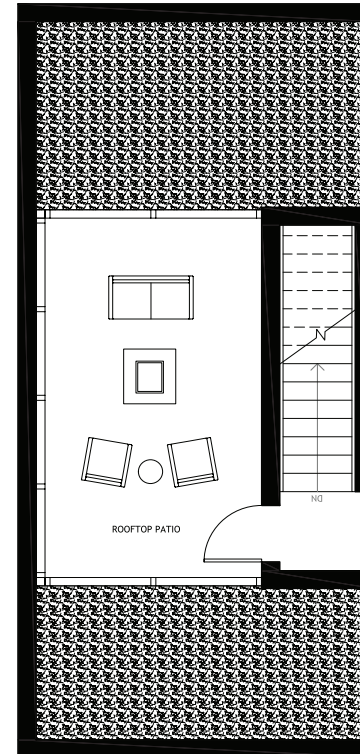
3 BEDROOM + FLEX
Interior: 1,271 SF
Exterior: 221 SF
Rooftop: 195 SF



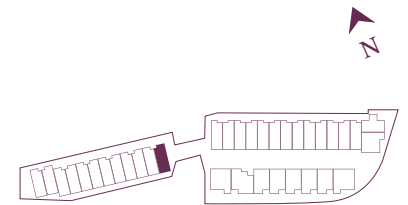
MAIN LEVEL



UPPER LEVEL



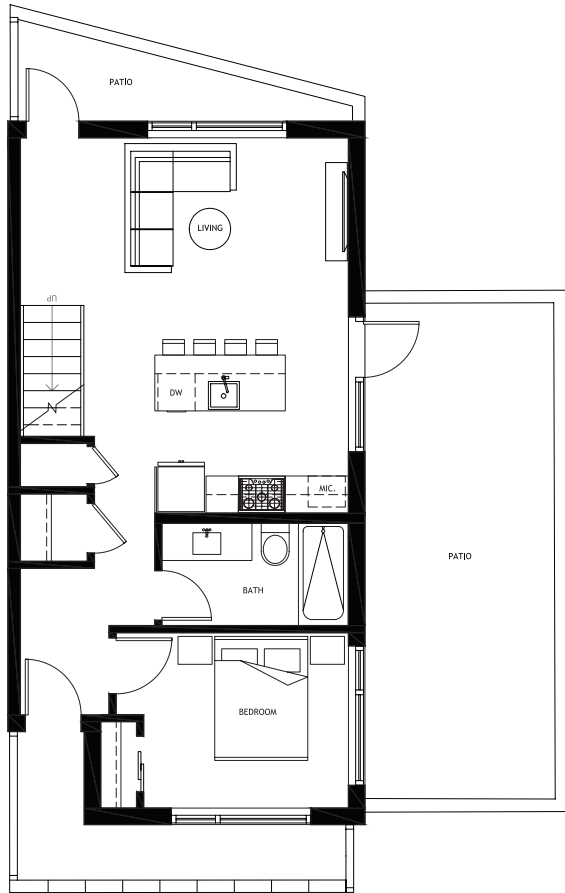
ROOFTOP



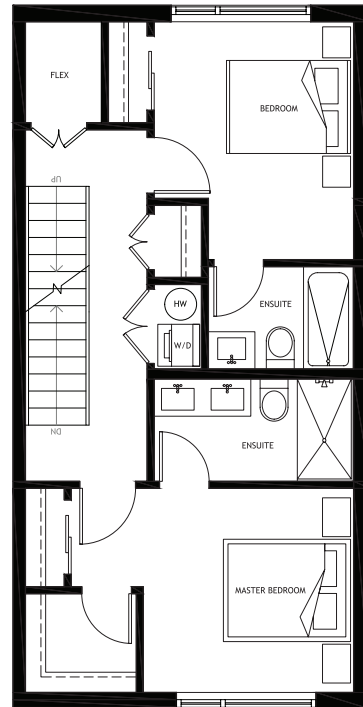
4th Floor

CH-2

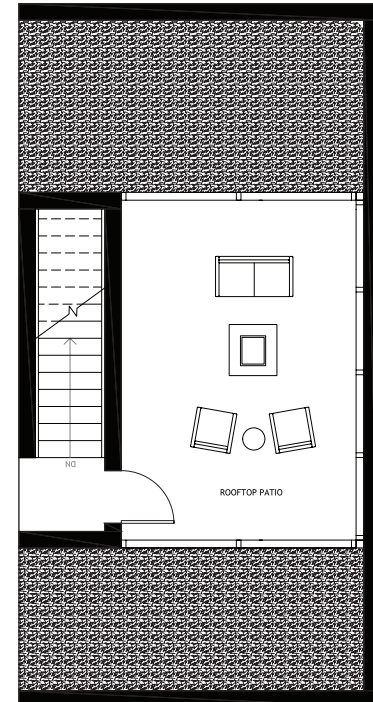
3 BEDROOM + FLEX
Interior: 1,428 SF
Exterior: 204 SF
Rooftop: 237 SF



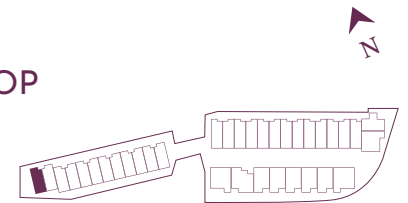
MAIN LEVEL



UPPER LEVEL



ROOFTOP



4th Floor