

JENNIFER & LEANNE

AT HOME IN SOUTH DELTA

Jennifer McIver 778-778-5078 | Leanne Lionello 604-209-5294
 jennifer@jennifermciver.com | www.jenniferandleanne.com | leanne@leannelionello.com

RE/MAX Progroup Realty | 5360 12 Avenue, Delta, B.C. V4M 2B3 | Office: 604.943.8080 | Each Office Independently Owned and Operated

1138 Fairway Views Wynd,
Delta, B.C.

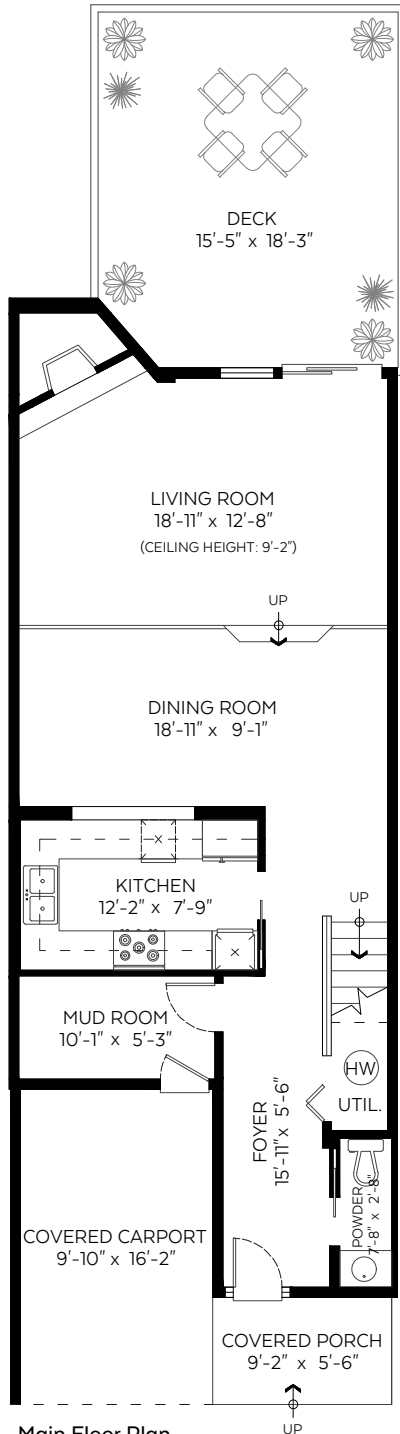
Main Floor: 838 sq.ft.
 Upper Floor: 1,051 sq.ft.
 Top Floor: 497 sq.ft.

Total: 2,386 sq.ft.

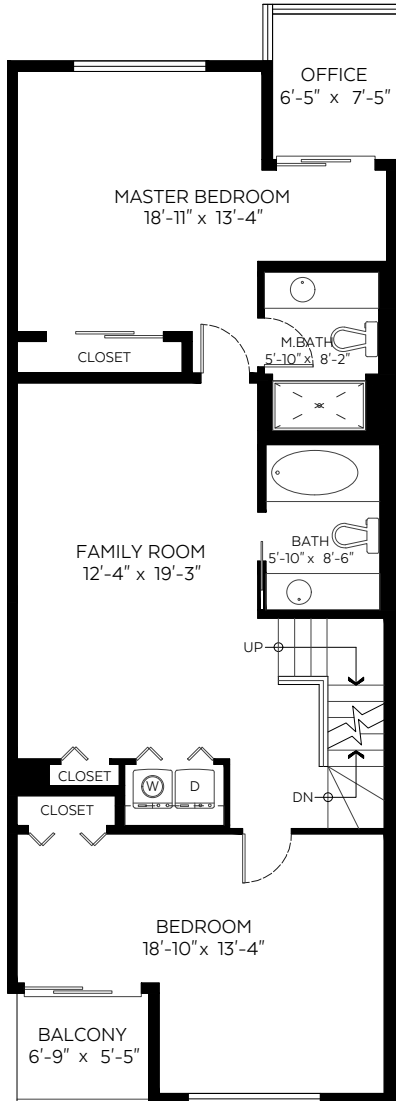
Restricted Head Room: 58 sq.ft.
 Open to Below: 118 sq.ft.

Auxiliary Area

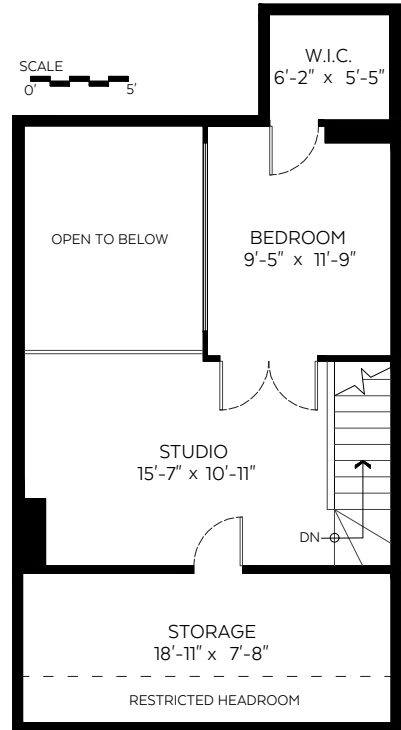
Covered Carport: 159 sq.ft.
 Covered Porch: 50 sq.ft.
 Deck: 275 sq.ft.
 Balcony: 37 sq.ft.



Main Floor Plan
 Floor Area: 838 sq.ft.
 Ceiling Height: 8 ft unless noted



Upper Floor Plan
 Floor Area: 1,051 sq.ft.
 Ceiling peak @ 22'-3"



Top Floor Plan
 Floor Area: 497 sq.ft.
 Ceiling peak @ 13'-6"

Measured on: Jan 14, 2019



The floor plan is not suitable for architectural/construction and is covered under E&O. © Excelsior Measuring Inc. 2019. All rights reserved for Excelsior Measuring Inc. Users shall not publish and distribute this material (in whole or in part) and/or incorporate it in other works in any form.



Booked on
the Pixlink App™

