

CHRIS BARRON

REAL ESTATE



4505 Woodwinds Cres
Uplands



Single family home in Sunshine Ridge, Uplands, Nanaimo



3 bed, 2 bath, 1358sqft level entry rancher

4505 Woodwinds Crescent

Total Finished Area - 1358 Sq Ft

Chris Barron



Property Matrix

1358 Sq Ft

Total Finished

1358 Sq Ft

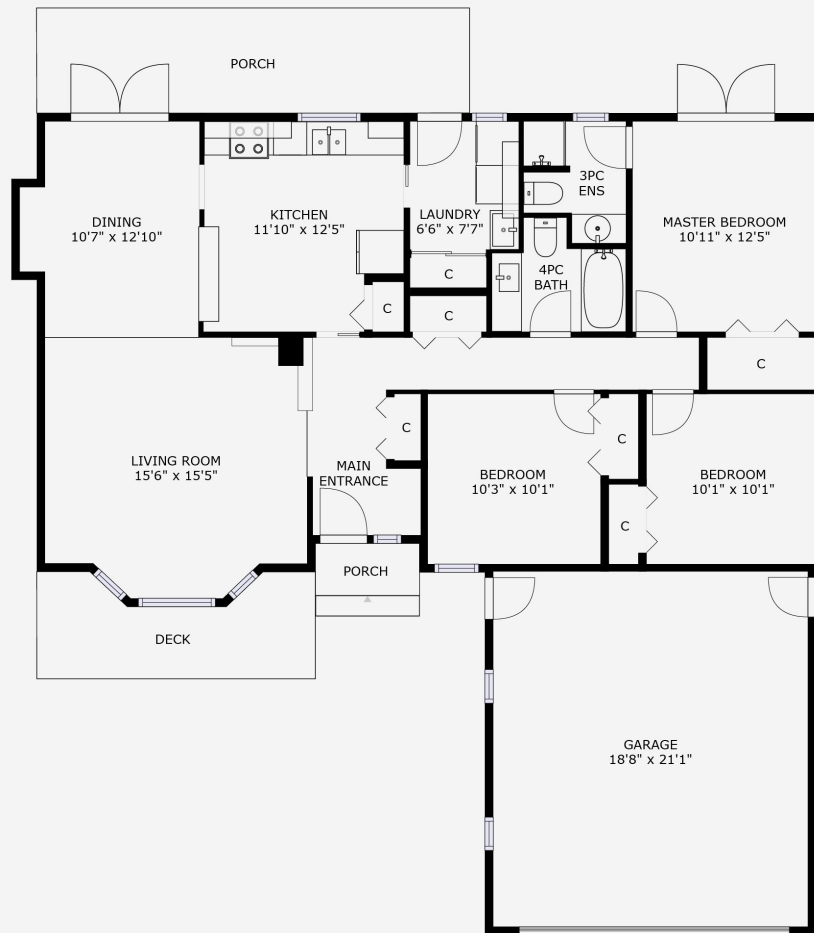
Main Level

448 Sq Ft

Garage



All measurements are approximate and should be verified by the Buyer if important.



3 Bed, 2 Bath Single Family Home

Located on a quiet street in the Sunshine Ridge neighbourhood of Uplands, this home is close to shopping, schools, and recreation. Step inside and discover this well laid out home. The sunken living room with gas fireplace greets you as you walk in the door. The large kitchen is a great feature of the home and is complimented nicely with the separate dining room making entertaining very easy. The home also has 2 good sized bedrooms and a master suite, complete with 3 piece ensuite, that also has its own garden door opening to the backyard. The backyard is very private, backing on to a ravine, neighbors only on two sides with a rustic garden shed along the back fence. It is already wired for a hot tub so the hard part is done there. The driveway has been widened to allow for easier storage of an RV or boat and still allow access into the two-car garage. Call today for more information and to schedule a private showing!

FEATURES

Style:	Rancher
Living Area:	1358 sqft
Bedrooms:	3
Bathrooms:	2
Taxes:	\$3135 (2019)
Year Built:	1985

AMENITIES

Garden Area, Wkshop-Detached, Thermal Windows, Main Level Entry, Sprinkler System, Fully Fenced



Fully Fenced, private backyard, and it's already wired for a hot tub!



Chris Barron

250-947-5921

chris@chrisbarron.ca

ChrisBarron.ca



Parksville Qualicum Beach Realty

173 Island W Hwy

Parksville, BC V9P 2H1