

# Welcome Home to

2406-930 16 Ave SW

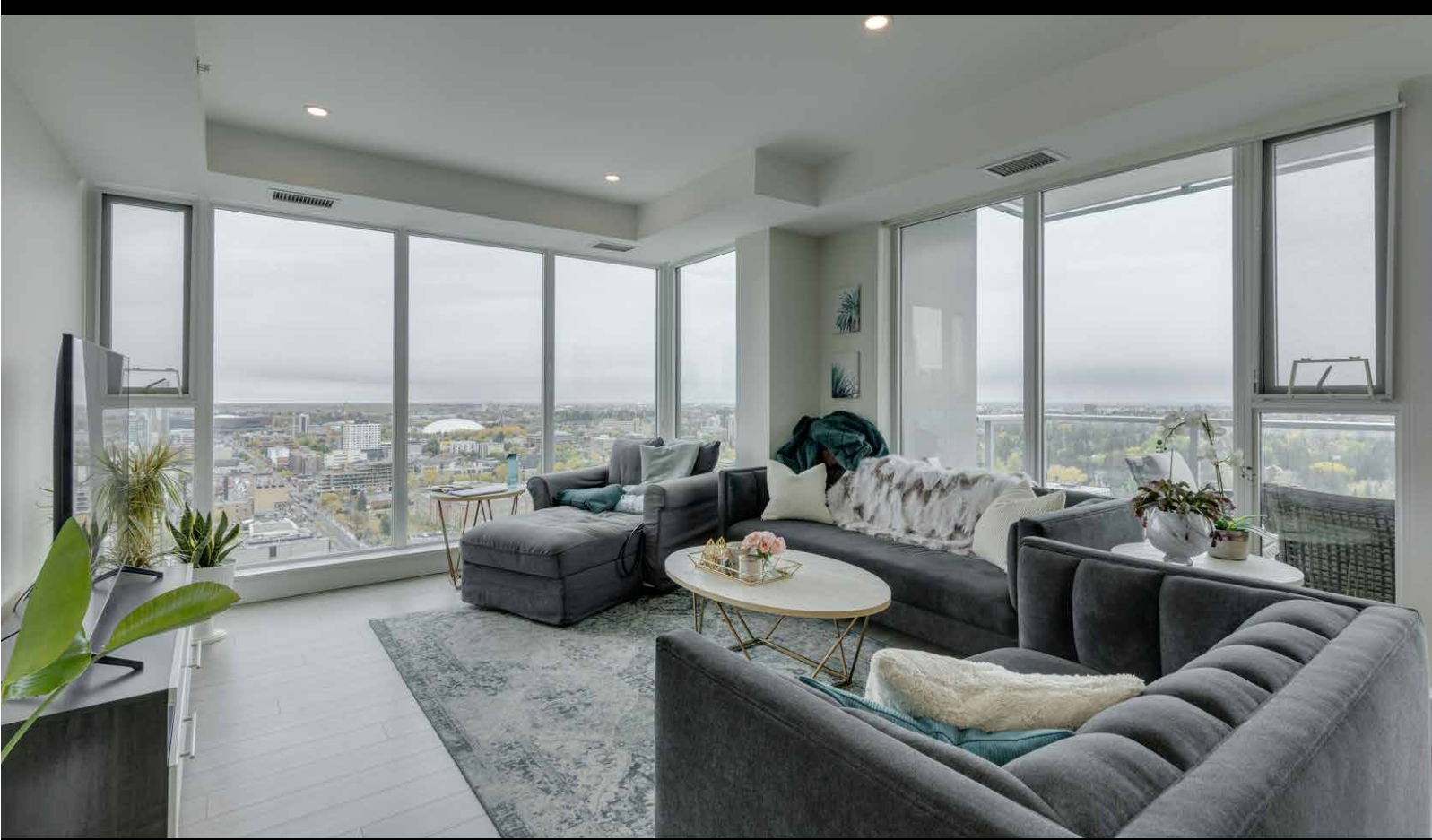
**Chris Zaharko**  
Associate

Phone: 403-874-0424  
www.zaharko.com - chris@zaharko.com

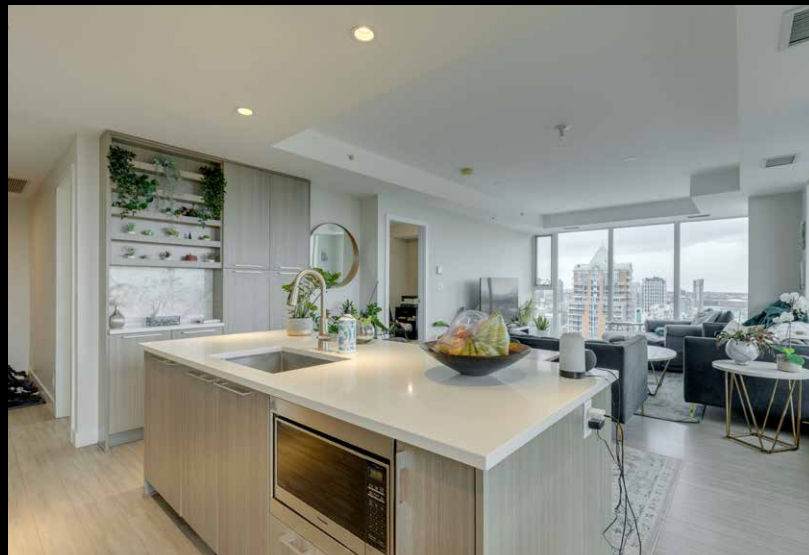
**ROYAL LEPAGE**  
**Benchmark**  
INDEPENDENTLY OWNED AND OPERATED, BROKER

*Top 1% Nationally*





Welcome Home to The Royal! This 2 bedroom south/south east facing corner unit is perfect for anyone looking for all the perks and convenience of inner city living. Floor to ceiling windows throughout this home flood the living spaces with natural light and provide amazing downtown and city views. Opening to the living and dining areas, the well-appointed kitchen has been equipped with a gas range, integrated refrigerator, built-in shelving and an 8' quartz island with breakfast bar. The nice sized south facing balcony is the perfect place to relax and entertain. The primary bedroom has a walk-in closet and 4 pc ensuite with double vanity and walk-in shower. Adding privacy, the 2nd bedroom and 4 pc main bath are located on the opposite side of the unit. Enjoy the convenient full sized in-suite laundry and comfort of central air. The amenities at The Royal are amazing bar none – residents enjoy the 10,000 sq ft Club Royal including a fully equipped fitness centre, squash court & sauna, private dining room with gourmet kitchen & resident's lounge, a beautiful garden terrace with barbeques, fire tables as well as 24 hr concierge service. Included is assigned heated, underground parking and an assigned storage locker. Located 1 block off lively 17th Ave SW where residents enjoy bars, restaurants and shoppes and conveniently attached to Canadian Tire and Save-On Foods. Walking distance to Downtown and all the amenities of Mount Royal Village and Mount Royal West. Enjoy easy access to transit, 17th Ave SW, 14th St, and the MNP Community & Sport Centre.



Chris Zaharko

Phone: 403-874-0424

[www.zaharko.com](http://www.zaharko.com)

[chris@zaharko.com](mailto:chris@zaharko.com)

MLS:	A2262135
Community:	Beltline
Size:	929.88 sq ft
Style:	High Rise Apartment
Year Built:	2019
Taxes:	\$4,221.00/2025
Condo Fee:	\$880.00/Monthly
Parking:	Assigned, Parkade, Stall, Underground, Total: 1

This document is used for advertising & general information only. Although the information contained within is from sources believed to be reliable, no warranty or representation is made as to its warranties of content, accuracy, and reliability, with all information contained herein being subject to errors, omissions, conditions, withdrawal, or other changes without notice. Any interested party should undertake their own inquiries as to the accuracy of the information.