

Welcome Home to

241 Hidden Creek Blvd NW



Chris Zaharko
Associate

ROYAL LEPAGE
Benchmark
INDEPENDENTLY OWNED AND OPERATED, BROKER



Phone: 403-874-0424
www.zaharko.com - chris@zaharko.com

Top 1% Nationally



Only 2nd time on the market, this 2 storey walk-out home is ready for you to make it your own! Nice sized family home backing onto a natural reserve. Great ravine views from this bright and open main floor with the kitchen offering a center island with breakfast bar overlooking the dining area and living room with gas fireplace. Stairs off the back deck provide easy access to backyard with gated access to the ravine perfect for dog walking and sledding in the winter! On the upper level you will find a bonus room with attached den and two bedrooms with jack & jill ensuite. The master suite comes complete with a walk-in closet and 5 pc ensuite with jetted tub and separate shower. The oversized double attached garage has a separate workshop area. Commuting is easy with transit access steps from your front door. Walk to the park, church and amenities at The Gates of Panorama. Minutes to schools, shopping and County Hills Golf Club. Easy access to Stoney Tr NW.

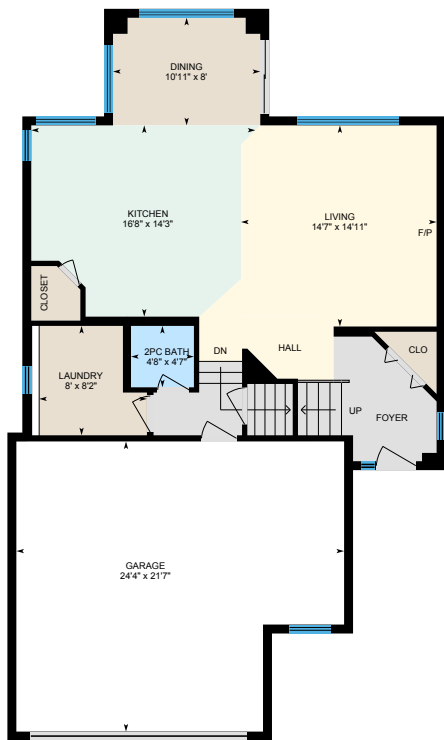




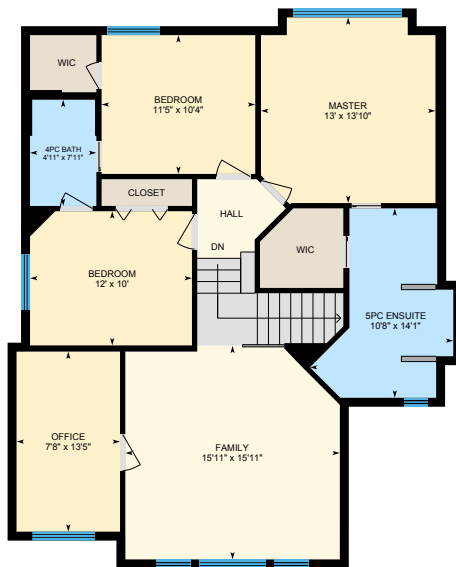
MLS: C4293548
Year Built: 2000
Style: 2 Storey
Total SqFt: 1,894
Taxes (2019): \$3,756
Parking: 4/Double Garage Attached
Features: Balcony, Deck, Vaulted Ceiling

Living Room:	14'7"X14'11"	M
Kitchen:	16'8"X14'3'	M
Dining Room:	10'11"X8'0"	M
Master Bed:	13'0"X13'10"	U
Family Room:	15'11"X15'11"	U
Bedroom:	12'0"X10'0"	U
Bedroom:	11'5"X10'4"	U
Office	7'8"X13'5"	U

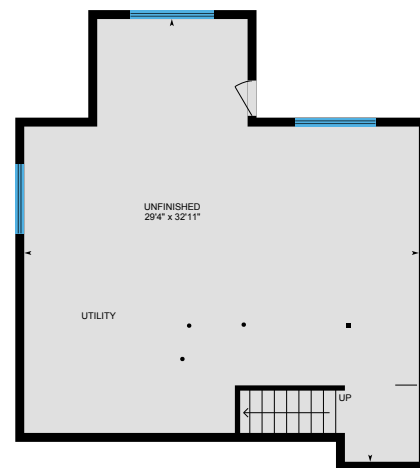
403-874-0424
www.zaharko.com
chris@zaharko.com



Main Floor



Upper Floor



Basement



Chris Zaharko
Associate

ROYAL LEPAGE
Benchmark
INDEPENDENTLY OWNED AND OPERATED, BROKER



Phone: 403-874-0424
www.zaharko.com - chris@zaharko.com

Top 1% Nationally