

THE SKY'S THE LIMIT

Calgary's Architectural Masterpiece

CANADA : ALBERTA : CALGARY





This new home by Thomas Debecki is deliciously modern, and is finished with chic interior design by Suzanne Ross. Situated in lower Mount Royal and close to 17th avenue, the house resides in one of Calgary's most desired locations.

From the front, the house is tall and striking, featuring a dark facade that contrasts effectively with wood paneling, and glass windows reflecting the Calgary skyline. The effect creates a dark and intriguing exterior, seemingly antithetical to the light and airy design within. Each reflect a separate personality of this modern masterpiece, and the contrast gives the effect of entering a new world through each pass of the front door.

Natural light floods the interior and is creatively incorporated into the design of the home. With extensive floor-to-ceiling windows and a rooftop pyramid atrium, this house is at once airy and inviting.

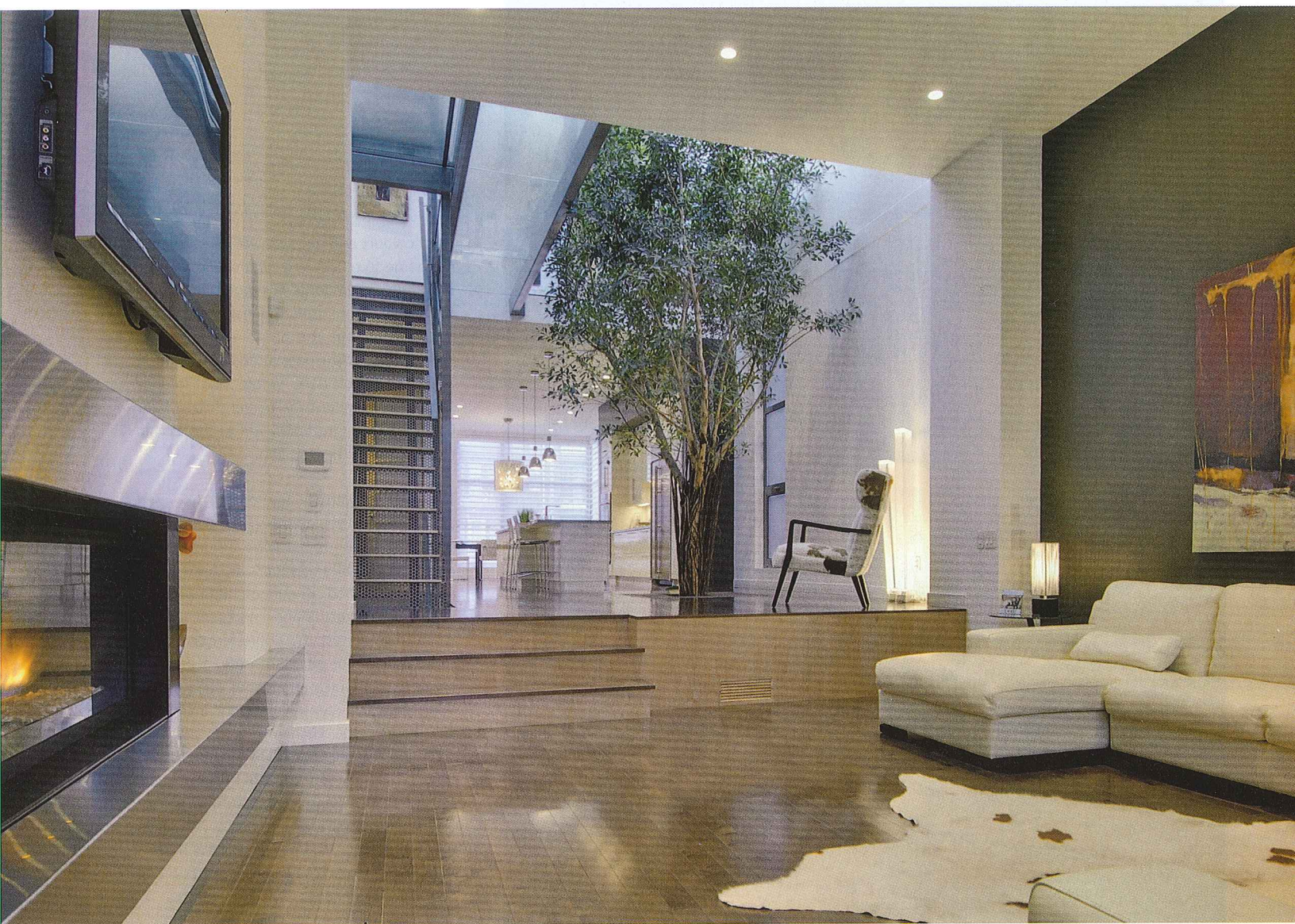




Light colours and glass are used throughout the home to reflect and maximise the effect that the vast amounts of natural light have on the structure, and the hardwood floor used throughout the home adds a subtle counterpoint to the pure white walls, creating a warm atmosphere within the interior space. Throughout the home, unique light fixtures (from Light Span) add to the artistic illumination of the dwelling.

The kitchen features top of the line gen air stainless steel appliances (including a temperature-controlled wine fridge) off-set against pure white cabinetry and walls, while modern polished aluminium light fixtures light the concrete island and breakfast bar which runs almost the entire length of the room. A separate area is set aside for a dining space within which an elegant glass dining table is tastefully centred, boasting incredible city views. The kitchen extends into the slightly sunken living room, separated by a 23 ft Fikus fig tree—imported from Florida. The main floor living room features floor-to-ceiling windows, and includes a 20ft glass wall and inbuilt elongated fireplace with steel mantle and nook, creating an atmosphere of comfort and elegance.

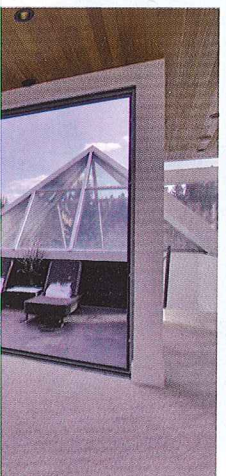
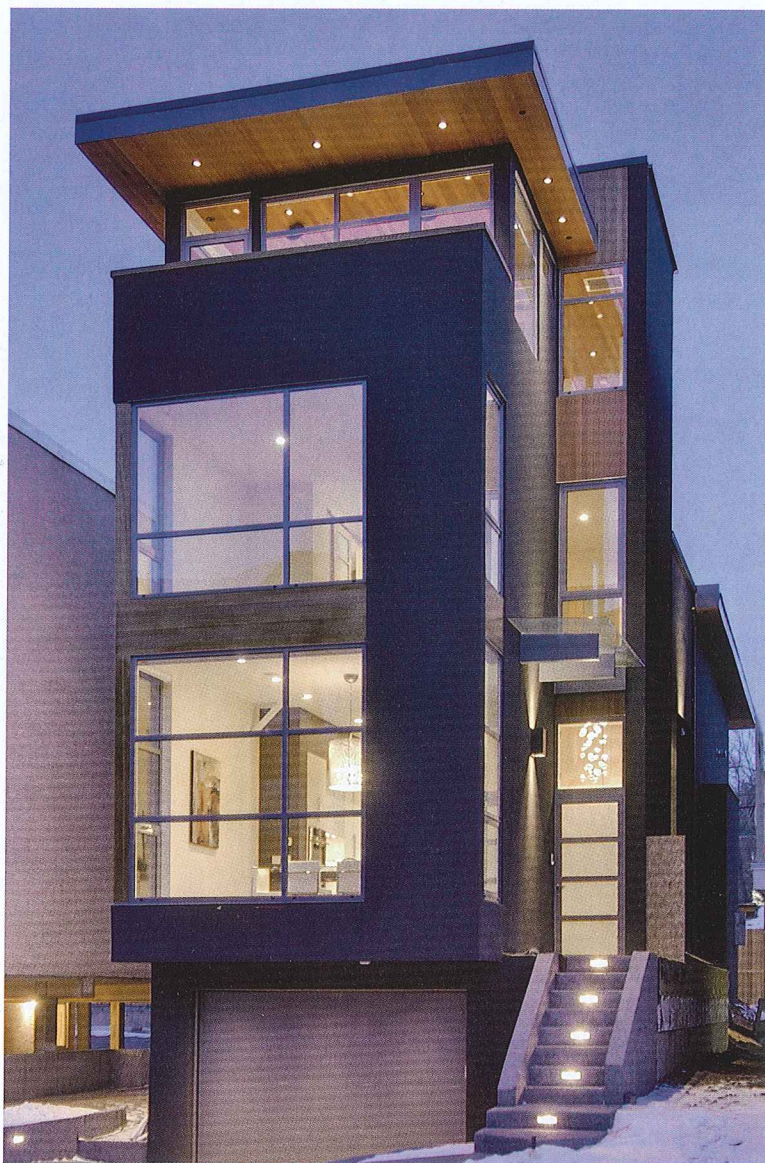
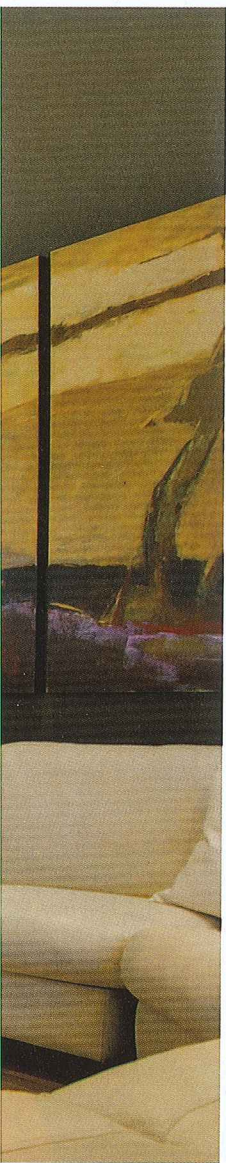




A steel mesh staircase, topped with light maple steps, beckons you upstairs to where the top of the fig tree meets the pyramidal skylight. A glass bridge connects the master bedroom with the two other bedrooms, creating further interplay between the natural illumination and the glass spaces, and allowing a view to the room below.

The master bedroom is understated yet sophisticated, unadorned, for the most part, to draw attention to the colours and structure of the room itself—an effect that is





subtle, yet stylish. A fireplace adds warmth and intimacy, and acrylic glass cabinets provide elegant storage space. Glass is again the primary feature, as large windows allow a flood of light, while a glass wall surrounds the bathroom area and gorgeous air jetted tub, skirted with maple, creating a separate relaxation area without being cut off from the natural light and views acting upon rest of the room. Within the bathroom, there is a simple, calming elegance, with a glass panel allowing a view through to the atrium skylight.

The two bedrooms across the glass walkway from the master have attached ensuites with air jetted tubs, concrete counters and the same finishings as in the rest of the home.

Another staircase leads to the top level, which consists of a sun room with spectacular panoramic views of the surrounding city skyline. The included wet bar features another wine fridge, a chiller, and a preparation area dedicated to mixes. A sliding door provides access to a private roof-top retreat—the ideal place for relaxation in the sun.

The lower level is complete with a games room and plenty of storage space, while the 4-car garage is the perfect offering for any car enthusiast.

The modern furniture included complements the interior design perfectly with a design





that is sleek and sophisticated, featuring simple, elegant lines, and blending perfectly with the style and colour of the surrounding space. This interior style is consistent throughout the home, with maple hardwood flooring and light maple cabinetry creating a continuous flow throughout. High velocity heating ensures comfortable winters, and the environmentally friendly materials used in the home contribute towards an eco-friendly lifestyle.

This home demonstrates a creative interaction between the natural illumination and the unique structure within. The interior decorating echoes and strengthens this effect, while adding an artistic modernity, and creating a seamless visual flow throughout the home. Without a doubt, this is one of Calgary's most unique and desirable properties available.

For more information, please visit www.zaharko.com.