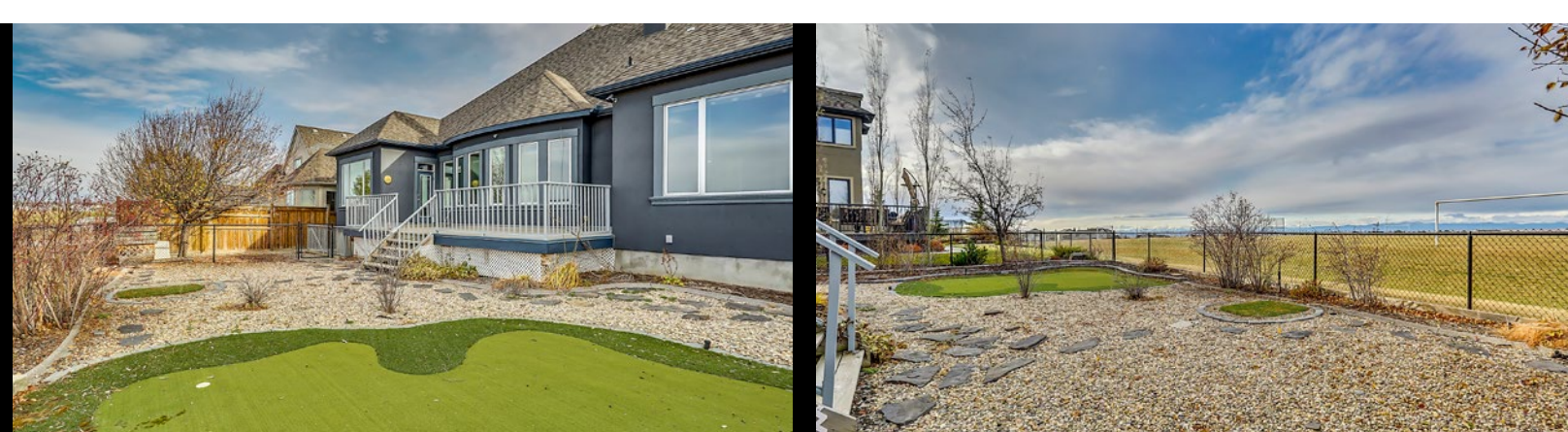
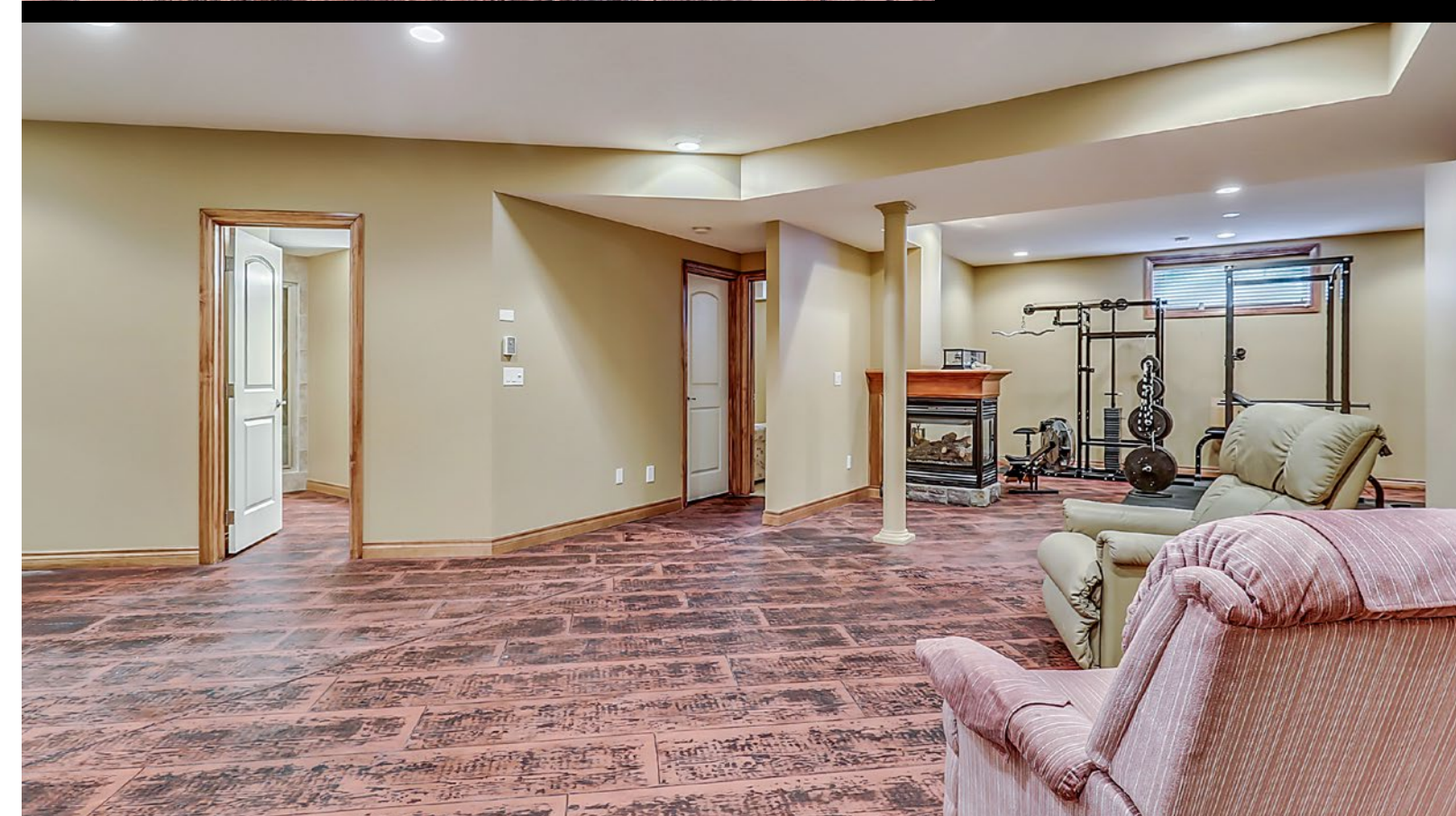




MLS: C4143180
 Year Built: 2004
 Total SqFt: 2,269
 Taxes: \$6,071/2017

Kitchen 14'0"X11'0" M
 Dining Rm 17'6"X8'8" M
 Bkfst Nook 10'8"X8'8" M
 Living Rm 15'0"X13'10" M
 Laundry 16'4"X6'6" M
 Master Bed 16'0"X13'2" M
 Bedroom 2 11'6"X10'0" M
 Bedroom 3 10'6"X10'0" M
 Bedroom 4 16'10"X13'4" B
 Bedroom 5 13'0"X12'4" B
 Family Rm 18'4"X9'6" B
 Storage 14'0"X12'4" B
 Rec Rm 19'6"X16'0" B
 Utility Rm 15'0"X10'6" B
 Other 12'2"X9'6" B



Welcome Home to

7 Rockcliff Landing NW





Chris Zaharko
Associate

ROYAL LEPAGE
Benchmark
INDEPENDENTLY OWNED AND OPERATED, BROKER

Phone: 403-874-0424
www.zaharko.com - chris@zaharko.com

Top 1% Nationally



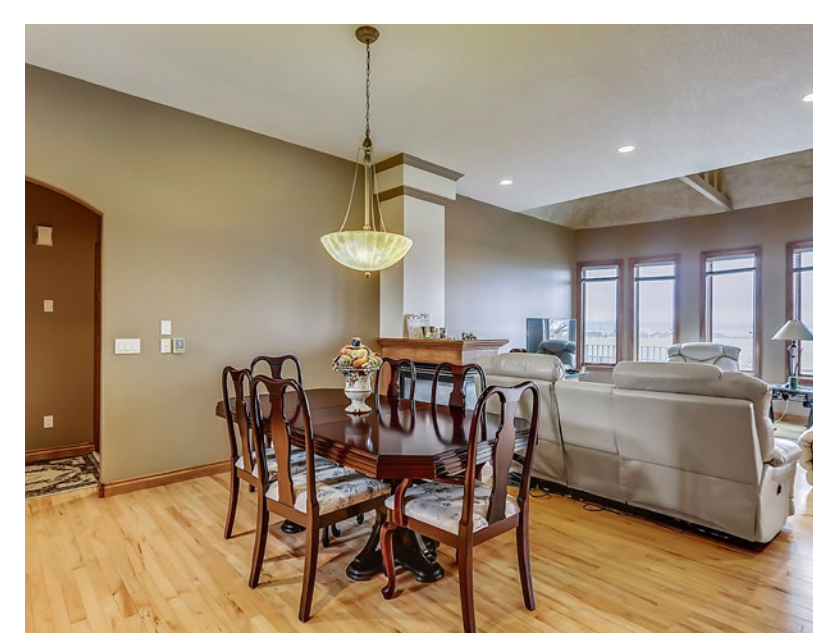


Chris Zaharko
Associate

ROYAL LEPAGE
Benchmark
INDEPENDENTLY OWNED AND OPERATED, BROKER

Phone: 403-874-0424
www.zaharko.com - chris@zaharko.com

Top 1% Nationally



Welcome to this one of a kind home in Rocky Ridge. Fully finished with over 2,200 square feet on 1 level, and 4400 sqft of development including an ELEVATOR, this home has been designed for a professional couple, but has plenty of room for a family. 3 bedrooms up and another 2 below in the fully finished basement, along with recreation room featuring 3-sided fireplace, heated exposed concrete floors & built-in bar. A full bath, plenty of storage and a walk up basement complete the lower level. On the main floor, the master bedroom features an amazing roman style spa ensuite, with columns tile stairs leading to a circular jetted tub, surrounded by a turret of windows, & separate steam shower. Plenty of room for entertaining with a large living room, dining nook & kitchen that overlooks breathtaking mountain views out your back door. Enjoy the evening sun from your west-facing yard while putting on your own private putting green. Other great features of this home include a wine cellar, cold room, safe room, heated dog shower in the mud room, heated floors from the walk up basement, and triple garage with room for lifts. Fully landscaped with sprinkler system, and backing onto a green space. Close to all amenities, shopping and public transit.

