

Welcome Home to

5024 20 Ave NW



Located in Montgomery this framed stage custom home is ready for your finishing touches! Great views south from the second floor with a total of 2,288 sqft of development. Walking distance to the Children's and Foothill's Hospitals makes this the perfect property for medical professionals. This 5 bedroom floor-plan allows for a home office and/or a self contained legal suite. The main floor offers vaulted ceilings in the generous sized kitchen/living room area. Detached double garage, with additional adjacent parking, the large driveway and ample street parking has room for guests. The preserved wood foundations provides additional insulation in the below grade living area. Steps to city transit, walking distance to Safeway, Shouldice Park & the Aquatic Centre. Minutes to Market Mall and the U of C. See builders plans in the supplements to see all the potential that this property has to offer. DISCLAIMER: The measurements on the floor plans provided are based on the builders plans

5024 20 Ave NW

5024 20 AVENUE NW

MAIN - 718.09 Sq.ft. / 66.71 m²

UPPER - 837.57 Sq.ft. / 77.81 m²

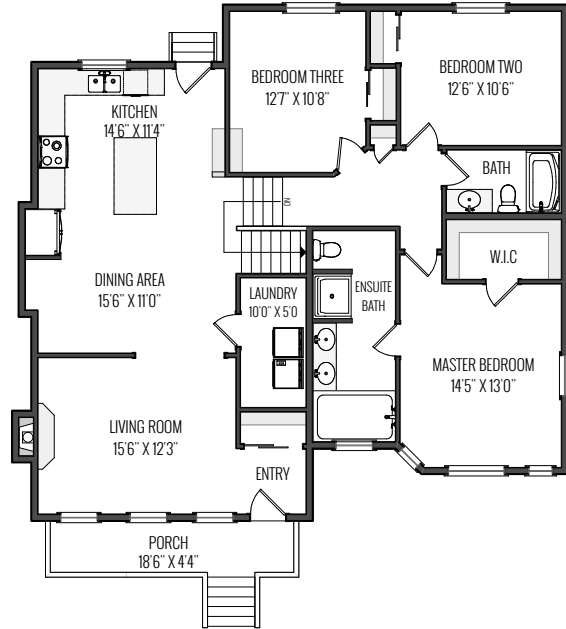
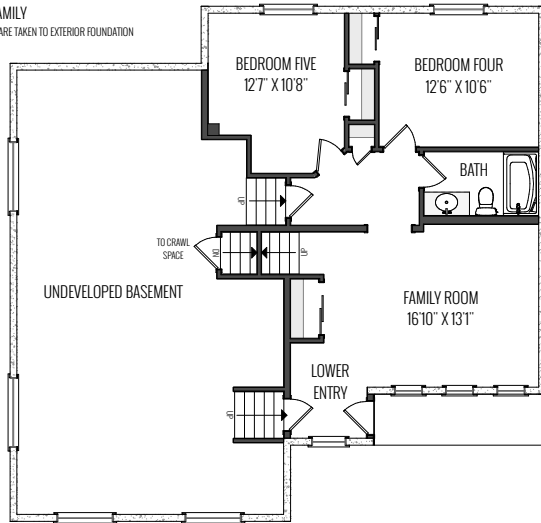
RMS TOTAL - 1555.66 Sq.ft. / 144.52 m²

LOWER - 748.65 Sq.ft. / 69.55 m²

UNDEVELOPED BASEMENT - 728.51 Sq.ft. / 67.68 m²

DETACHED SINGLE FAMILY

*RECA RMS MEASUREMENTS ARE TAKEN TO EXTERIOR FOUNDATION



*FLOOR PLAN IS BASED OFF OF PROPERTY BLUEPRINTS.



Chris Zaharko
Associate

ROYAL LEPAGE
Benchmark
INDEPENDENTLY OWNED AND OPERATED, BROKER



Phone: 403-874-0424

www.zaharko.com - chris@zaharko.com

Top 1% Nationally