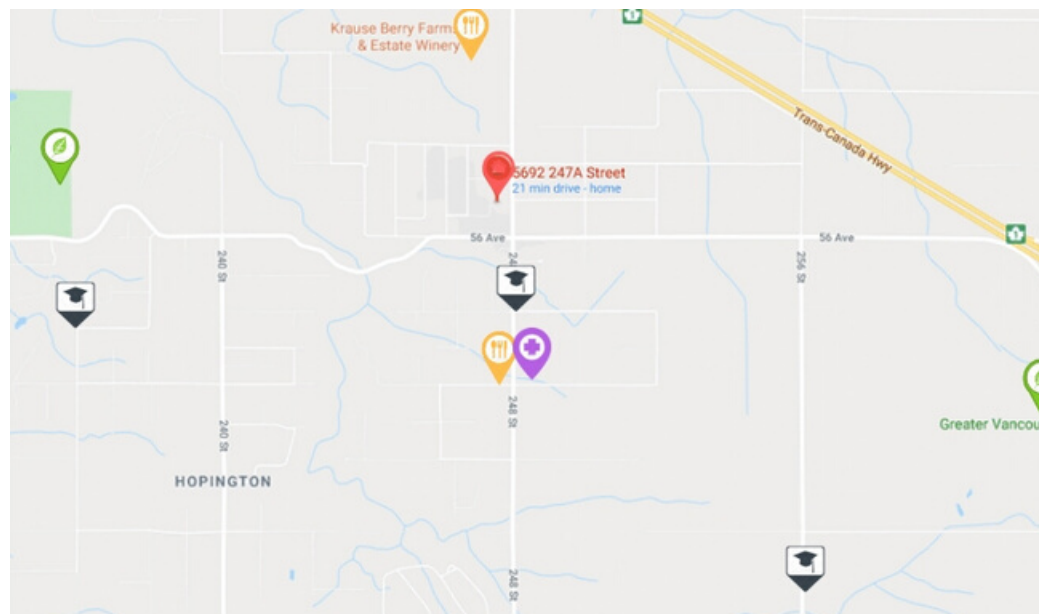




EMMA STEWART

REAL ESTATE

5692 247A STREET

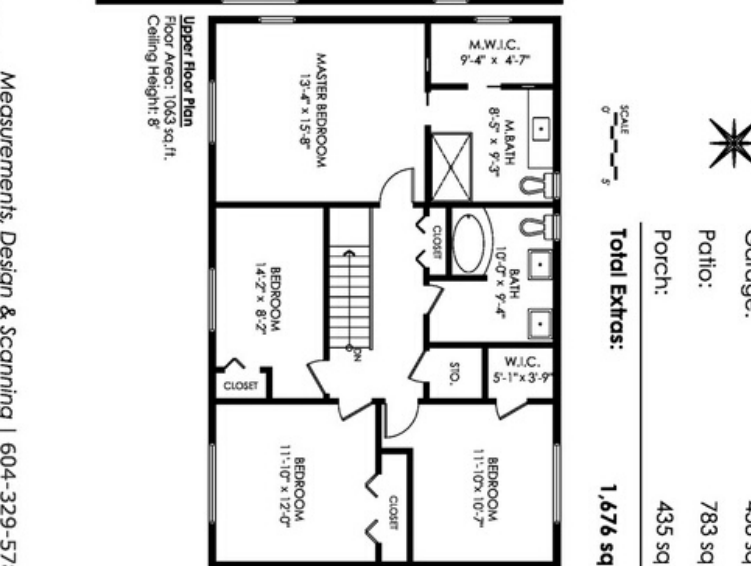
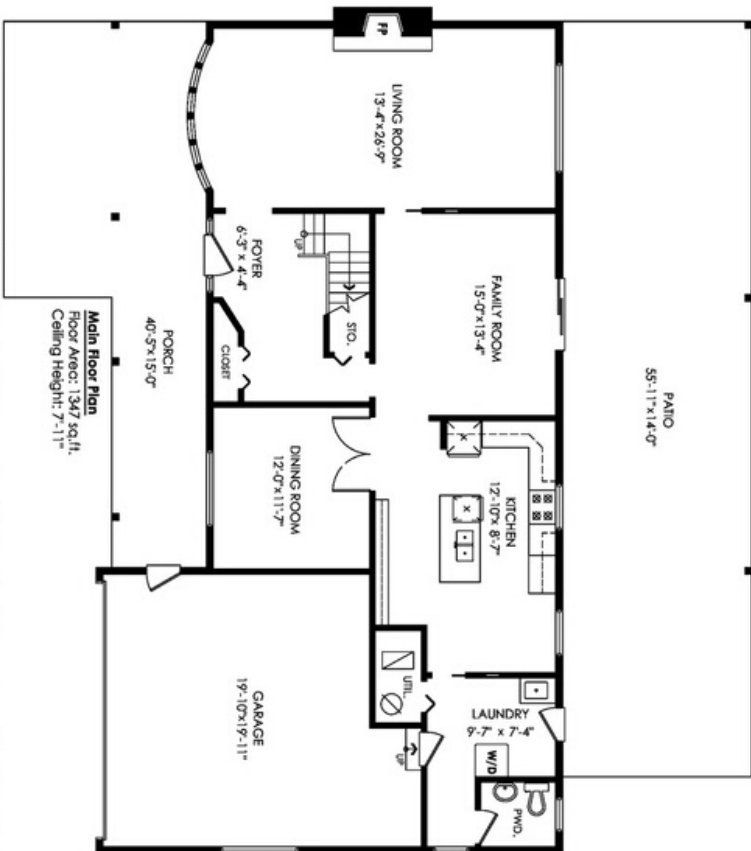


604.607.5214

emmastewarthomes.ca



5692 247A St, Langley



Main Floor:	1,347 sq.ft.
Upper Floor:	1,063 sq.ft.
Total:	2,410 sq.ft.
Garage:	458 sq.ft.
Patio:	783 sq.ft.
Porch:	435 sq.ft.
Total Extras:	1,676 sq.ft.

MLS NO: R2455451
PRICE: \$1,299,900
YEAR BUILT: 1983
TYPE: House/Single Family
Lot Size: 18,992,
AMENITIES: Large fenced in backyard
quite family friendly neighbourhood

5962 247A Street

SCHOOLS
Coghlan Fundamental Elementary 5.3KM
North Otter Elementry 1.2KM
DW Poppy Secondary School 7.7KM

TRANSIT
Closest on ramp to Hwy 1 Westbound 4.7KM
Closest on ramp to Hwy 1 Eastbound 4.7KM

PARKS & REC
Tall Timbers Golf Course 3.9KM
Greater Vancouver Zoo 5.8KM

CONVENIENCE
JD Farms 4.6KM
Krause Berry Farms & Estate Winery 2.4KM

EMERGENCY SERVICES
Fire Hall 1.1KM



This rare find on a gorgeous 1/2 acre will WOW you from the driveway! Inside is just as jaw-dropping w/a bright, main floor w/hardwood flooring, an expansive living room w/gas F/P, a family room w/french doors that lead out to a fully fenced & private backyard. Outside also has a covered sundeck-perfect for enjoying the sun w/your morning coffee. Coming back inside, you'll find the kitchen & adjacent dining room. The kitchen has on-trend granite counters & an abundance of both cabinet & counter space, a wall of pantry cupboards & SS appliances. Upstairs has a fantastic master suite w/walk-in closet & updated ensuite bathroom, 3 more oversized bedrooms & another bathroom updated w/in-floor heat. Parking for 8 cars or the RV - this home has it all! Enjoy as-is or build your dream shop!



4



2,410 sqft



3



\$5,227.46 (2019)

For full listing details visit www.emmastewarthomes.ca