

34 WEXFORD WAY SW, CALGARY

MAIN - 1777.85 Sq.ft. / 165.16 m2

RMS TOTAL - 3752.29 Sq.ft. / 348.59 m2

DETACHED SINGLE FAMILY

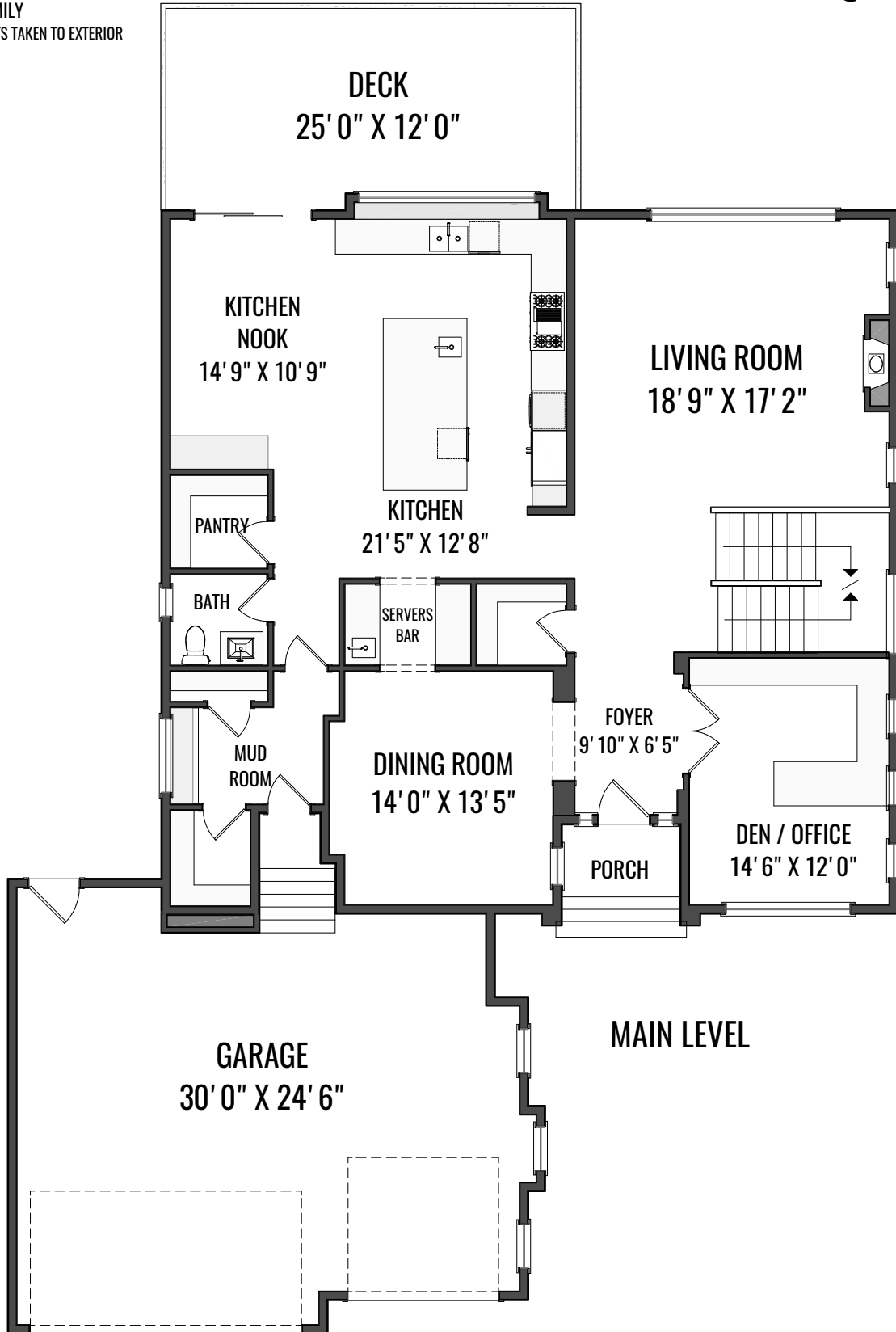
*RECA RMS MEASUREMENTS TAKEN TO EXTERIOR FOUNDATION

CHASE OLSEN

RE/MAX FIRST

CHASE@CHASINGHOMES.CA

403.606.0340



34 WEXFORD WAY SW, CALGARY

UPPER - 1974.44 Sq.ft. / 183.43 m²

RMS TOTAL - 3752.29 Sq.ft. / 348.59 m²

DETACHED SINGLE FAMILY

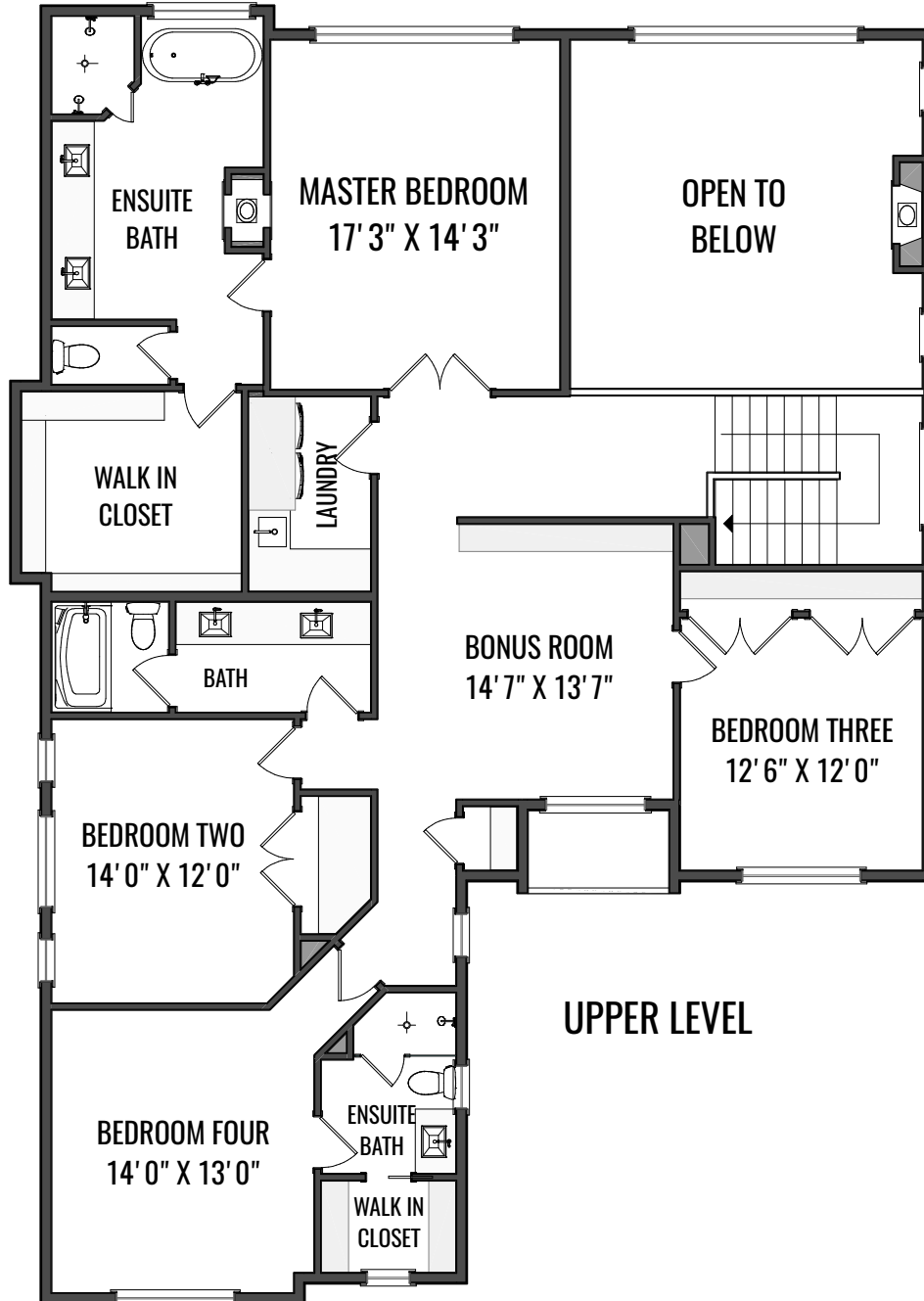
*RECA RMS MEASUREMENTS TAKEN TO EXTERIOR
FOUNDATION

CHASE OLSEN

RE/MAX FIRST

CHASE@CHASINGHOMES.CA

403.606.0340



34 WEXFORD WAY SW, CALGARY

BASEMENT - 1777.85 Sq.ft. / 165.16 m2

**DEVELOPED AREA - 1635.07 Sq.ft. / 151.90 m2

DETACHED SINGLE FAMILY

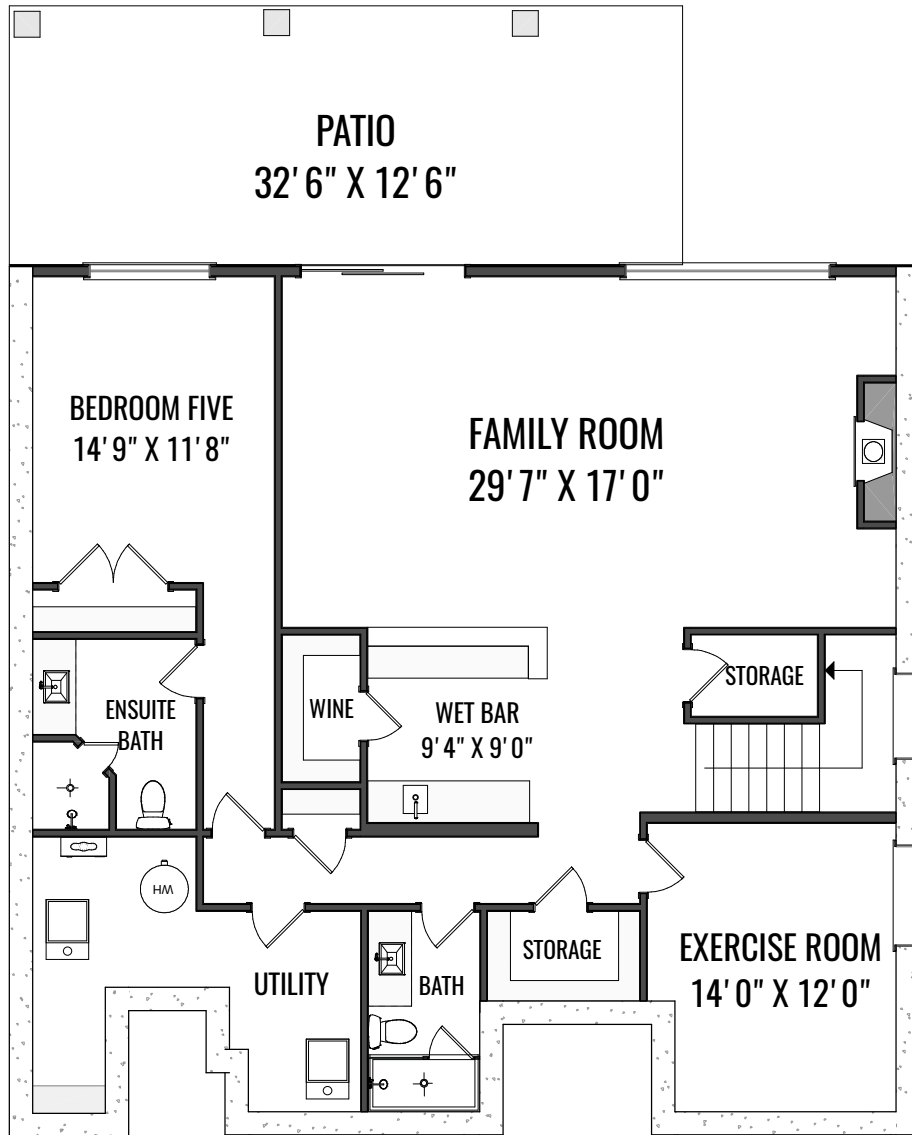
*RECA RMS MEASUREMENTS TAKEN TO EXTERIOR
FOUNDATION

CHASE OLSEN

RE/MAX FIRST

CHASE@CHASINGHOMES.CA

403.606.0340



BASEMENT