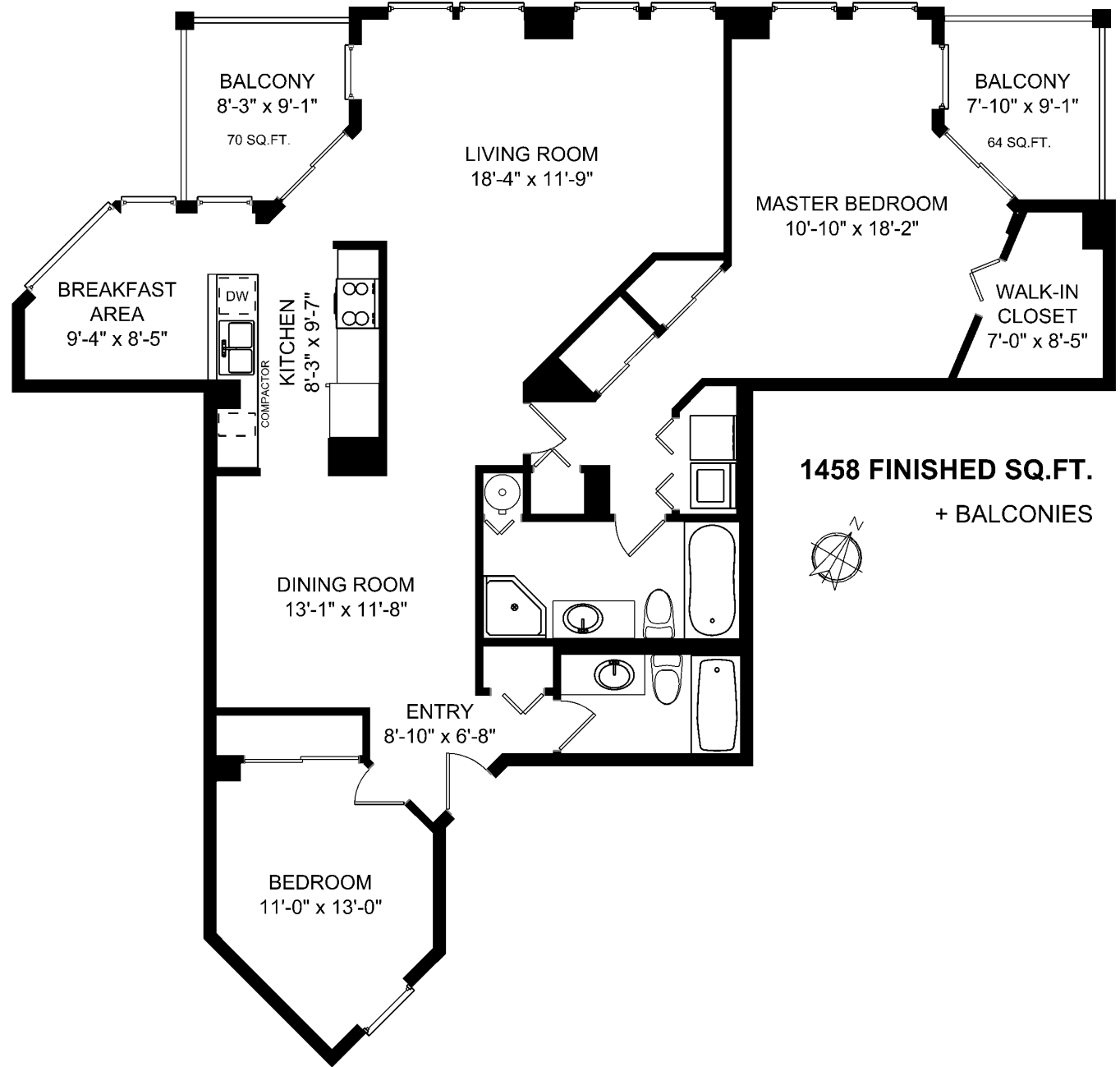




**DANIELLE & BLAKE**

MoveToVictoria.com (250) 479-3333

419-203 Kimta Rd



	Fin. Sq.Ft.	UnFin. Sq.Ft.	Total Sq.Ft.
Single Level	1458	0	1458
<b>Total</b>	<b>1458</b>	<b>0</b>	<b>1458</b>

Shown length and width dimensions are approximate. Area sq.ft. is representative of the on-site measurements. (1" accuracy)



Figures, Calculations, and Representations are for indicative and promotional purpose only. VI Standard Real Estate Services Inc. will not be liable for any damages of any kind arising from the mis-use of this information.