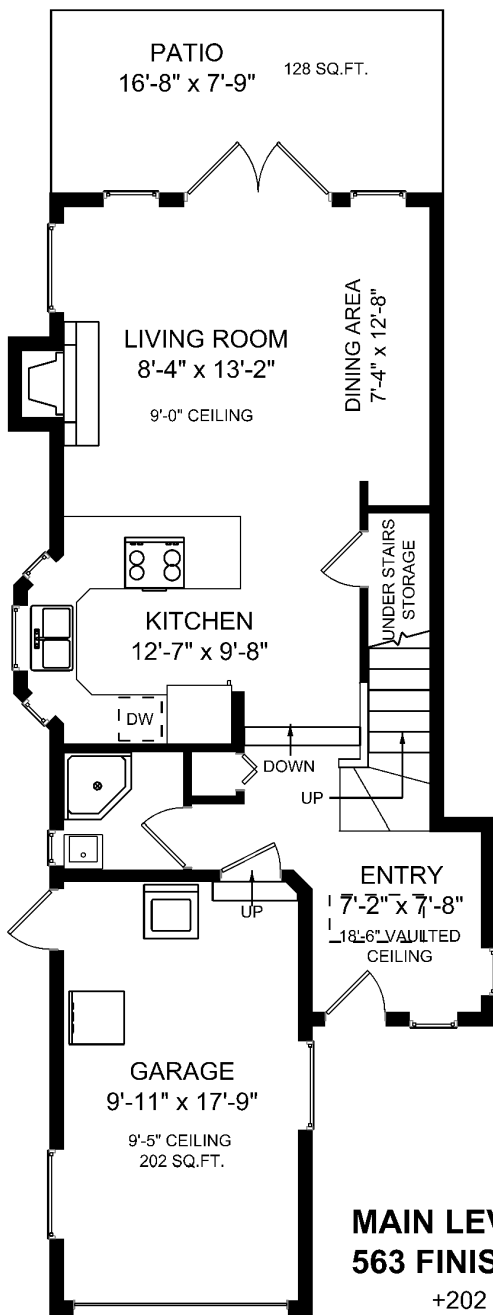




**DANIELLE & BLAKE**

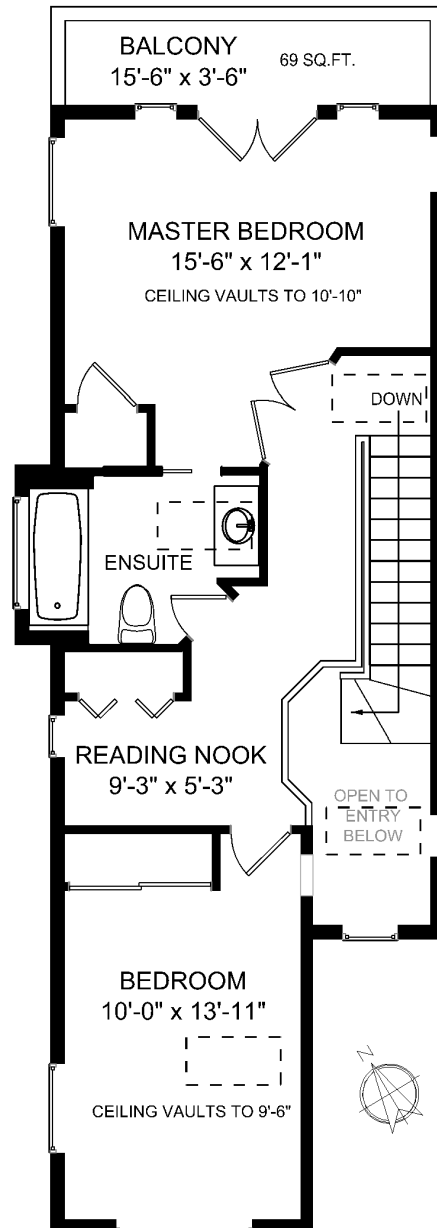
MoveToVictoria.com (250) 479-3333

2234 Edgelow St



**MAIN LEVEL**  
**563 FINISHED SQ.FT.**  
 +202 SQ.FT. GARAGE

**UPPER LEVEL**  
**530 FINISHED SQ.FT.**



	Fin. Sq.Ft.	UnFin. Sq.Ft.	Total Sq.Ft.
Main Level	563	0	563
Upper Level	530	0	530
Garage	0	202	202
<b>Total</b>	<b>1093</b>	<b>202</b>	<b>1295</b>

Shown length and width dimensions are approximate.  
 Area sq.ft. is representative of the on-site measurements. (1" accuracy)



Figures, Calculations, and Representations are for indicative and promotional purpose only.  
 VI Standard Real Estate Services Inc. will not be liable for any damages of any kind arising from the mis-use of this information.