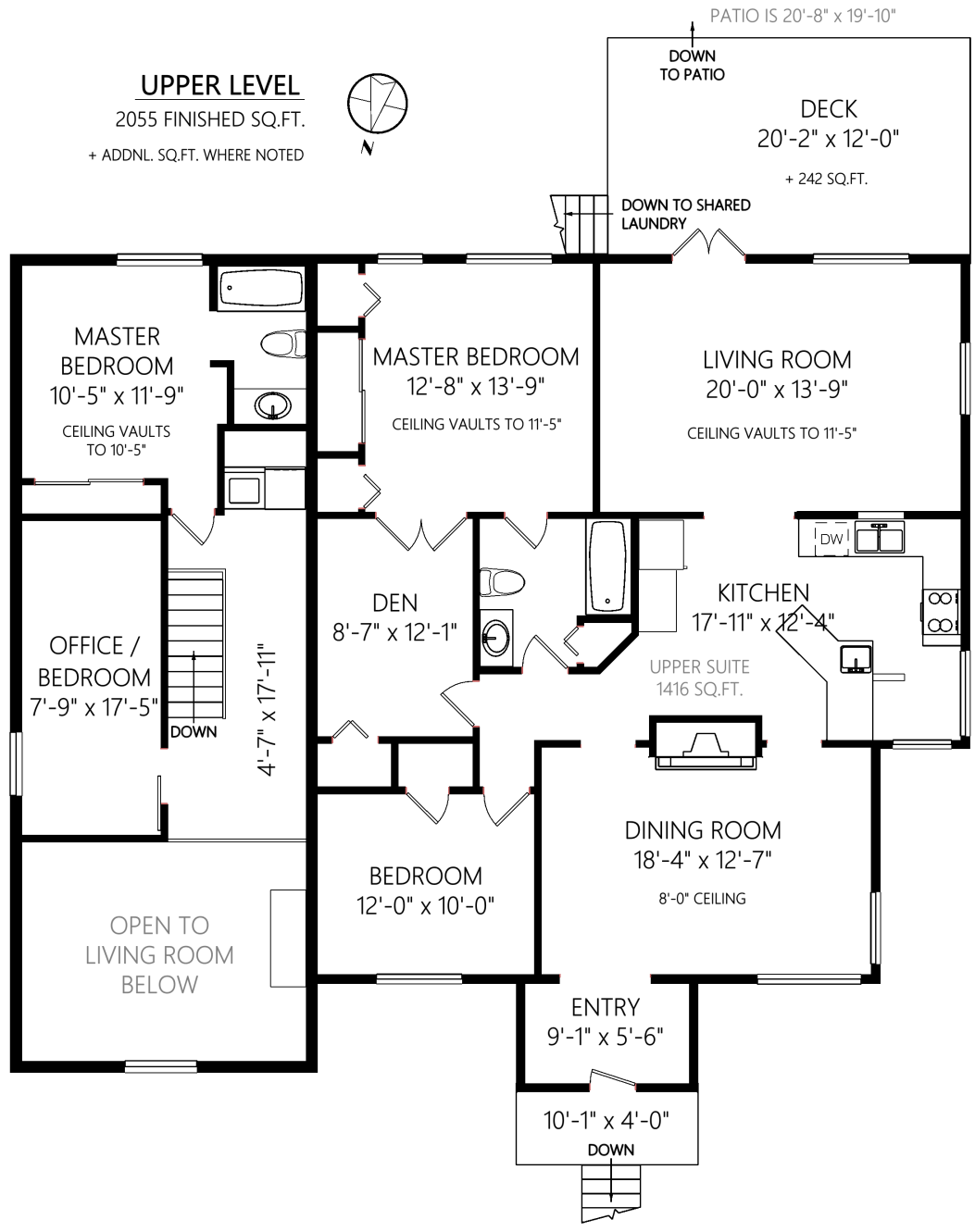




DANIELLE & BLAKE

MoveToVictoria.com (250) 479-3333

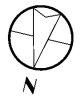
837 Canterbury Rd



UPPER LEVEL

2055 FINISHED SQ.FT.

+ ADDNL. SQ.FT. WHERE NOTED



	Fin. Sq.Ft.	UnFin. Sq.Ft.	Total Sq.Ft.
Upper Level	2055	0	2055
Lower Level	1630	95	1725
Total	3685	95	3780

Shown length and width dimensions are approximate. Area sq.ft. is representative of the on-site measurements. (1" accuracy)

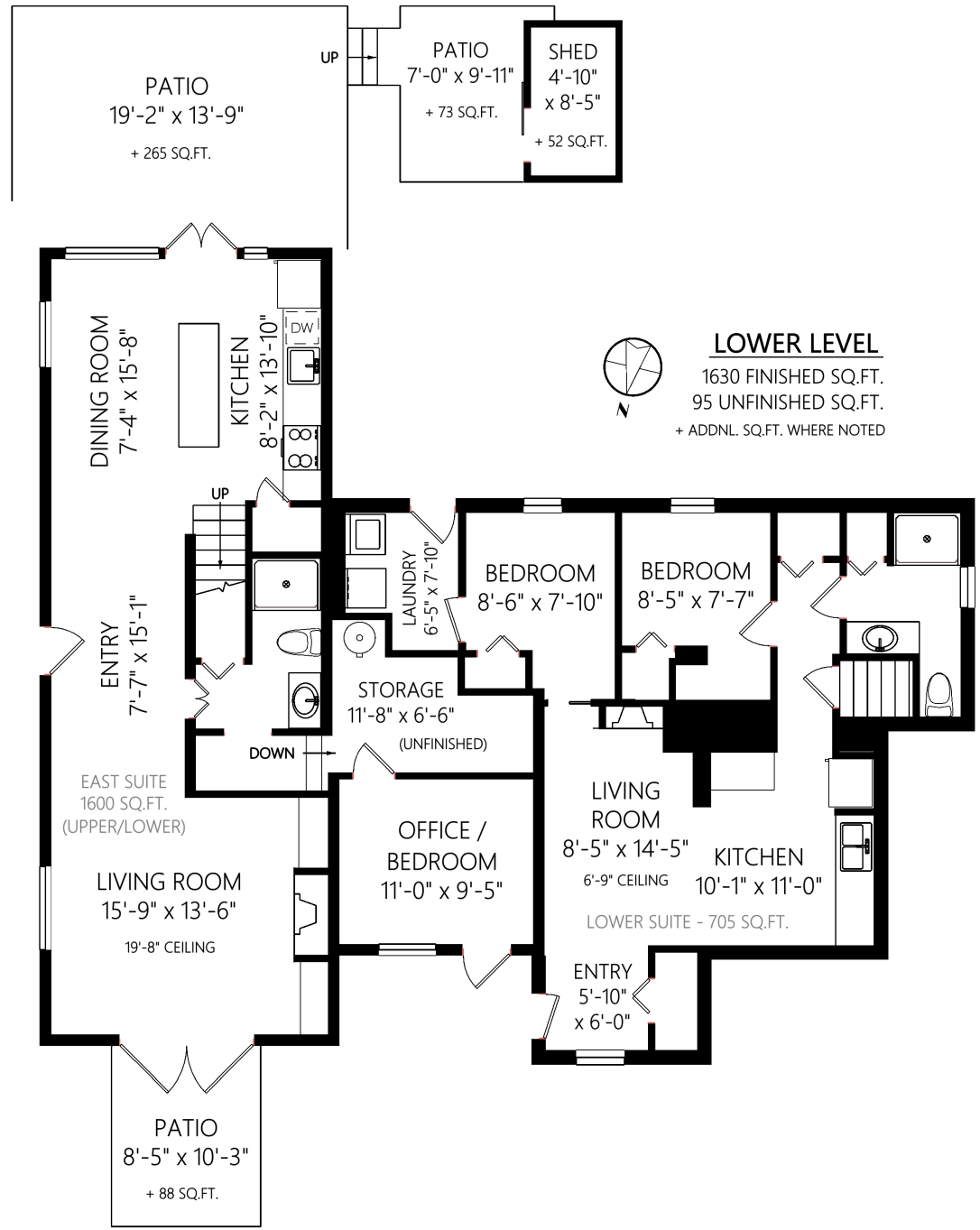


Figures, Calculations, and Representations are for indicative and promotional purpose only. VI Standard Real Estate Services Inc. will not be liable for any damages of any kind arising from the mis-use of this information.



DANIELLE & BLAKE
 MoveToVictoria.com (250) 479-3333

837 Canterbury Rd



	Fin. Sq.Ft.	UnFin. Sq.Ft.	Total Sq.Ft.
Upper Level	2055	0	2055
Lower Level	1630	95	1725
Total	3685	95	3780

Shown length and width dimensions are approximate.
 Area sq.ft. is representative of the on-site measurements. (1" accuracy)



Figures, Calculations, and Representations are for indicative and promotional purpose only.
 VI Standard Real Estate Services Inc. will not be liable for any damages of any kind arising from the mis-use of this information.