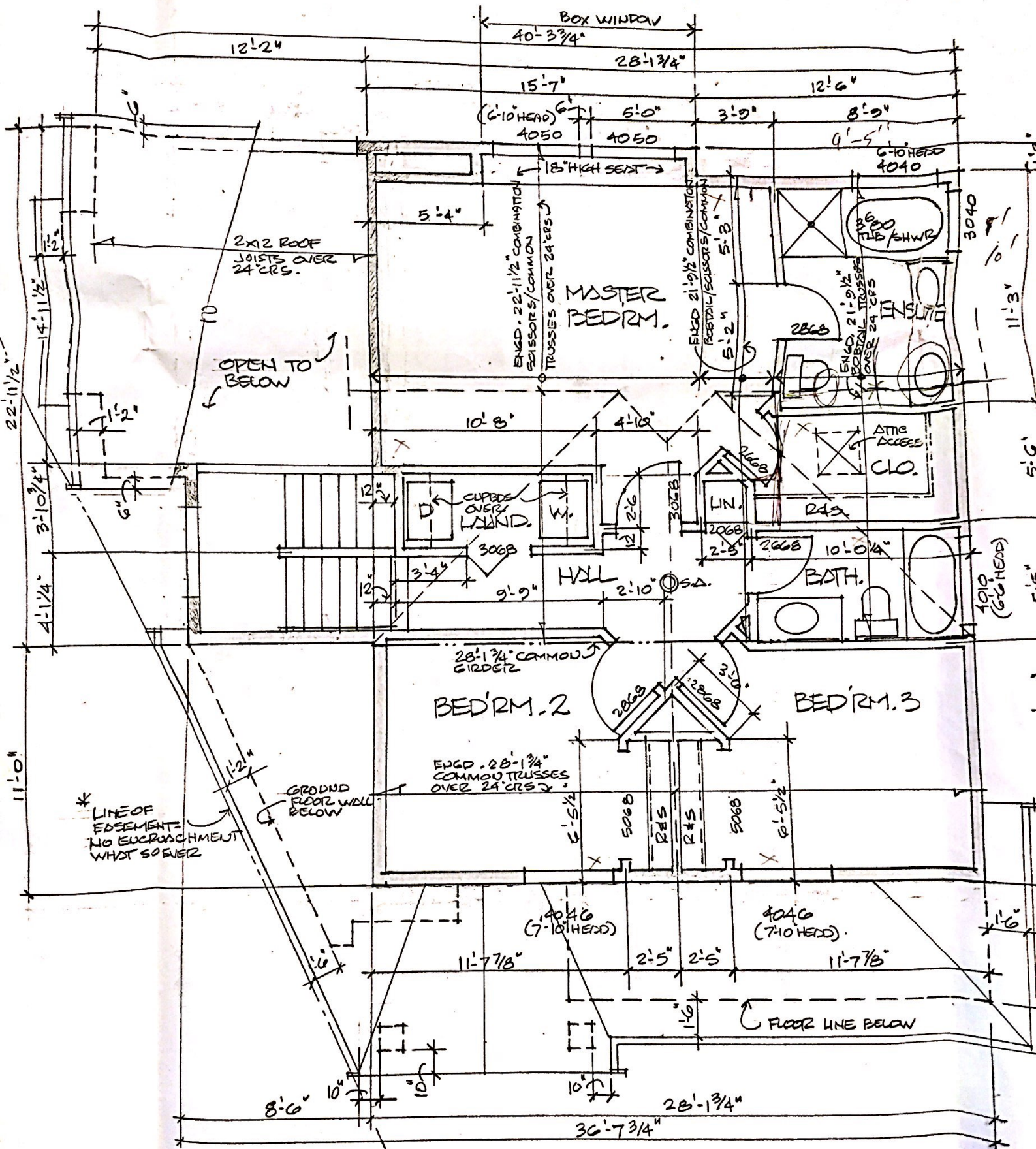


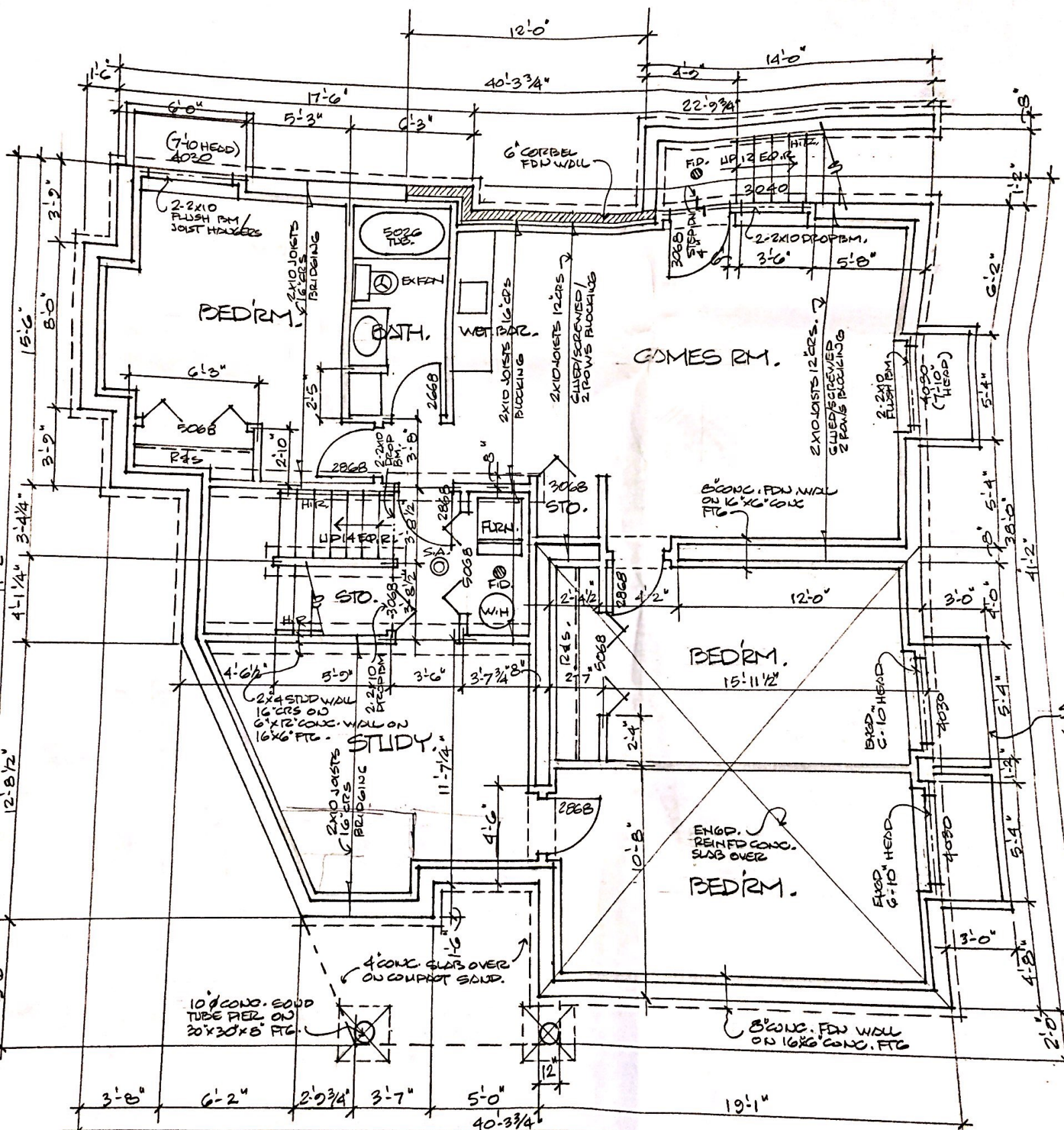
GROUND FLOOR 1/4"

AREA = 984 SQ. FT.
GARAGE AREA = 380 SQ. FT.
GROSS GROUND FLOOR AREA = 1364 SQ. FT.



UPPER FLOOR 1/4"

AREA = 916 SQ. FT.
 GROSS UPPER FLOOR AREA = 997.05 SQ. FT.
 (MAX ALLOWED = 1091 SQ. FT.)
 MIN. LOWER ROOF OFFSET = 273 SQ. FT.
 LOWER ROOF PROPOSED = 424 SQ. FT.



BASEMENT - FOUNDATION PLAN $\frac{1}{4}"$

AREA = 1364 SQ. FT.