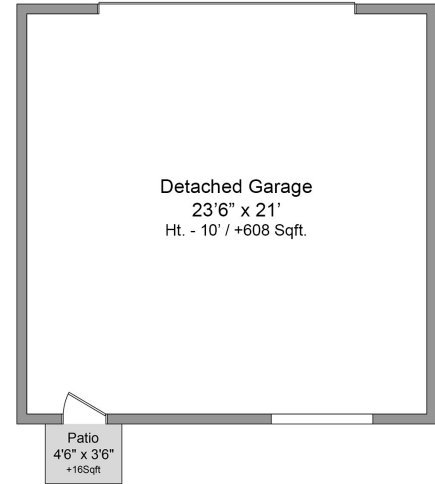
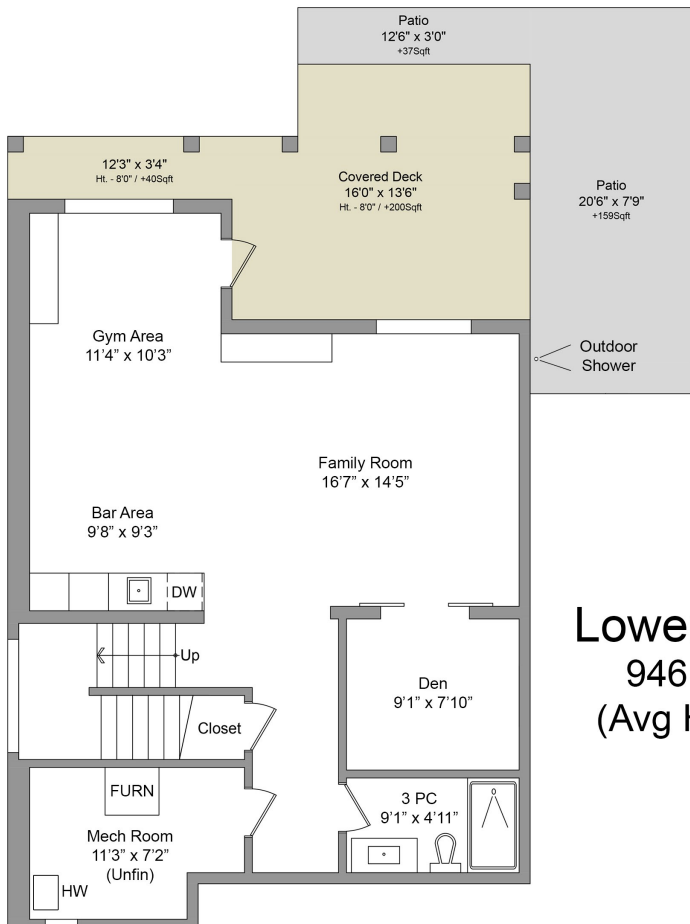
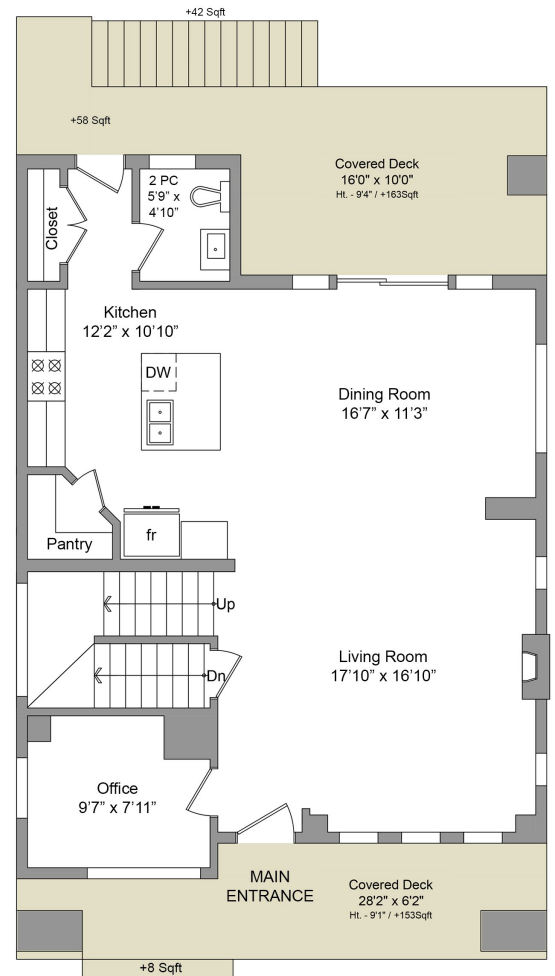


Upper Floor
1072 Sqft.
(Avg Ht. - 8')



Main Floor
946 Sqft.
(Avg Ht. - 9')



Lower Floor
946 Sqft.
(Avg Ht. - 8')

3545 Ryder Hesjedal Way

This floorplan was created for the exclusive use of
Troy Peterson with Sutton West Coast Realty
Area and Dimensions are Approximate, Buyer to Verify On Site.

FLOOR	AREA (Sq. Ft.)			
	Finished	Unfinished	Garage	Patios/Decks
Upper	1072	0		
Main	946	0		
Lower	858	88		
Total	2876	88	608	
Garage	0	0	608	