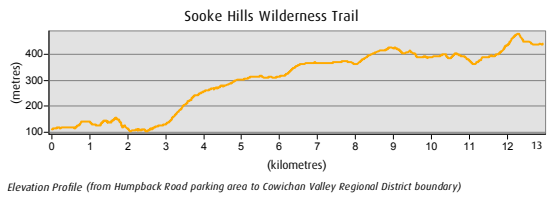
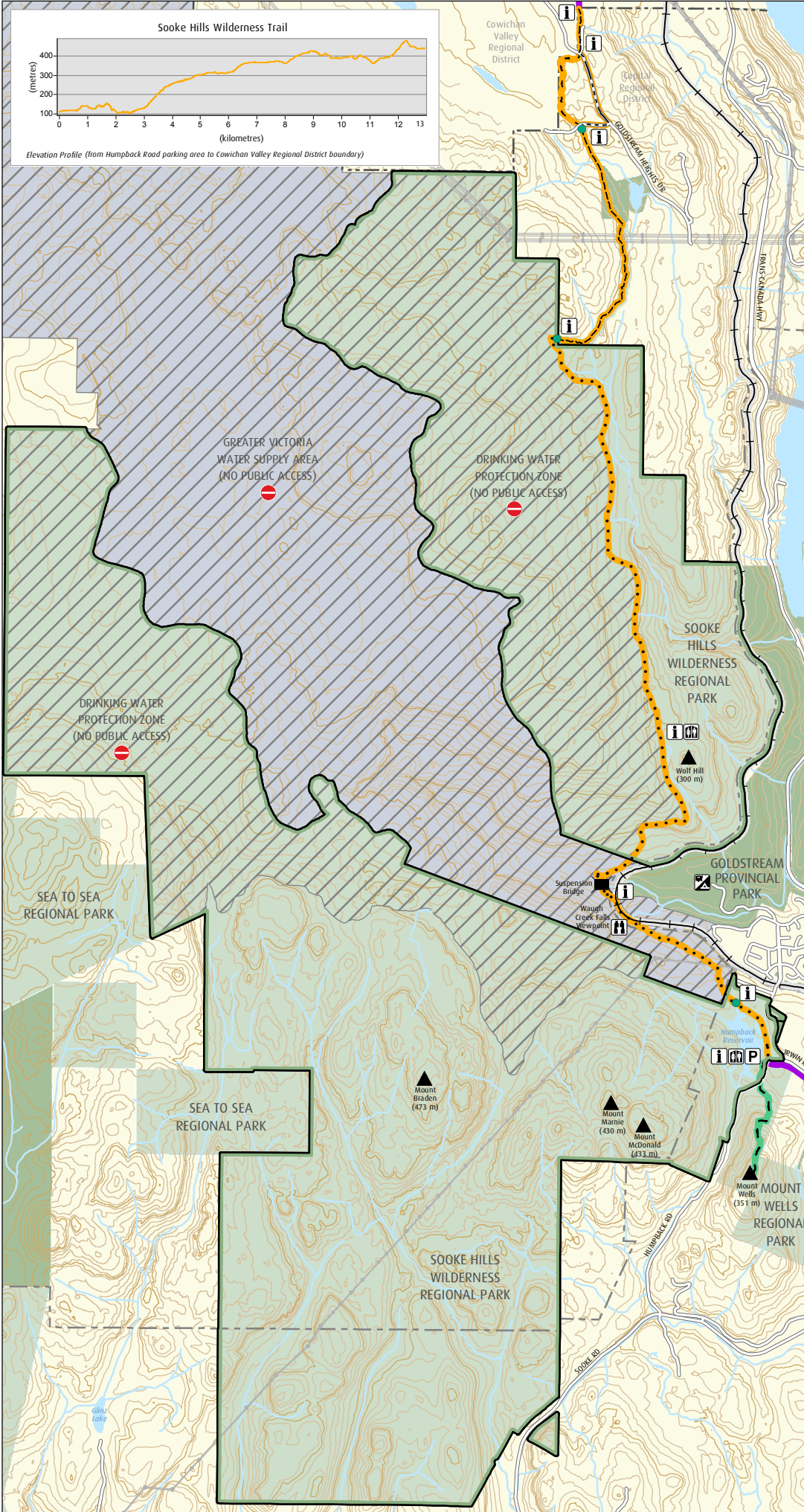


- Sooke Hills Wilderness Trail (13 km)  
(Part of The Great Trail)
- The Great Trail
- ⋯ Regional Trail
- Road
- Sooke Hills Wilderness Regional Park
- Other Regional Park
- Other Park/Protected Area
- Drinking Water Protection Zone
- Greater Victoria Water Supply Area

**Important** This map is for general information purposes only. The Capital Regional District (CRD) makes no representations or warranties regarding the accuracy or completeness of this map or the suitability of the map for any purpose. **This map is not for navigation.**

# Capital Regional District Sooke Hills Wilderness Regional Park



## Park Amenities

- Information
- Parking Lot
- Suspension Bridge
- Toilet
- Waugh Creek Falls Viewpoint

## Trails By Designated Use

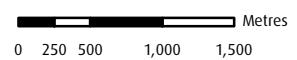
- Hiking Trail
- Hiking/Cycling Trail
- Cycling/Equestrian Trail
- Hiking/Cycling/Equestrian Trail

## Trails By Name (with Distances)

- Sooke Hills Wilderness Trail (13 km) (Part of The Great Trail)
- Summit Trail (1.3 km) *Mount Wells Regional Park*
- The Great Trail

## Map Features

- Specialized Gate (Cyclists Dismount)
- Summit
- Road
- Rail Corridor
- Regional District Boundary
- Municipal Boundary
- Hydro Wire
- Contour - 20m interval
- River / Stream
- Lake / Reservoir / Ocean
- Parking Lot
- Greater Victoria Water Supply Area
- Drinking Water Protection Zone
- Sooke Hills Wilderness Regional Park
- Other Regional Park
- Other Park/Protected Area



Projection: UTM ZONE 10N NAD83

## Disclaimer

**Important** This map is for general information purposes only. The Capital Regional District (CRD) makes no representations or warranties regarding the accuracy or completeness of this map or the suitability of the map for any purpose. **This map is not for navigation.** The CRD **will not be liable** for any damage, loss or injury resulting from the use of the map or information on the map and the map may be changed by the CRD at any time.



# Cowichan Valley Trail

