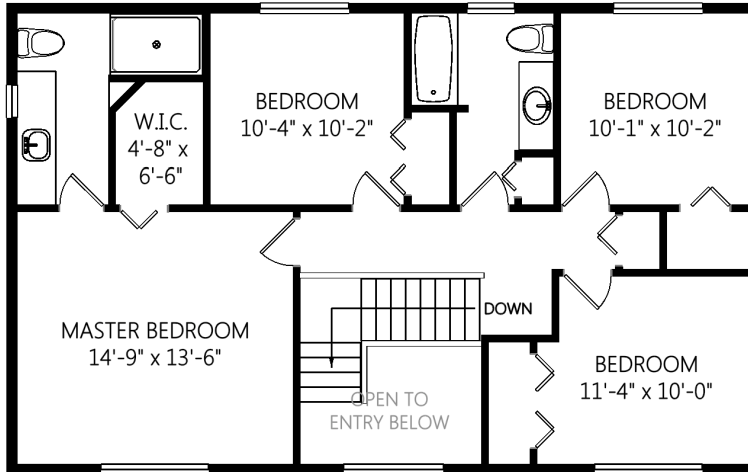
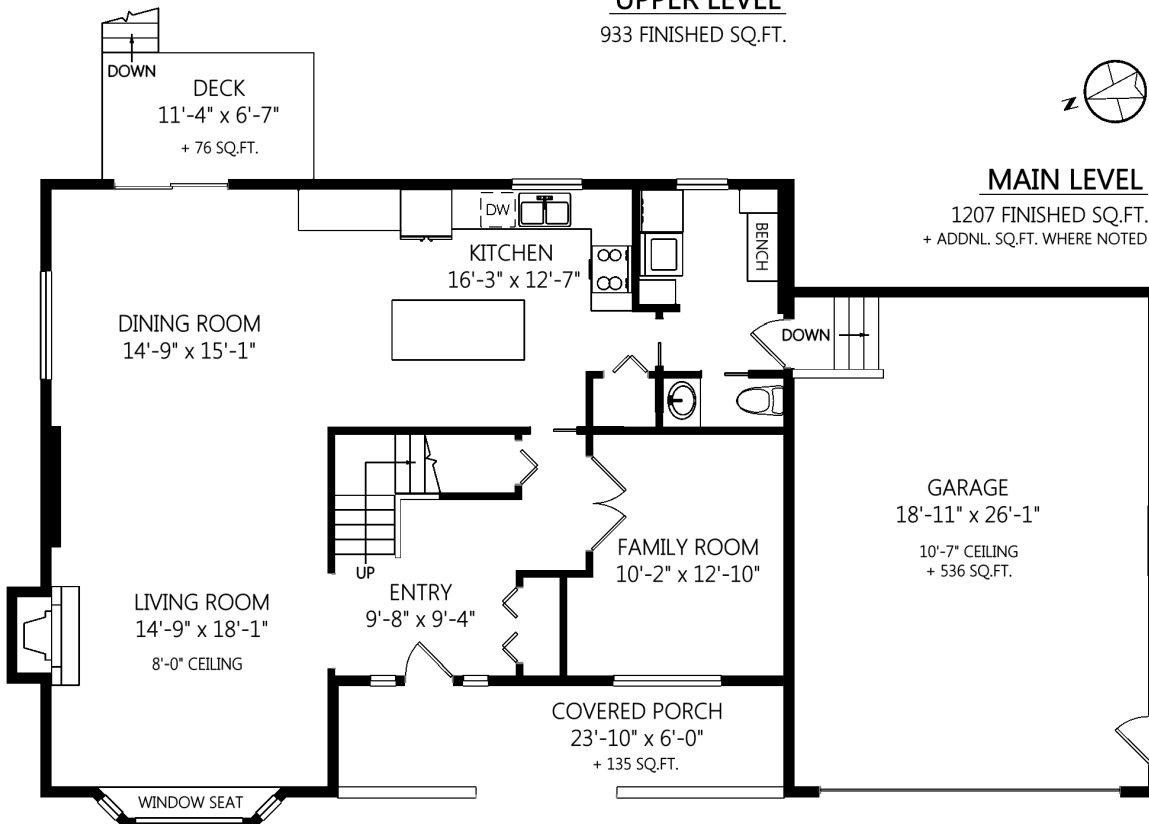




4445 Pimlott Pl



UPPER LEVEL
933 FINISHED SQ.FT.



MAIN LEVEL
1207 FINISHED SQ.FT.
+ ADDNL. SQ.FT. WHERE NOTED

	Fin. Sq.Ft.	UnFin. Sq.Ft.	Total Sq.Ft.
Main Level	1207	0	1207
Upper Level	933	0	933
Garage	0	536	536
Total	2140	536	2676

Shown length and width dimensions are approximate.
Area sq.ft. is representative of the on-site measurements. (1" accuracy)



Figures, Calculations, and Representations are for indicative and promotional purpose only.
VI Standard Real Estate Services Inc. will not be liable for any damages of any kind arising from the mis-use of this information.