

PLAN No. 10476

PLAN OF SUBDIVISION OF PART OF LOT 'C' AMENDED PLAN 1637 SECTIONS 14, 15<sup>A</sup> AND 77 VICTORIA DISTRICT B.C.

Scale: 1 inch = 60 feet.

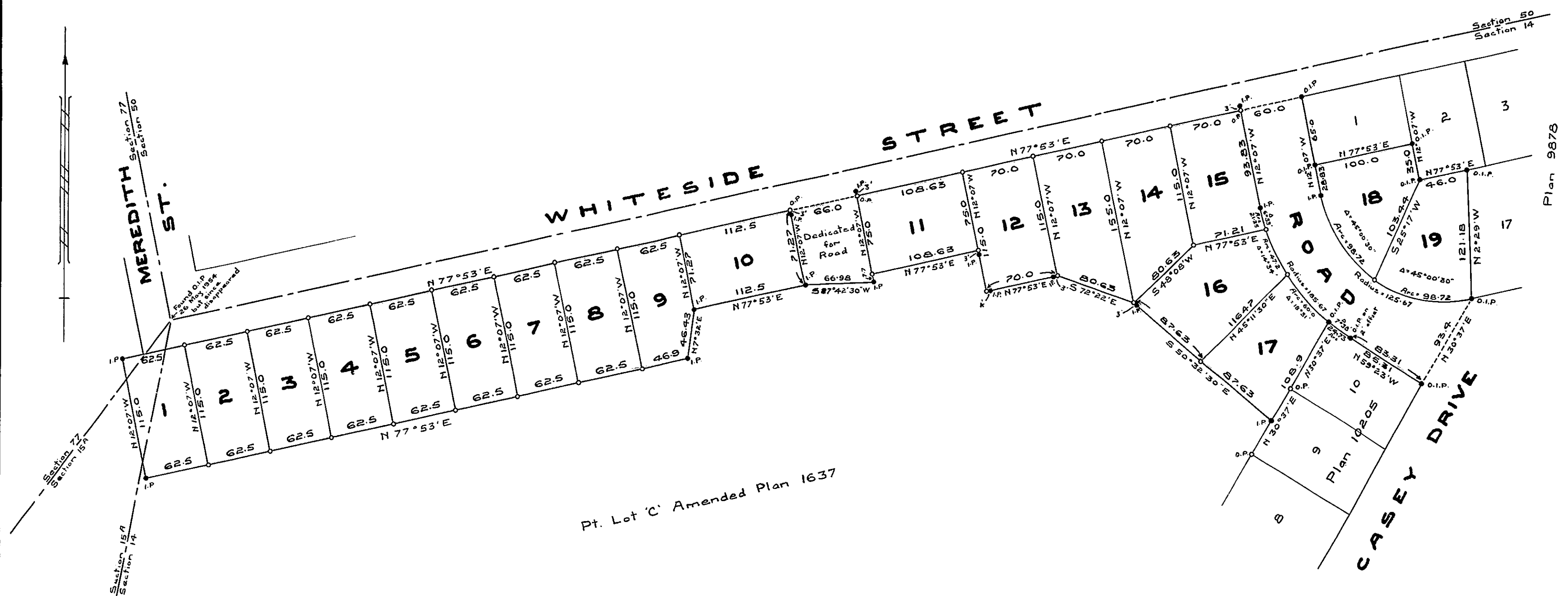
**Legend**  
 Bearings Astronomic derived from Plan 9878  
 Angles defined by durable wood posts shown thus  $\circ$   
 Angles defined by iron pins  $\bullet$   
 Old survey posts found  $\circ$   
 Old iron pins found  $\bullet$

Deposited in the Land Registry Office at Victoria, B.C. this 15<sup>th</sup> day of June 1955.

Deputy Registrar

Approved under the Land Registry Act this 12<sup>th</sup> day of June 1955.

Approving Officer for the Corpn. of the District of Saanich



Pt. Lot 'C' Amended Plan 1637

Regd. Owner: Capital Land Developments Ltd.

Secretary

I, R. Kenneth Salmon of the City of Victoria, British Columbia Land Surveyor, make oath and say that I was present at and did personally superintend the survey represented by this plan and that the survey and plan are correct. The said survey was completed on the 28<sup>th</sup> day of May 1955.

Sworn before me this 11<sup>th</sup> day of May 1955; R. K. Salmon B.C.L.S.

A Notary Public in and for the Province of British Columbia.

F.G. Aldous, B.C. Land Surveyor, Victoria, B.C.