



604.833.7780
Kore realty

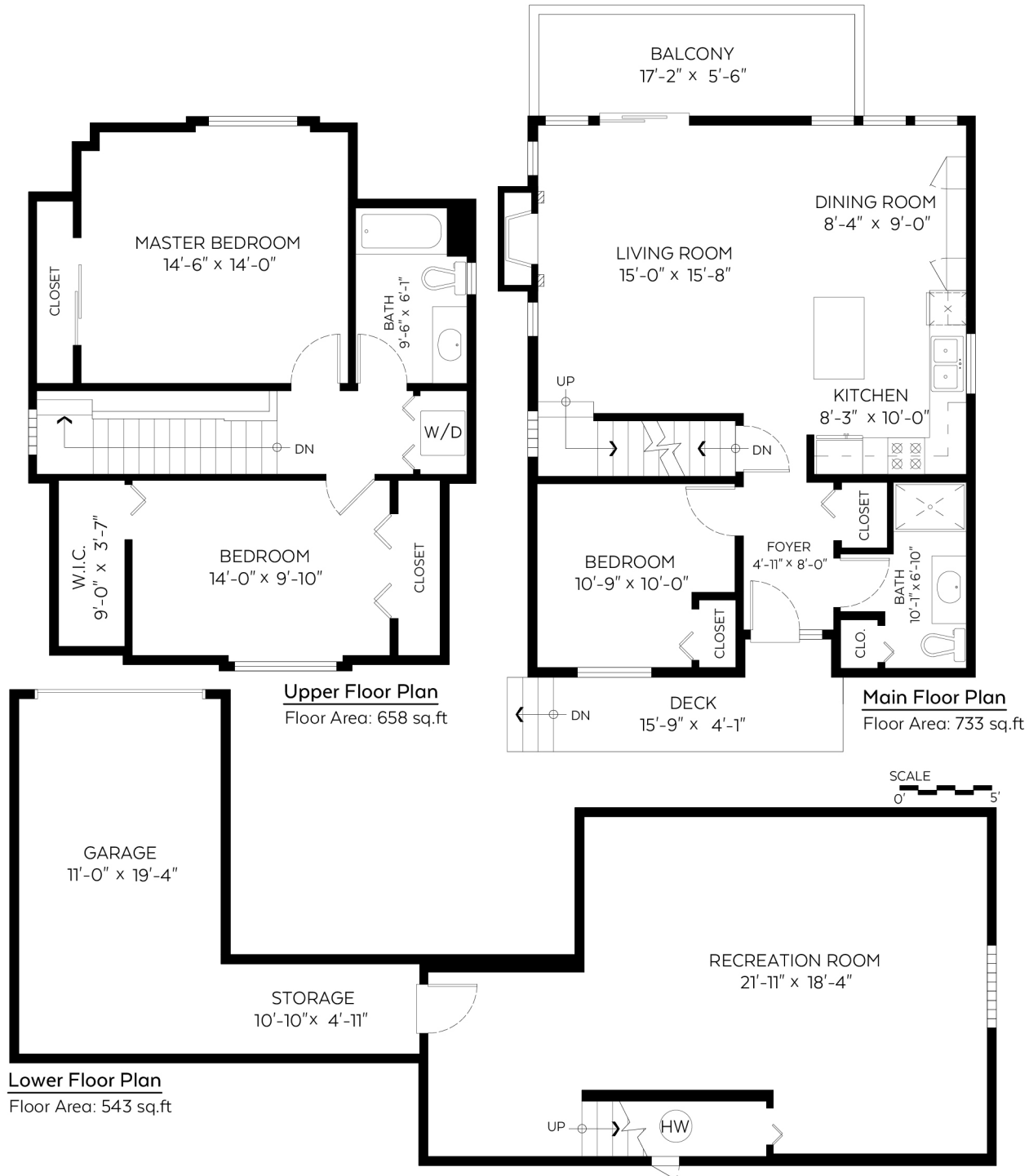
leslie@lesliegrayhomes.com
www.lesliegrayhomes.com

1086 Salisbury Drive
Vancouver, BC

Main Floor:	733 sq.ft.
Upper Floor:	658 sq.ft.
Lower Floor:	543 sq.ft.
Total:	1,934 sq.ft.

Auxiliary Area

Garage/Storage:	304 sq.ft.
Deck:	73 sq.ft.
Balcony:	110 sq.ft.



Measured on: March 20, 2018

The floor plan is not suitable for architectural/construction and is covered under E&O. © Excelsior Measuring Inc. 2018. All rights reserved for Excelsior Measuring Inc. Users shall not publish and distribute such material (in whole or in part) and/or incorporate it in other works in any form.

