



604.833.7780    leslie@lesliegrayhomes.com  
 Kore realty    www.lesliegrayhomes.com

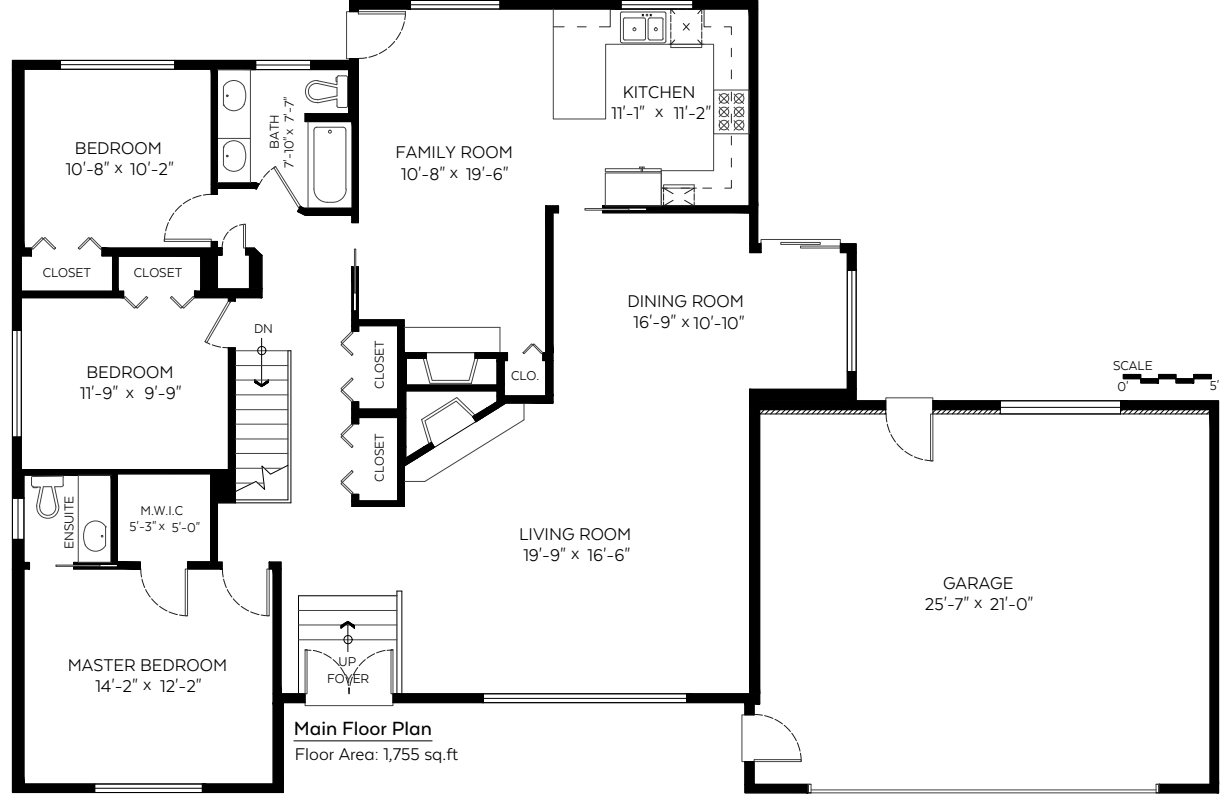
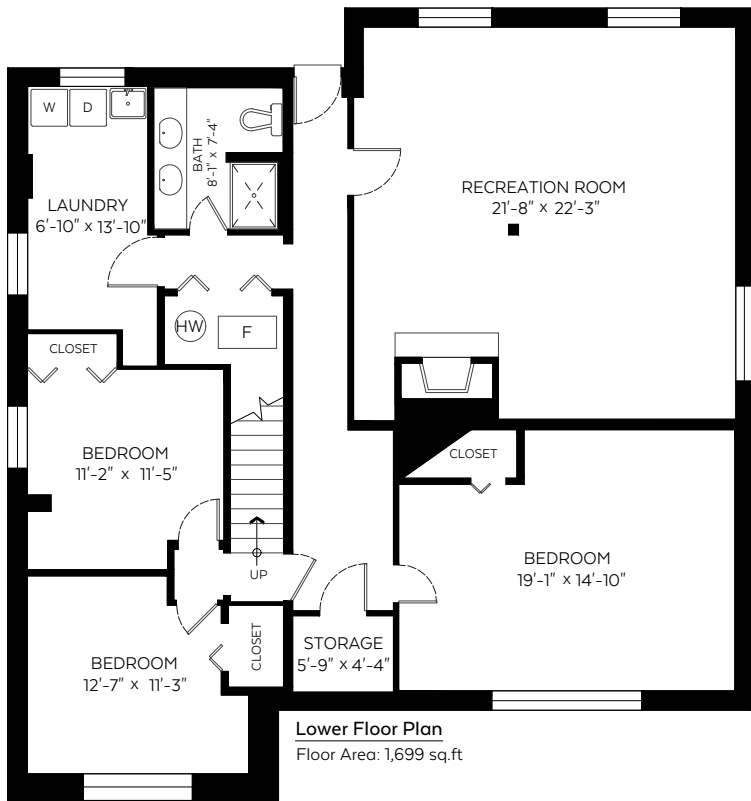
5495 Moreland Drive,  
 Burnaby, B.C.

Main Floor: 1,755 sq.ft.  
 Lower Floor: 1,699 sq.ft.

**Total: 3,454 sq.ft.**

**Auxiliary Area**

Garage: 580 sq.ft.



Measured on: Mar. 1, 2018

The floor plan is not suitable for architectural/construction and is covered under E&O. © Excelsior Measuring Inc. 2018. All rights reserved for Excelsior Measuring Inc. Users shall not publish and distribute such material (in whole or in part) and/or incorporate it in other works in any form.

