

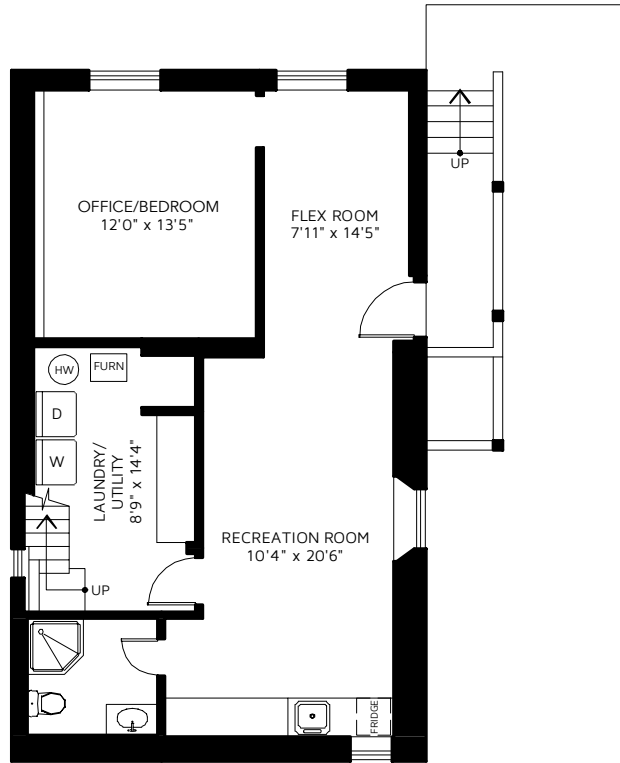
316 THIRD STREET

NEW WESTMINSTER, BC

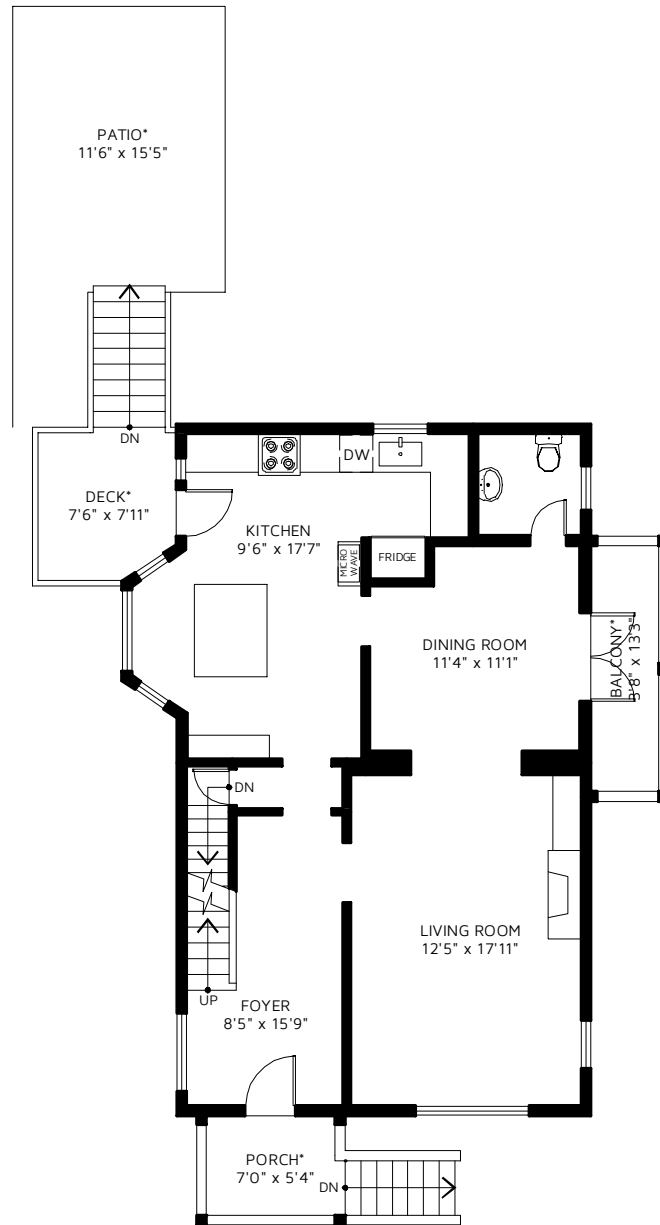
UPPER FLOOR	717 SQ FT
MAIN FLOOR	861 SQ FT
BASEMENT	838 SQ FT
TOTAL FINISHED AREA	2,416 SQ FT

PORCH*	48 SQ FT
BALCONY*	60 SQ FT
DECK*	63 SQ FT
PATIO*	177 SQ FT

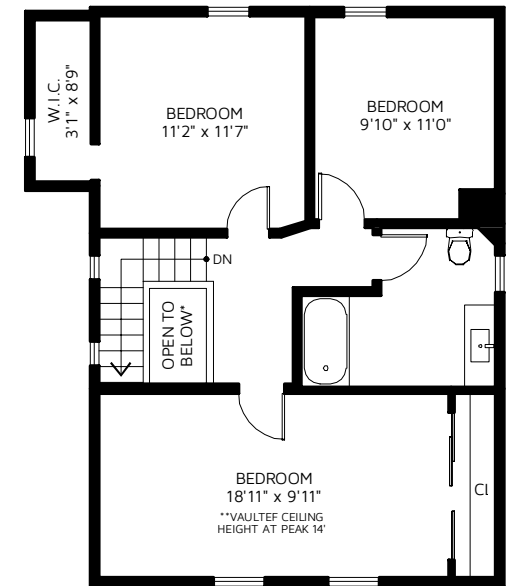
*NOT INCLUDED IN OVERALL SQUARE FOOTAGE



BASEMENT
CEILING HEIGHT 7'1"



MAIN FLOOR



UPPER FLOOR



FLOOR PLAN IS PROVIDED BY REAL MEASUREMENTS AND RENDERINGS. FOR PROMOTIONAL USE ONLY. NOT FOR ARCHITECTURAL OR CONSTRUCTION USE. AREA IS CALCULATED USING ANSI Z765 - 2003 METHOD. WHILE EVERY EFFORT IS MADE TO ENSURE THE ACCURACY, DIMENSIONS AND TOTAL AREA ARE NOT GUARANTEED. TOTAL AREA MAY INCLUDE UNFINISHED OR UNDER HEIGHT AREA. E&OE