



**LESLIE GRAY**

PERSONAL REAL ESTATE CORPORATION

**604.833.7780**

Leslie@LeslieGrayHomes.com

www.LeslieGrayHomes.com

Keller Williams Realty VanCentral 3995 Fraser Street Vancouver, BC V5V 4E5

**215 2nd St, New Westminster, BC V3L 2K5**

MAIN LEVEL: 1,402 sq.ft.

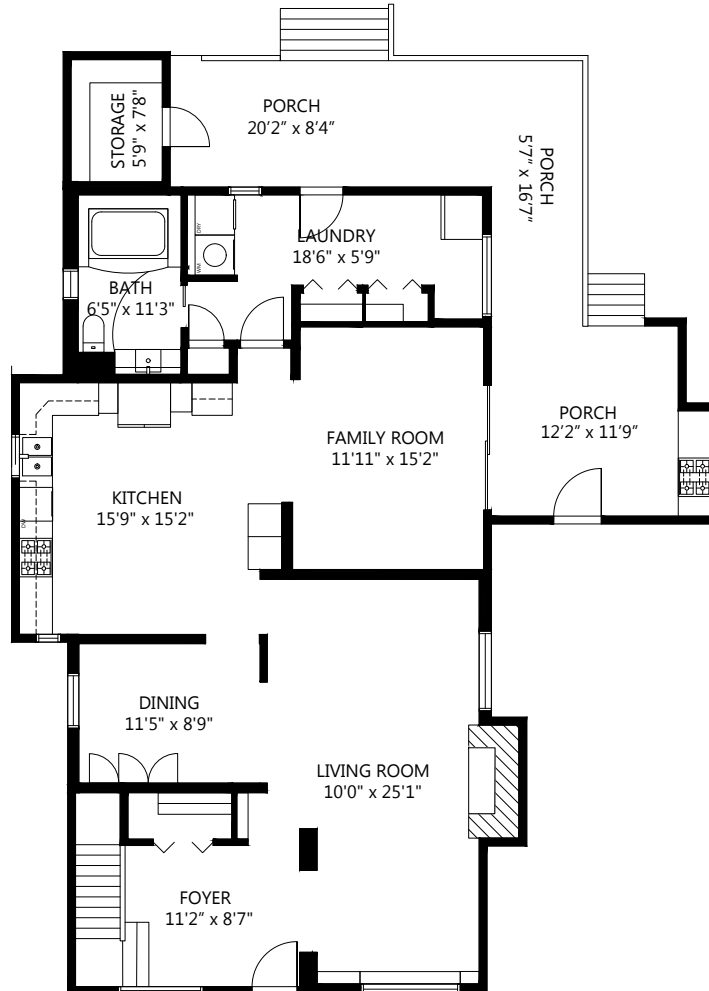
UPPER LEVEL: 1,309 sq.ft.

**TOTAL AREA: 2,711 sq.ft.**

**Auxiliary Areas:**

PORCH: 405 sq.ft.

DECK: 186sq.ft.

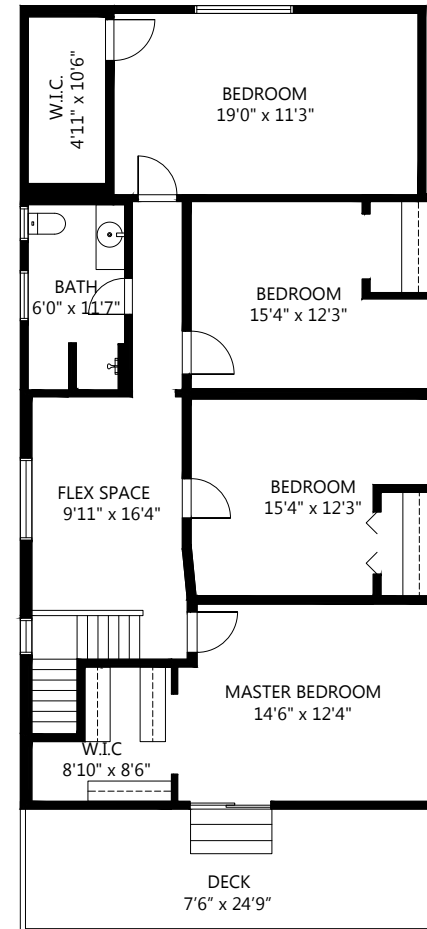


**MAIN LEVEL:**

1,402 sq.ft.

CEILING HEIGHT: 7'10" - 9'5"

PORCH: 405 SQ.FT.



**UPPER LEVEL:**

1,317 sq.ft.

CEILING HEIGHT: 7'10"

DECK: 186 SQ.FT.

**215 2nd St, New Westminster, BC V3L 2K5**

Floor plans are intended to give a general indication of the proposed layout only. All images and dimensions are not intended to form part any contract or warranty. This announcement is not intended to solicit or induce breach of an existing agency agreement.