

**4542 Napier Street,  
Burnaby, B.C.**

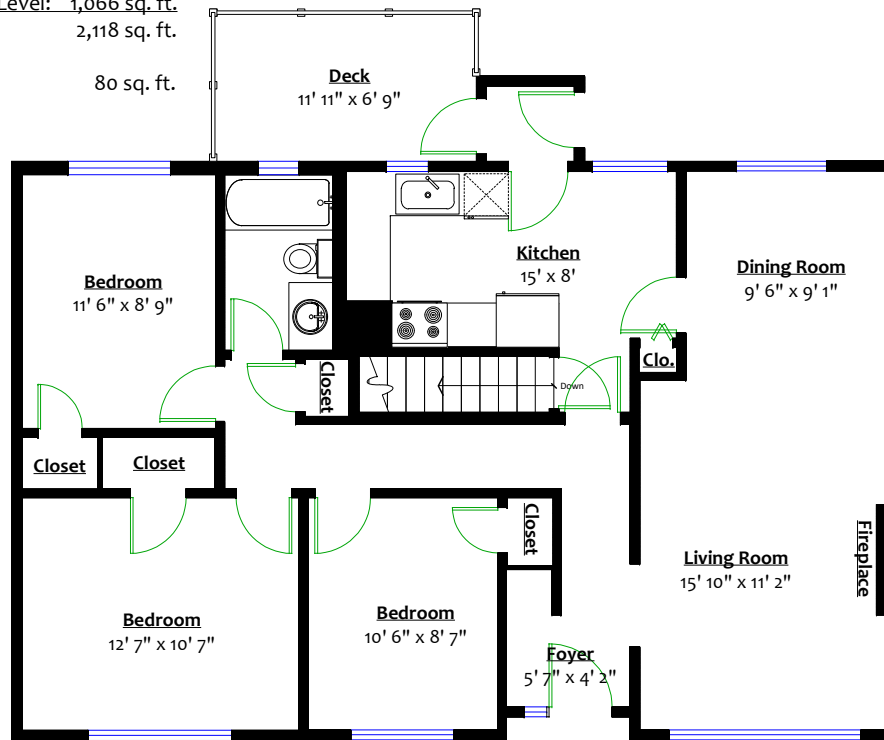
**Totals\*\***

Main Level: 1,052 sq. ft.

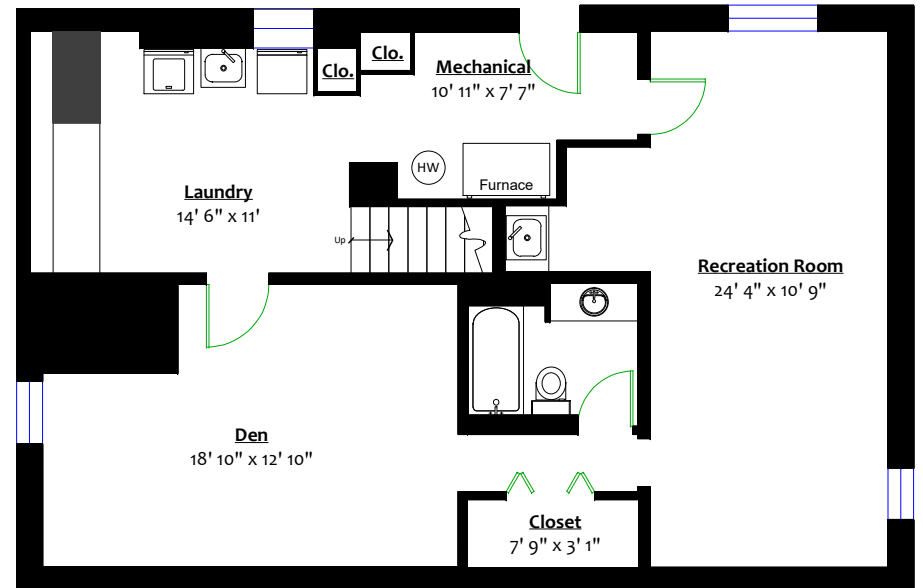
Lower Level: 1,066 sq. ft.

Total: 2,118 sq. ft.

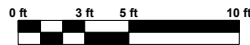
Deck: 80 sq. ft.



**MAIN LEVEL**  
Floor Area: 1,052 Sq. Ft.



**LOWER LEVEL**  
Floor Area: 1,066 Sq. Ft.



\*\* Approx. based on interior measurements to exterior walls  
\*\* Total square footage not taken from original blueprints