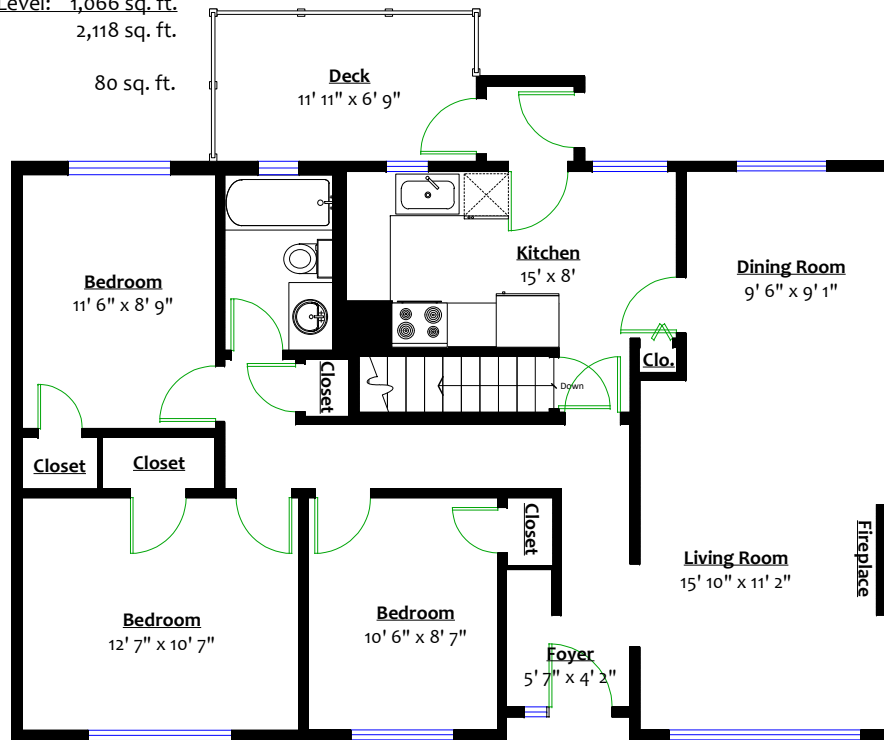


**4542 Napier Street,
Burnaby, B.C.**

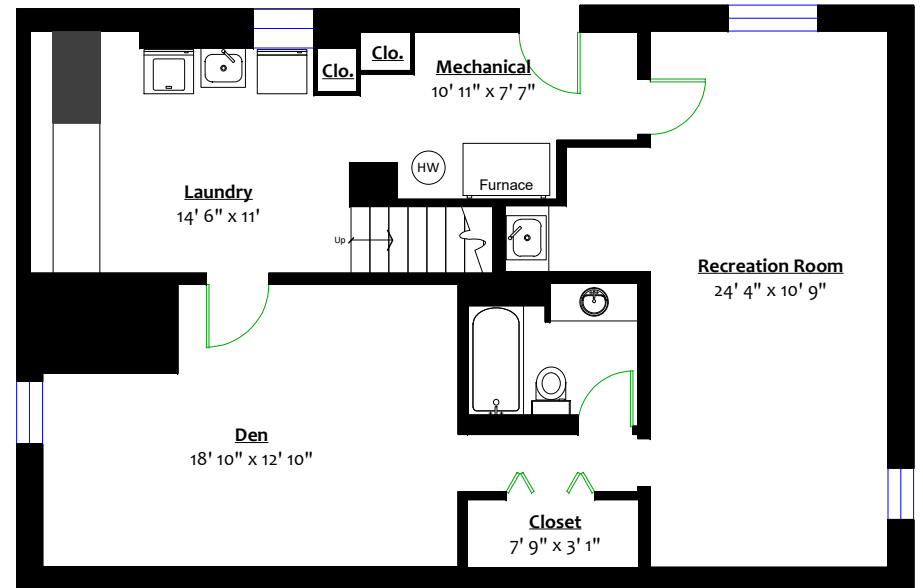
Totals**
 Main Level: 1,052 sq. ft.
 Lower Level: 1,066 sq. ft.
 Total: 2,118 sq. ft.
 Deck: 80 sq. ft.

DAVE MASSON
 YOUR REAL ESTATE SPECIALIST

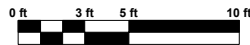
778.855.8510



MAIN LEVEL
 Floor Area: 1,052 Sq. Ft.



LOWER LEVEL
 Floor Area: 1,066 Sq. Ft.



** Approx. based on interior measurements to exterior walls
 ** Total square footage not taken from original blueprints