



# 1108-2733 CHANDLERY PLACE

2 BED | 2 BATH | 841 SQ. FT.

FRASER RIVER VIEWS! Well laid out 2 bedroom, 2 bathroom (1 ensuite) condo with spectacular unobstructed views of the Fraser River just minutes away from all the new River District amenities as well as the waterfront walkway. Upgrades include new floors, bathrooms, kitchen, appliances, and more. This unit also features a gas fireplace, in suite laundry, 2 parking stalls and 1 storage locker. Common party room and fully equipped gym in the building. Pets allowed (1 cat/1 dog).

## NEIGHBOURHOOD HIGHLIGHTS

### Elementary School

David Oppenheimer Elementary

### High School

David Thompson Secondary

### French Immersion

Laura Secord Elementary

Sir Winston Churchill Secondary

**WALK SCORE:** 23

**BIKE SCORE:** 38

**TRANSIT SCORE:** 49

Keith Roy  
AND ASSOCIATES

604-210-2933  
team@KeithRoy.com  
KeithRoy.com



RE/MAX



KEITH ROY, PREC\*



GREG DENT



GREGORY ANDRUFF, PREC\*



TARYN LEES



SARAH HOPKINS



EMMA HAMEL

# 1108-2733 CHANDLERY PLACE

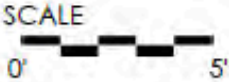
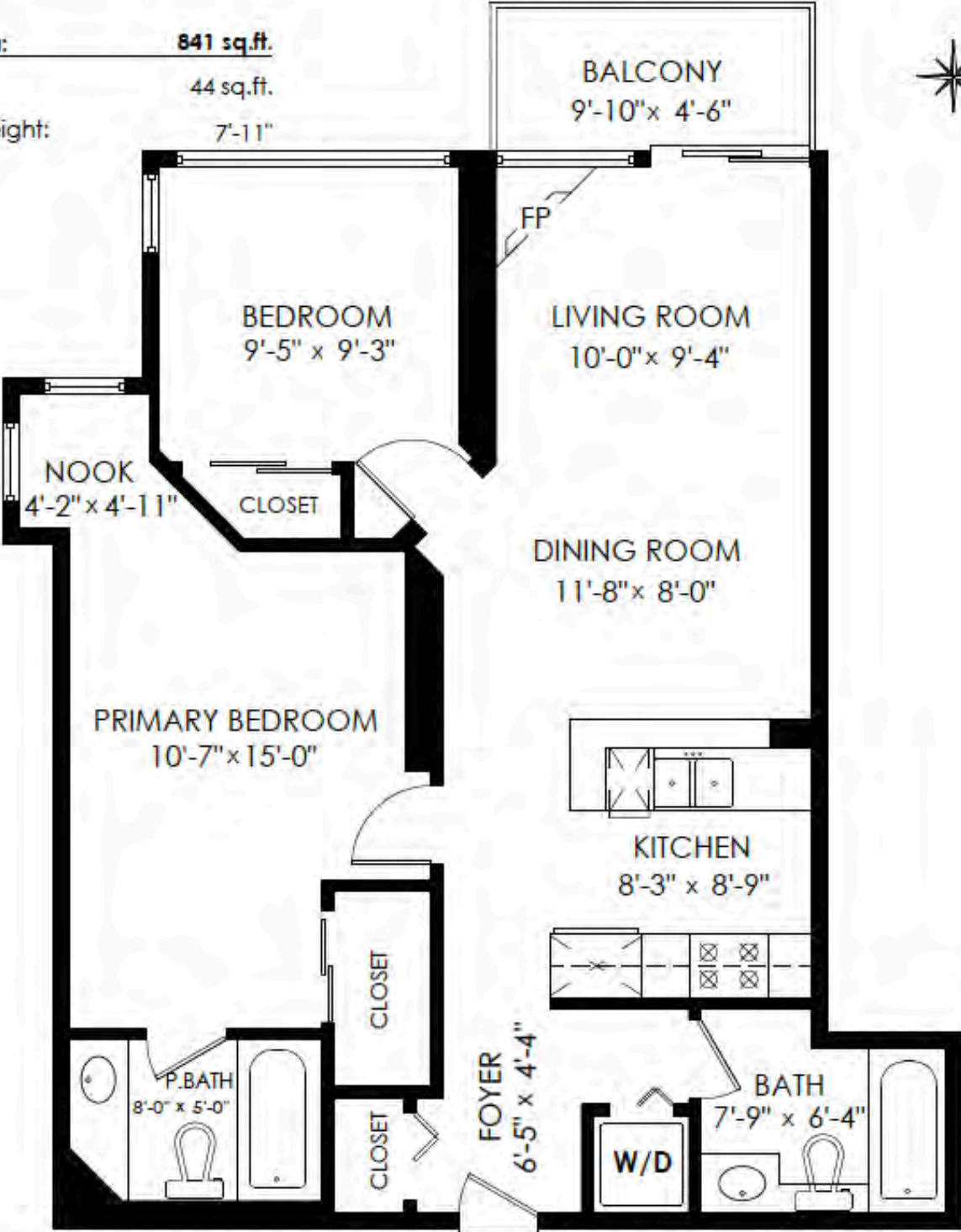
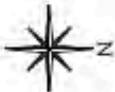
2 BED | 2 BATH | 841 SQ. FT.



View additional photos & 3D tour at [www.KeithRoy.com](http://www.KeithRoy.com)

**1108-2733 Chandlery Pl  
Vancouver**

**Floor Area:** 841 sq.ft.  
Balcony: 44 sq.ft.  
Ceiling Height: 7'-11"



MEASURED ON: (2024-01-08)

info@pixlworks.com www.pixlworks.com 604.329.5788



\*FAC Inset: Total square foot calculated to gross unit area. SQFT based on interior measurements to exterior walls, not taken from original blueprints, may include unfinished area. This is for marketing purposes only and is not intended for architectural/construction use. All details, sizes & placements should be considered approximate within +/- 2% tolerance.

