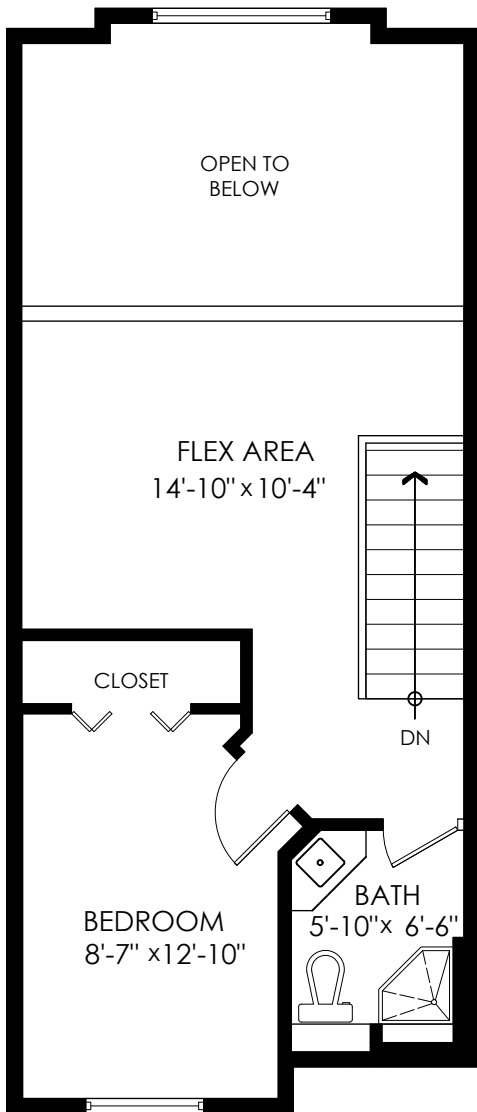


Main Floor: 579 sq.ft.
 Upper Floor: 436 sq.ft.
 Lower Floor: 546 sq.ft.
Total Livable: 1,561 sq.ft.

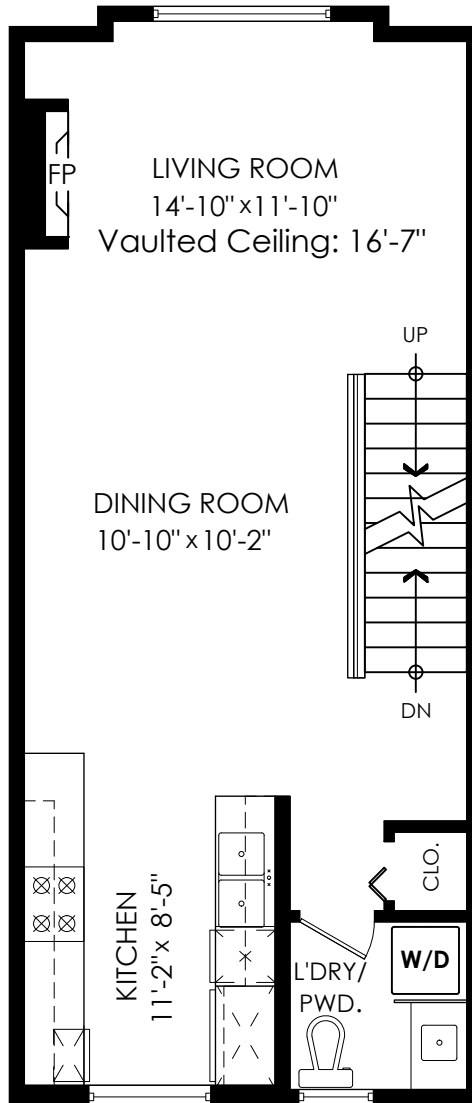
Balcony: 86 sq.ft.
 Porch: 19 sq.ft.
Total Extras: 105 sq.ft.

Open To Below: 137 sq.ft.



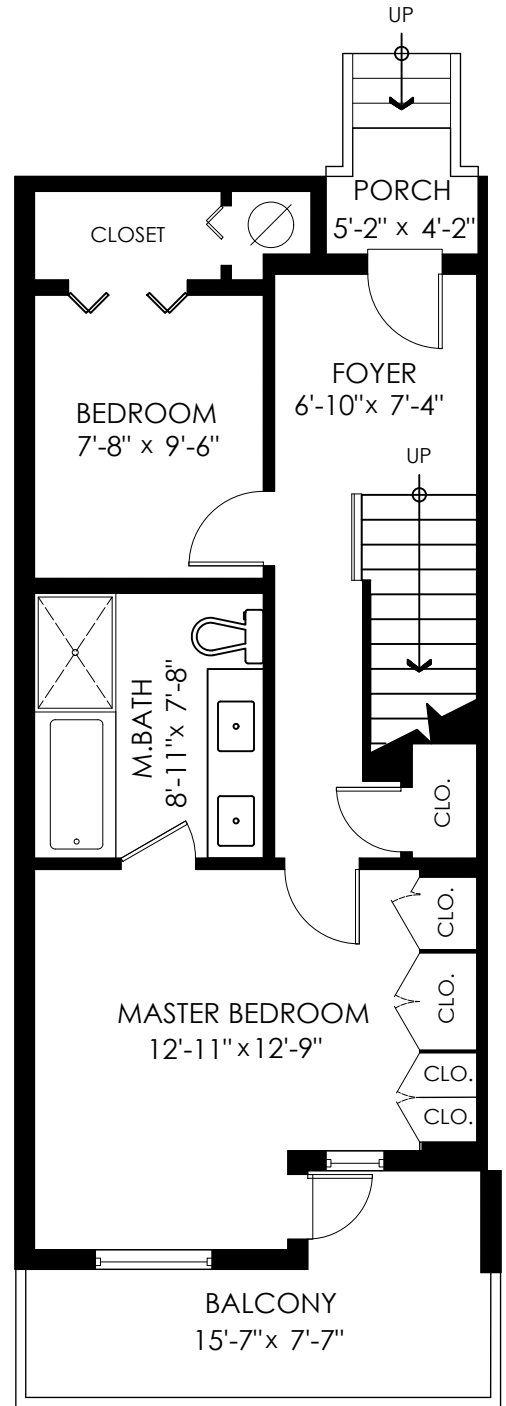
Upper Floor Plan

Floor Area: 436 sq.ft.
 Ceiling Height: 8'



Main Floor Plan

Floor Area: 579 sq.ft.
 Ceiling Height: 8'



Lower Floor Plan

Floor Area: 546 sq.ft.
 Ceiling Height: 8'

