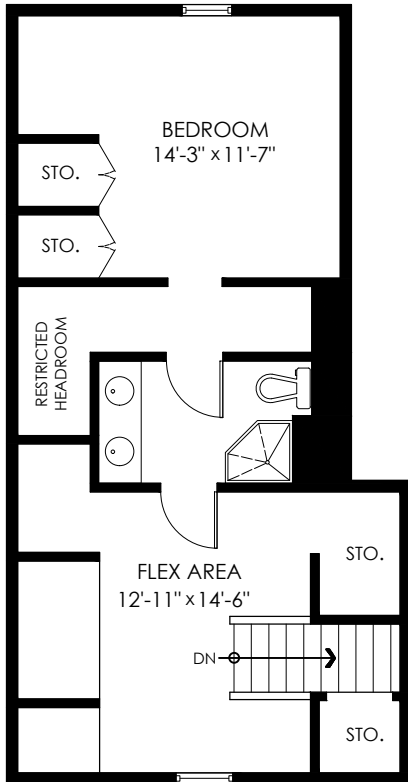


Main Floor: 904 sq.ft.  
Upper Floor: 536 sq.ft.  
Lower Floor: 1,062 sq.ft.  
**Total Livable: 2,502 sq.ft.**

Restricted Headroom: 24 sq.ft.  
**Grand Total: 2,526 sq.ft.**

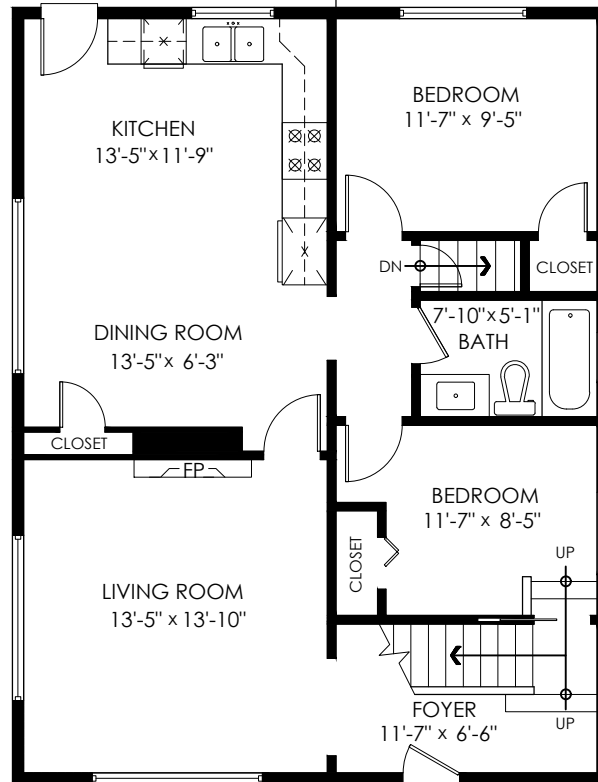
Deck: 201 sq.ft.

DECK  
22'-4" x 9'-0"



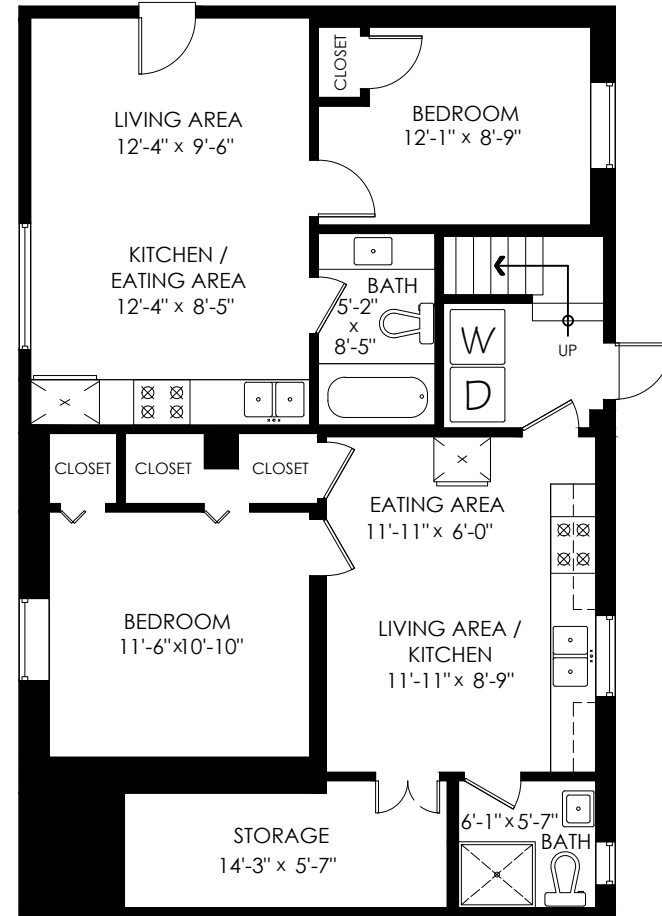
**Upper Floor Plan**

Floor Area: 536 sq.ft.  
Ceiling Height: 6'-10"



**Main Floor Plan**

Floor Area: 904 sq.ft.  
Ceiling Height: 8'-4"



**Lower Floor Plan**

Floor Area: 1062 sq.ft.  
Ceiling Height: 7'-0"



E&O Insured. Total square foot calculated to gross unit area. SQFT based on interior measurements to exterior walls, not taken from original blueprints, may include unfinished area. This is for marketing purposes only and is not intended for architectural/construction use. All details, sizes & placements should be considered approximate within +/- 2% tolerance.

MEASURED ON: (2022-05-26)  
info@pixlworks.com www.pixlworks.com 604.329.5788

