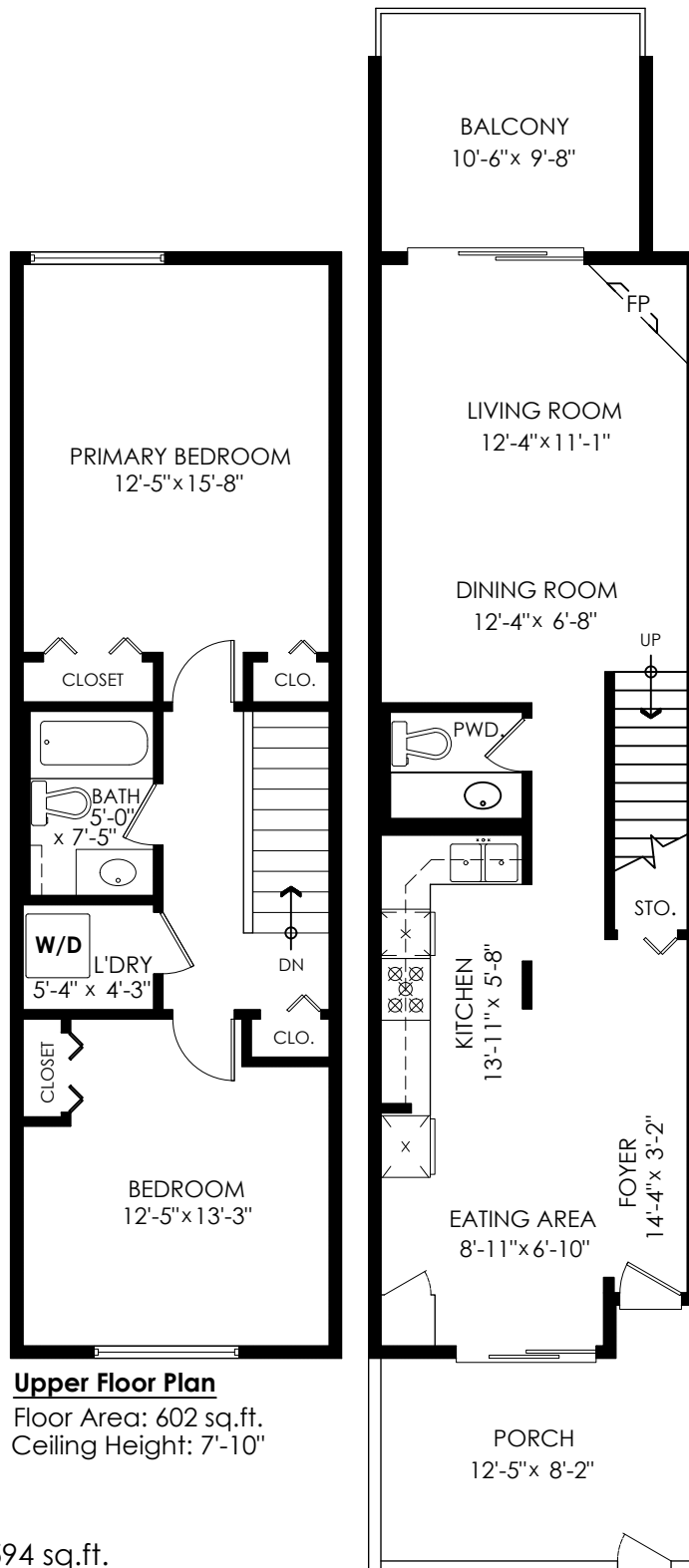


103-7891 No 1 Rd Richmond



Upper Floor Plan

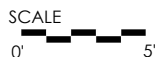
Floor Area: 602 sq.ft.
Ceiling Height: 7'-10"

Main Floor Plan

Floor Area: 594 sq.ft.
Ceiling Height: 7'-10"

Main Floor: 594 sq.ft.
Upper Floor: 602 sq.ft.
Total Livable: 1,196 sq.ft.

Balcony: 102 sq.ft.
Porch: 110 sq.ft.
Total Extras: 212 sq.ft.



MEASURED ON: (2023-03-01)

info@pixlworks.com www.pixlworks.com 604.329.5788



E&O Insured. Total square foot calculated to gross unit area. SQFT based on interior measurements to exterior walls, not taken from original blueprints, may include unfinished area. This is for marketing purposes only and is not intended for architectural/construction use. All details, sizes & placements should be considered approximate within +/- 2% tolerance.