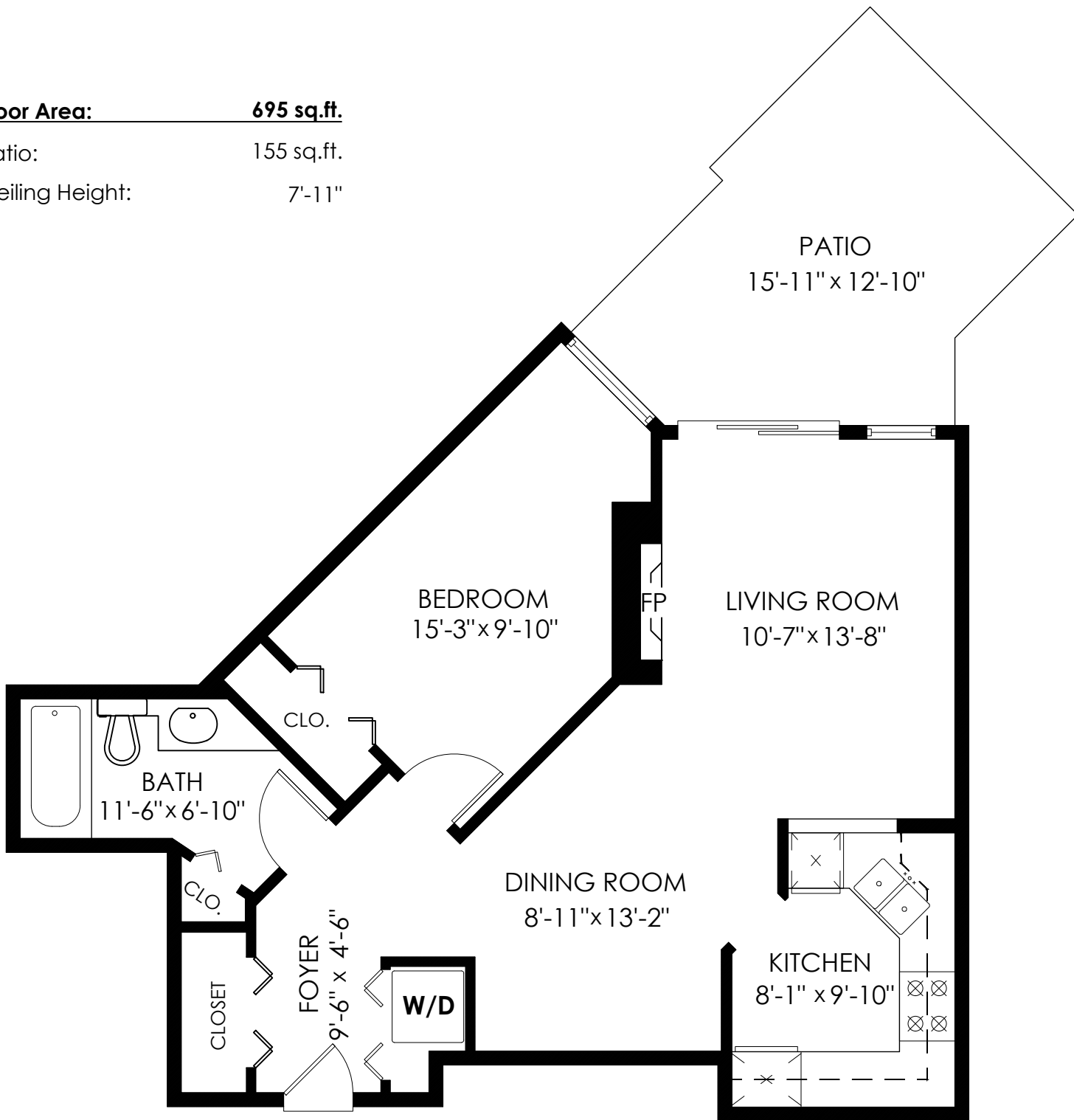


# 114-3770 Manor St Burnaby

**Floor Area:** 695 sq.ft.

Patio: 155 sq.ft.

Ceiling Height: 7'-11"



MEASURED ON: (2023-09-11)

info@pixlworks.com www.pixlworks.com 604.329.5788



E&O Insured. Total square foot calculated to gross unit area. SQFT based on interior measurements to exterior walls, not taken from original blueprints, may include unfinished area. This is for marketing purposes only and is not intended for architectural/construction use. All details, sizes & placements should be considered approximate within +/- 2% tolerance.